

Whitworth

VALLEY NEWS



PRODUCED BY
Whitworth
Town Council

Local news

UPDATES FROM
COMMUNITY
GROUPS

Business listings



15 - 23 JUNE

**full schedule
inside**

**Whitworth gets
IN BLOOM**



**WHITWORTH
SKYLINE**

Sunday 12th May

WHITWORTH FAMILY COMPANY



THE CARPET & FLOORING DEPOT

Carpets, Vinyls, Laminates,
Designer Flooring & Remnants
ALL AT DISCOUNT PRICES



STOCKISTS OF ALL LEADING CARPET AND VINYL MANUFACTURERS

HUNDREDS OF ROLLS IN STOCK

FREE: LOCAL DELIVERY - PLANNING AND MEASURING SERVICE

PROFESSIONAL FITTING SERVICE AVAILABLE

01706 656466

48 WHITEHALL STREET, ROCHDALE. OL12 0LN

FAMILY RUN WITH FAMILY VALUES

Doggy Styles



07377631116

717 Market St
Facit,
Whitworth
OL12 8LD
Contact Becky



OUR SERVICES

Bath and
Brush
Bathing and
Drying
Styling
Ear & Eye
Cleaning
Puppy
Introduction
No crate
option
Nail Clipping
XXL Breeds
Welcome
Grooming
products
And much
more...
Call for more
info



Freshly made sandwiches,
panini's, homemade pies, cakes,
beverages and more served
with a smile. Open 7 days!

Eat in or takeaway.



Telephone orders welcome



T.01706 853311



597 Market Street,
Whitworth, Rochdale OL12 8QS



PDB Electrical

Over 30 years' experience

Maintenance
Installation
PAT Testing
Home or Business
Telephones
Full Rewires
Computer Repairs
Part P approved through ELECSA



Pete Barnes

Office: 01706 860840

Mobile: 07740 825536

Email: pdbelectrical@yahoo.co.uk

MESSAGE FROM THE MAYOR ELECT



Dear residents and readers

On 16th May, I will officially become the Mayor of Whitworth until May 2020. The Mayor Making takes place at the Riverside at 7.30pm and I would like to welcome you all to attend. It is a short meeting followed by refreshments. This will be the second time I will be Mayor, I was first elected to the office of Mayor in 2015.

I will be ably assisted in the role by my husband, David (who has himself served as Mayor before), daughter Vickie and granddaughter, Charlotte. As the Mayor, I will be attending all manner of events and initiatives in Whitworth and acting as an ambassador for our town at events outside Whitworth. I will chair the Town Council's full council meetings and will be a figurehead for the town. I also intend to raise money for the Mayor of Whitworth's Charity Fund through a variety of initiatives. During my year in office, my primary focus will be on the town's youth and other organisations that benefit the people of Whitworth. Any funds I manage to raise will be donated to support them in their endeavours.

My official engagements start straight away with the diary filling up fast already, please contact the clerk (details at the back) if you would like to invite me along to your event.

I have lots of events in the pipeline that you are all invited along to starting with Civic Sunday on 9th June, a charity event on 19th October and civic dinner on the 4th April 2020. Look out for more details of these in future editions.

With all best wishes

A handwritten signature in black ink that reads "L. J. Barnes".

Councillor Lynda Barnes, Mayor Elect of Whitworth

Some dates for your diary...

Mayor-making

Thurs 16th May

7.30 pm

The Riverside

Civic Sunday

Sun 9th June

2.30 pm St Bartholomew's

(no procession)

Mayoral Charity

Fundraiser

Sat 19th October

The Riverside

Civic Dinner

Sat 4th April 2020



Whitworth
Town Council

WHITWORTH, LOVE WHERE YOU LIVE

WHITWORTH IN BLOOM

This year, for the first time, Whitworth is entering the North West in Bloom competition. It aims to encourage communities to improve their local environment through imaginative planting of trees, shrubs, flowers and landscaping, conservation and recycling projects and to eliminate eyesores that blight our streets such as litter, graffiti and vandalism. By taking part in the competition we are hoping to increase the feeling of civic pride and start the ball rolling on a long-term plan to improve the local environment.

To launch 'Whitworth in Bloom', we are going to have a local competition where residents can enter their own gardens and green spaces. There will be extra points for displays that are visible from the road, innovation (for example where there is no green space but you manage to create some with window boxes and hanging baskets), sustainability (thinking about plants that need less watering and maintenance), environmentally conscious (recycled materials and planting wildlife friendly plants and pollinators) and being wise with water (where you have managed to incorporate some kind of rainwater harvesting into your design).

To enter, return the entry form along with some photographs to the council office by Monday 17th June. A shortlist will be visited and judged from Monday 24th June and winners will be announced at the Family Fun Day on 7th July!

This competition should get us ready for the official North West in Bloom judges to come and judge the town at some point in July. In preparation for the competition we are doing some clean up work wherever possible. We have been spring cleaning litterbins and road signs.

We really want to thank the members of our community who have already been making Whitworth look its blooming best for years. The horticultural society look after the memorial gardens and the bowling green in addition to the planters at the Riverside, read more about their work on page 7. Linda, has been working hard maintaining this planter on Union Street for years and keeping it looking marvellous since Rossendale Borough Council stopped tending to it. There are several spots in Whitworth that are looking a bit neglected, maybe we can help you bring it back to life like Linda has done at Union Street?

The Allotment Working Group volunteers each maintain a planter located by the side of the road, they really help to bring a bit of colour to the town.

Glen, our Caretaker, picks up the town's litter and we know from when he takes his annual leave what the town would look like without his input. Keep Whitworth Tidy have regular litter picks and make such a difference to our community, why not go along, they are a friendly bunch and it is amazing what you can achieve in just an hour! www.facebook.com/groups/1653203138232817/

For more details or to get involved contact Melanie on 01706 852018, email info@whitworth.gov.uk or get in contact through the facebook page www.facebook.com/Whitworth-In-Bloom-638234949960755/



Whitworth in Bloom Garden Competition 2019

Your name:

Your address (incl. postcode):

Your contact tel no.

Your email address:

Tell us a little bit about your garden or display, especially about features which will gain you extra points such as innovation, sustainability, eco-friendly and saving water:

Location of your display (if not obvious from the front of the property) incl. postcode:

Terms and Conditions: 1. This competition is open to residents, business' and community groups 2. You can enter any part of your garden or outside of your property as long as it is within the Whitworth boundary 3. All entries must be received by 12 noon on Monday 17th June 2019. Any entries received after this date will not be entered. 4. A shortlist will be drawn up from the photographs and judges will visit the shortlisted entries from Monday 24th July 5. The winners will be announced at the Family Fun Day on Sunday 7th July. A list of the winners will also be available from Whitworth Town Council after this date. 6. If photographs contain people they must be aware they have been photographed and happy for their images to be shared. Photographs will be shared on websites and social media. 7. Your address and contact details are for the organiser's use only and will not be shared. The names and photographs of entries may be shared in local press, on social; media and websites. 8. Entry forms must be completed by a person over 18 years of age.

Return this form along with up to 5 photographs to Council Offices, Civic Hall, Market Street, Whitworth OL12 8DP or email info@whitworth.gov.uk by 12 noon Monday 17 June

Whitworth Leisure Centre

GP referrals
Aqua Thai Chi
Fitness Centre
Aqua Fit
50+ swim
Junior Gym

Early Morning Swim
Pool temp at 30 °C
Cafe area incl refreshments

01706 852694

e: contact@whitworthleisure.co.uk

www.whitworthleisure.co.uk

John Street, Whitworth, OL12 8BT



Whitworth Travel

Travel in Style

- 24 / 7 with advanced booking
- Meet and greet
- Free waiting time so no need to worry if your flight is delayed
- Flight tracking
- Fully air conditioned
- Male and female drivers
- Cars and 8 seater minibus
- Reliable, friendly and efficient service

Tel: 01706 854 324

Mob: 07413 467 486

www.whitworthtravel.com

Visit us online www.sduk ltd.com

 **suitedreams**
Quality Furniture Affordable Prices
Quarry Mill, Whitworth Rd, Rochdale, Lancashire, OL12 0SN



Wing Back Chair

Our Price £249.00

Single Beds

From £79.00



Fabric Suites

From £299.00



We offer our best PRICES

ALL YEAR ROUND!

Telephone 01706 718222

WHITWORTH DOUBLE GLAZING REPAIRS

ALL FOGGED UP?

DRAFTS?

**LOCKS & HANDLES
HINGES**

**ANY DOUBLE GLAZING
PROBLEM SOLVED
NO VAT**

**30 YEARS EXPERIENCE
JUST CONTACT RICHARD**

07768 243081

VILLAGE CARS OF WHITWORTH



**No call out charge
after midnight**

01706 854545

07592 953822

LANCASHIRE LAW



We are delighted to announce our latest offers at the Whitworth office until the Autumn edition of the Valley News!

We are currently offering £100.00 discount on all non-contentious divorces. Our fees for a non-contentious divorce are now £450.00 plus VAT.

We are also offering 20% off the cost of making an initial C100 application, again until the Autumn Edition of the Magazine! A C100 application is used to apply to court for orders relating to children, including with whom they will live with. Please note that our fees remain the same for all legal work following the C100 application being issued at court. For full details of fees please contact us.

If you would like to book an appointment, please contact the office on 01706 854167.

We look forward to hearing from you!

tel: 01706 854167

email: kim.march@lancslaw.co.uk

501 Market St., Whitworth, Lancashire, OL12 8QN

This firm is regulated by the Solicitors Regulation Authority.
Access to the Authority's rules can be found by visiting www.guide.law.society.org.uk

STAYING STEADY ON YOUR FEET!

Summer is almost here and no doubt you feel a spring in your step! But for some, falls take away this confidence and cause one to be less active due to fear of falling.

At the AB&D centre class, the focus is on strengthening weak muscles in **practical** movements aimed at fall prevention. They include; gentle yet cardiovascular exercise, coordination and balance routines a focus spot for problem areas like the neck, back and knees, improving flexibility with strength resistance for upper and lower body, sit to stand, stretch and cool down. To keep the class fresh and fun a varied approach is taken.

Inactivity promotes degenerative diseases, if you have diseases such as diabetes type 2 already, exercise can improve symptoms. Please come along and Just Move! To Improve.

If fall prevention is your goal as well as keeping fit in other fitness categories, join in on Mondays from 1.45-2.45pm (except bank holidays) at the AB&D centre, Burnley Road, Bacup, OL13 8EU

For further information or if you manage a nursing home or sheltered housing and would like exercise for your residents **please contact Rosemary on 07886 963024.**



The **Gallery at the Baths** this week will open a new exhibition, featuring artwork by the pupils of St Bartholomew's School. Displays to follow are:

May 31	Whitworth Sports Festival Retrospective
June 14	St John with St Michael's School
June 28	Whitworth Sports Festival 2019
July 19	Family Fun Day
August 9	Whitworth Valley FC

GAB's little sister **Gallery at the Library** will feature work by Whitworth Choir and Whitworth Horticultural Society

May 31	St Bartholomew's School
June 28	St John with St Michael's School
July 19	Whitworth Sports Festival 2019
August 9	Family Fun Day

WHITWORTH AND HEALEY HORTICULTURAL SOCIETY

By the time you read this, the volunteers will have been busy preparing the Memorial Gardens and other communal areas in Whitworth to make them ready for everyone to enjoy during the coming months. If you would like to see what the volunteers have accomplished, visit Whitworth Library where an exhibition of photos covering their work will be on display until May 31. If that inspires you to volunteer, please contact either Anita 853768 on or Chris on 852613.



WHITWORTH SPORTS FESTIVAL begins Saturday June 15. Do, please, come along and enjoy yourself at the opening Sports Day at Whitworth Valley – first race 1.30, events for all the family, refreshments: simply a chance to have a bit of sporting fun. The full Festival schedule is on the middle pages of this WVN. Any volunteers to marshal at the two fell races and the Splash&Dash?

CELEBRATING A YEAR OF SUCCESS

The Red Box Project Rossendale was set up by Samara Barnes a year ago to alleviate period poverty in the borough.

It works entirely through the kindness of the community. People are asked to make donations of menstrual products, which are then delivered to schools to ensure no girl has to miss education due to period poverty. Underwear, information packs, posters and hygiene items are provided too.

Whitworth has embraced the project wholeheartedly. The Women of Whitworth Project, led by Kimberley Ashworth held a Tea and Tampon event which saw over 250 items donated and the Friends of Whitworth Library very kindly donated Primark vouchers too.

Donation points can be found at The Riverside, Whitworth Medical Centre and Whitworth Library. These donation points, along with others across Rossendale allow boxes of products and continuous supplies to be provided to Whitworth High School and all 3 primary schools in the town.

Recent news from the Treasury to provide free menstrual items to high schools, colleges and primary schools has been extremely well received, however The Red Box Project Rossendale will continue to collect donations until this initiative starts in 2020.



30TH ANNIVERSARY CELEBRATIONS

Riddiough Court, retirement housing is celebrating the 30th anniversary of its opening.

Residents and staff are hosting two events free of charge and invite all residents of Whitworth to join the celebrations.

The first event will be held in the communal lounge of Riddiough Court at 7.00 p.m. Wednesday 24th July 2019. Whitworth Historical Society will present a film show and talk on the history of Whitworth. Tea and biscuits will be served. Seats for this event are limited, therefore it is advisable to reserve a seat by contacting: Manager, Margaret Denniff on tel: 0370 192 4773.

The finale is a garden party on Saturday 27th July 1.30pm. – 6.00pm.

Entertainment will be provided along with music by Whitworth Vale and Healey Brass Band. Light refreshments will be served.

Housing(21)

Riddiough Court, Hall Street, Whitworth.

Andy O'Sullivan MBE and Andems Runners raised £25,000 for very worthy causes by staging a series of Races at Cowm Reservoir. The beneficiaries included Mollie Campbell, Whitworth's Commonwealth silver medallist.

Andy would like to thank Emily O'Sullivan, Colin & Brenda Robinson, Billy, Ken & Eileen, The Company Shop, Morrison's and UK Timers - without their support the races would not have been possible. Also thanks to Sandra and her marshals, Julie, Hazel and the staff at the Cock and Magpie. There are a host of races planned for 2019.



Andy with staff from Morrison's
Bacup presenting the cheque

RT FENCING
MANUFACTURERS & SUPPLIERS ROCHDALE



REAR OF 307a MARKET STREET, WHITWORTH
You will find us opposite Basils Restaurant

Tel: 01706 650 829
Mob: (Robert): 07966 846 638

www.rtfencing.co.uk



SAMBA DANCE AND FITNESS

Freestyle / Disco
Street / Hip Hop
Latin American
Ballet & Tap
Ballroom
Cheerleading
Breakdance
Drama

613 Market Street,
Whitworth, OL12 8DY
☎ 01706 854960

www.sambadanceandfitness.co.uk

- Private Lessons
- Competitions & Exams
- or Just for Fun



High Power Pressure Washing

Path pavings cleaned
Patio cleaning
Driveways & Tarmac
Decking & Cobbles
Graffiti removal
Garden stone walls
Moss & algae removal

Eco-friendly chemicals used in all cleaning procedures




Contact Sean on 0773 798078

STEVE PARKERS Ltd

INDEPENDENT SERVICING SPECIALISTS FOR LAND ROVERS



REPAIRS, SPARES, & ACCESSORIES,
PARTS COUNTER & ONLINE SHOP
www.steveparkers.com
LLOYD ST, WHITWORTH, ROCHDALE,
OL12 8AA
TEL 01706 854222
PRESS 1 - PARTS, PRESS 2 - SERVICE
OVER 30 YEARS IN BUSINESS

Marc Priestley Handyman

General Maintenance

UPVC Cleaning

Garage Roof Replacements

Painting

Roofing Repairs and Guttering

Fencing

Flatpack Furniture Assembly

Roof Moss Removal

All other handyman jobs welcome

Fully insured and guaranteed

01706 648315 07801 428478

marc.priestley227@gmail.com

Rose 'n' Bowl
264 Newchurch Rd, Stacksteads, Bacup, OL13 0UG
Est. 1989

Father's Day

Sunday 16th June

Treat Dad to a slap up meal at the Rose 'n' Bowl
(Gift vouchers available)

01706 879555
www.rosenbowl.co.uk



Enjoy the racing from Ascot

Ladies Day

At The Riverside

Thursday 20th June 2019
12.30pm for 1pm

Tickets £37.50 Incl Drinks Reception, 2 Course
Lunch, Afternoon Tea & Portrait Photograph
Plenty of prizes to be won!

Tickets available from the Riverside

TEL:01706 854130
Email: riverside-whitworth@zen.co.uk



housing&care21

Join our waiting list for Retirement Housing apartments

Riddiough Court, in Whitworth, provides private and secure one bedroom apartments to over 55s. Services and benefits included.

.....

To arrange a viewing, or for more information call the Court Manager on 0370 192 4773.

housingandcare21.co.uk

Skyline 6 takes place this Sunday (May 12) so if you've not returned your entry form yet to take advantage of the early-bird price (£3 for the full 14-miler) you've only till Thursday to do so. Till then you can drop your form off at the Leisure Centre, UBS, Nibbles or The Riverside. After that they need to go only to the Leisure Centre or UBS, please, and the entry fee is then £5, as it is on the day. The shorter (5 miles) **Eastern Skyline** is £2 and £4. Forms are still available all across Whitworth, or you can print one off by going to www.whitworth-sports-council.co.uk.



If you've never done the walk before, why not give it a go? 14 miles on the moors is a challenge, of course, but you walk at your own pace, the views are wonderful, the terrain is varied, and the company is cheerful and supportive. You'll have a full set of route instructions, and you won't be on your own – 454 walked last year, all ages from Brownies to grans. As ever, both walks begin and end at Lobden Golf Club between 8 and 9am. All entrants who get back to Lobden will be provided with a free meal in the clubhouse, plus a certificate and maybe a little something extra this year. Dress for the conditions, of course, with sturdy shoes or boots, and a layer extra in your rucksack because it's generally cooler on the tops... and a waterproof just in case. We don't allow dogs on either walk – sorry. Each of the 4 checkpoints will have orange juice/water available, and there will be a burger van at Britannia, 5 miles in.

If, any time this week, you go to <http://spoddenvalleysrevealed.wordpress.com/> you'll find links and instructions on how to download (free) an audio commentary that you can listen to on your phone at various points as you walk. It's been specially rewritten to tie in with this year's anticlockwise route.

WHITWORTH AND HEALEY VALE BAND CLUB

Real Ale lovers will be pleased to note that the Band Club has been awarded CAMRA North East Lancashire Club of the Year for 2018-19. Traditional beers from a variety of local and national brewers available or try out our gin selection. Current beer selection shown on facebook page.

Regular fortnightly quizzes continue Sundays; check the notice board or web / facebook page for dates. We also have Karaoke, generally on the last Sunday of each month.

Artist coming up Friday 19th April local duo "Between the Vines"; Saturday 25th May Vocalist "Michelle"; 7th of June Nicola Beazley folk with Brass.

Club rooms are available, generally free of charge, for use by societies and local groups. Contact Stewards on 01706 852484.

ANGLO RECYCLING CELEBRATES 80 YEARS IN BUSINESS

Anglo Felt was founded on August 11th, 1939. In a wonderful story of cooperation, the founder, Hans Neuhaus, a German Jew, was visiting his shoe and slipper customers in 1938 in the Rossendale valley. He received a message from his wife (not a Jew) that German reprisals were reaching such a level that his life was in danger if he returned.

He stayed and using his expertise and working with his customers in the shoe industry who supplied capital, they founded Anglo Felt to supply slipper components for footwear.

Hans ran the business successfully till 1970 but, alas, when his son Ralph took over the business fell on hard times- losing money through much of the 1970's and early 1980's. The rot was stopped by Peter Riley – who also has written a fascinating history of the company.

However, it was not until Kingston Macaulay bought the business in 1987 that the company had access to the capital it needed to be transformed.



His son Simon took over in 1998 – and recognising the growing importance of the environment- changed the name of the company to Anglo Recycling. The company invested in new machinery and was the first in the UK to recycle carpet offcuts. This was recognised by John Lewis who made them a key supplier. Anglo struggled to meet the demands now being placed on the business and it was not until current managing director, Andy Hall, arrived in 2013 that the company (now employing 45 people) modernised and adapted to the demands of being a modern manufacturer.

FRIENDS OF WHITWORTH YOUTH

Monday – Drop in Youth Club 6.30-9pm Scout Hut

Tuesday – Drop in after school 3.15-4.15pm 515 Market Street (term time)

Thursday – Drop in Youth Club 6.30-9pm 515 Market Street

Whitworth Youth also provide one to one mentoring for young people who need extra support and hold a monthly 'Dad's Me and Tea' at Tonacliffe primary school, as well as holiday provision for high school age children.

During the first year with a full- time youth worker and growing team Whitworth Youth have tripled their provision and have plans for even more this year! Thanks to help from Whitworth Town Council they now have use of 515 Market Street as a base, an incredible resource allowing them to reach more young people on a weekly basis.

The young people brought donations of for people in the community who are less fortunate, helped pack the hampers and deliver them to people's homes. The donations were gratefully received by all.

Dad's Me and Tea is a huge success seeing over 50 families attend each month, to eat together and take part in fantastic activities, in March the families made Mother's Day gifts for the amazing mothers in our community.

Youth worker, Sarah Corke says "We could not be more thankful for the support we have received from everyone in this wonderful community. Your young people are a joy to work with they are a credit to you!"



The hammers and nails always go down well at dads me and tea!



The retiring Mayor, Councillor Madeline DeSouza visited dads me and tea

NORMAN HILL FABRICATIONS



Gates • Railings
Security Grilles • Site Welding

Unit 14, Daniel Street Industrial Estate,
Whitworth
OL12 8BX

Tel: 01706 852184

Mobile: 07980 957351

Email: norman@normanhillfabrications.co.uk

www.normanhillfabrications.co.uk

Call now for a FREE,
no obligation quote!

A. J. Nuttall Ltd., Pharmacy

Mr A.J. Nuttall BSc (Hons), MRPharmS



- Confidential computerised records
- Repeat prescriptions
- Ostomy and Surgical Products
- Sports Injuries

So the next time you're unwell...
ask your pharmacist!
You'll be taking good advice.

Tel: 01706 853284

603 Market Street, Whitworth (opp. Medical Centre)
Mon - Fri 8.30am - 6.30pm (closed for lunch 12.30 - 1.30pm)

**Oak
Computer
Networking**



YOUR FIRST PORT OF CALL FOR:

- Custom-built PCs
- Networking design / installation
- PC upgrades / repairs
- Wide range of branded IT products

Contact Stuart:

t: 01706 854071

e: sales@ocn-ltd.co.uk

w: www.ocn-ltd.co.uk

*** WE WORK EVENINGS AND WEEKENDS! ***

**SKIRMISH
PAINTBALL GAMES**



10% Discount
with this advert

**OPERATION
LASER TAG**

www.operationlasertag.co.uk

www.playpaintball.co.uk

01706 345821

WHITWORTH HERITAGE CENTRE

Do you have a spare blacksmith's anvil?

As part of a permanent display depicting the history of the Whitworth Doctors, Whitworth Historical Society is on the lookout for a full-size blacksmith's anvil for use as a display centre piece. Back in 1764 the Doctors, before their transition to bonesetters and surgeons, began life as blacksmiths and farriers but soon realised there was a local need for the services of a doctor. The Taylors, successful in their treatment of broken and dislocated limbs of beasts involved in accidents, began to perform a similar service for the human population. Before long human customer numbers outstripped the animal patients and were, in any case, far more profitable. It is said that each Sunday, as many as 140 patients were bled, free of charge. At that time bleeding or bloodletting was thought to be a measure effective in the prevention of disease. The Taylor family was to serve the medical needs of Whitworth for over 100 years before the last member of the family, James Eastwood Taylor, died in 1876. The Taylor family vault is located in the churchyard of St Bartholomew's.

The Society can be contacted on 01706 344894 or 07434 703972.



WHITWORTH U3A

In May Whitworth U3A held its 2nd AGM at the Riverside with the current committee being re-elected. The membership has steadily grown since the group formed in April 2017, with the interest groups all doing well. The new birdwatching group is up and running, and the walking group continues to be well attended, with upcoming walks planned for Walsden, Holcombe Moor and Ullswater. The monthly meetings are also popular and now regularly attract over 40 members.

In March they held a beetle drive at Berni Inn, with everyone enjoying themselves and it quickly became quite competitive. It was surprising how many members could be so quick rolling the dice. The monthly meetings are held on the 1st Wednesday of each month at the Riverside at 1pm, the speaker on June 5th is Vic Heaney. Vic walked from the Pyrenees to Blackpool, where he was born, taking 70 days and arriving on his 70th birthday. He was walking to raise funds for research into Pancreatic Cancer.

A full list of speakers, contact details and interest groups, can be found on the facebook page and website (u3asites.org.uk/whitworth).



MESSAGE FROM THE RETIRING MAYOR

Time certainly flies by when you are having fun so they say. My mayoral year has finally come to an end and the chains will be passed on to Cllr. Lynda Barnes who I am sure will enjoy her time in office as I have enjoyed mine.

I have loved every minute being in the very privileged position of Mayor of our town. I have attended numerous events both on home soil and further afield. I have met so many hard working, dedicated and inspiring people many of whom are volunteers and, like myself, have a passion for their town and community.

I would like to thank everyone who has supported me and my chosen charities, we managed to raise an amazing £3035.36. This will be distributed between local groups in Whitworth, Springhill Hospice and to purchase a piece of equipment for the use of the dementia residents in Barley View Care Home.

JJ ELECTRICAL CONTRACTORS

All types of electrical work undertaken
...at competitive prices

- Re-wires
- Central Heating Systems
- Alarm Systems
- Data Installations
- Door Entry Systems
- Fire Alarms
- LED Lighting
- Solar

ALL WORK IS GUARANTEED

01706 404118
07731 711926

www.jjselectricalcontractors.co.uk



Joshua Law Traditional Family



Butchers...

- Cooked Meats (prepared & cooked on the premises)
- Bury Black Pudding
- Quality Steaks (matured for at least 21 days)
- Finest Sausages
- Finest English Spring Lamb
- Poultry, Bacon and Game
- Home Made Ready Meals (changed weekly)
- New Special Offers Every Week

...& Bakers

Freshly baked bread, pies and sandwich orders!

TELEPHONE ORDERS WELCOME
FREE HOME DELIVERY

Opening Hours:

Mon-Fri: 7.30am-5.30pm
Sat: 7.30am-1.30pm

Tel:

01706 852313

739 Market St., Facit, Whitworth, OL12 8LD

WANTED!!!

THIRSTY SEA DOGS WITH AN INSANE APPETITE
FOR ALE AND BRIMMING POCKETS OF SILVER!!!

**THE MEDICINE TAP IS OPEN,
COME AND SAMPLE SOME OF OUR
CRAFTY BREWS...**

MIGHTY MEDICINE BREWING COMPANY



UNIT 4
DANIEL STREET
INDUSTRIAL ESTATE
WHITWORTH
ROCHDALE OL12 8BX

LOCATED 50 METRES FROM
THE MAIN ROAD (MARKET STREET)

**ROCHDALES NEWEST
BREWERY & BAR**



WWW.MIGHTYMEDICINE.COM

CHECK OUR WEBSITE/
FACEBOOK PAGE
FOR FURTHER DETAILS

MITCHELL'S MOTOR SERVICES HALFWAY GARAGE

MOT preparation, presentation & repair
Pick up delivery service available
(by appointment)

Diagnostics, supported by the latest
'Snap On' software
Servicing / Repairs



cars, vans, 4x4's
all makes, all models
no job too large or small

01706 854300 • 07977 458646

721 Market Street, Facit, Whitworth, OL12 8LD

ONE BARMY NIGHT LEADS TO ANOTHER!

In March, the Riverside opened their doors for their first ever Barmy Bingo! Not knowing what to expect, you didn't disappoint! There was loud music, singing, dancing, altogether silliness and a spot of bingo too.

Terry and Zac can't wait to come back in September. "What a top night! The crowds of Whitworth never disappoint.... next time it's going to be bigger, sillier and even more BARMY! See you on Friday 06th September 2019"

Tickets £10pp available NOW from Lisa or Aimee on 01706 854130 or email riverside-whitworth@zen.co.uk



WHITWORTH MEN'S SHED

Whitworth Men's Shed is a community project for men of all ages. It is a social space where men can come and get involved in practical activities or just have a chat with other guys over a brew. New members are always welcome!

The project is based at 6, Milner Street, off Hall Street and is open on Monday afternoons, Wednesday mornings and Fridays from 10am until 3pm.

The Shed's gardening group have received a license granting permission for them to improve the verge that runs behind Whitworth Men's Shed and along the Milner Street car park. There are also a number of other groups working together on different activities. If you're looking for somewhere to take on a personal challenge, the Shed now has a number of equipment restoration projects to choose from.

Alternatively, if you'd rather sit and watch with a brew, that's fine – there's always someone to talk to! For more information pop in or visit the WMS website www.whitworthmenssheds.org.uk.

If you're anxious or unsure about whether WMS is for you, Community Connectors can offer support for people wanting to access community activities. Find out more by phoning 01282 433740 or by emailing connectors@bprcv.co.uk



UPCOMING ACTIVITIES AT ANALOGUE FARM

This spring, the Canadian artist film collective 'Film Farm' will be visiting Analogue Farm. Inspired by rural landscape, their handmade 16mm films are produced using artisan methods. The collective has made a major contribution to the international field of artist film over the last 25 years. On Friday 24th May, Karel Doing, artist-in-residence at Film Farm in 2018, will run a one-day 'phytogram' filmmaking workshop, which uses the internal chemistry of plants for the creation of images on photographic emulsion. In the evening, Film Farm will show a programme of films followed by discussion with the filmmakers.

On Saturday 8th June there will be a live performance for children and adults alike, 'The Queen of the Well', with puppets, music and experimental visuals, all inspired by a local story about a water spirit on Brown Wardle Hill. The performance is in association with the Mid Pennine Arts project Spodden Valley Revealed and relates to a Folklore Tapes record release, which features St Anselm's School Choir and the Whitworth and Healey Vale Brass Band.

Also look out for 'The Bug', the new community space on Market Street opening soon, which will provide exhibitions, workshops and events.

For full details and to book for these events please visit the website www.analoguefarm.com or email analoguefarm@gmail.com



Saturday 15 – **Sunday 23 June 2019**

EVENT COLOUR KEY:

- Must enter in advance
- Turn up and join in

A celebration of Whitworth sporting activity for all ages, all genders and all levels of fitness, experience and ability

We're a week later than usual this year, by way of experiment, and a little thinner than last year – no football, no Treacle Challenge, no shooting. Even so you may find yourself having to record the Women's Football World Cup to fit in all the WSF events you want to take part in. Basic details below, but if you have a query call the event organiser, or Jo Furtado on 07813180748, or go to www.whitworth-sports-council.co.uk.

■ **SAMBA DANCE**, now established in the old Trains building at 613 Market Street, near Tong Lane (tel. 854960), are giving you the chance to try out their classes, **FREE**. Classes printed in below run at that time weekly, but there are more – pick up one of Samba's leaflets for full details. You can sample Samba's kind offer **any time this June**, not just during Festival. If you decide to, please phone Samba beforehand to sort any queries and to let them know you're coming.

■ **WHITWORTH WATER-SKI**, during Festival **and the week before**, is offering anyone the chance to try out any of their activities at member rates. Ring 852151 for details. (See also June 22/23 details.)

CLAW will once again be giving **free swim tokens to all who take part in Festival events**. They can be redeemed at the Leisure Centre on John Street at any appropriate time until July 26. (Under-8s must be accompanied in the pool.)

ENTRY FORMS for all those events that require **PRE-ENTRY** will be available this year from various places, but must be returned to one of the following:

*The Riverside * The Leisure Centre (Baths) * Any Whitworth Primary School

Your entry form can be returned, with entry fee, to any of these places – it doesn't have to be the place you picked it up. BUT do please read entry forms carefully to see **WHEN** you must return them by, and please note that **different events have different deadlines**.

SATURDAY 15 JUNE: 1.30 – 4.30 WHITWORTH VALLEY FC

The Mayor will officially open Festival at 1.30, and then, as last year, we're straight into a traditional-style Sports Day, with running races, welly-wanging, tug'o'war, and some novelty events – **FOR ALL AGES**: no-one's too old! There will be (small) cash prizes for the first 3 in all children's individual events, and (small) consolation prizes for all who enter. Grown-ups compete for love! Full details of all events will be published in a separate programme available from the Leisure Centre, schools, The Riverside and lots of other locations around Whitworth. All events (bar one!) are **FREE TO ENTER**.

SATURDAY 15 JUNE – ELSEWHERE

- **10am – 3pm** Cowm Leisure, Quarry

There is no particular M/C event this year, but every Saturday and Sunday people flock up to the quarry to practise their skills and enjoy themselves. If you're interested, but you want to take a look first, or you want more information, why not pop along? Talk to any of the stewards, or ask them to point you towards John Whittle.

- **1pm and 1.45pm** Riddiough Court

Never tried it? Want to get back into it? Whatever your level or age, experienced yoga teacher Rita Thompson is offering **FREE group tasters**, with sessions lasting half an hour. You'll need to book – ring 07935964137 to arrange, please.

MOTOR-CYCLING

YOGA

SUNDAY 16 JUNE – A GRAND DAY FOR A GOOD WALK (fingers crossed)

Whitworth is blessed with no fewer than four walking groups, all aimed at different kinds of walkers. See Wednesday for the gentlest walk. Today it's the most challenging of the groups making their offer...

- **9am** Lobden, just above the cattle grid on Whitworth Rake **WALKING** ■

Today's walk will be 8-10 miles long (about 4 hours) over moderately rough ground, so you need to be reasonably fit. The walk will take you to the Jackson Memorial beyond Hades Hill. Wear sturdy shoes or boots, and dress for the weather (allowing for the fact that it's always cooler on the tops). Bring a snack and a drink. Well-behaved dogs are welcome. **There is no charge.**



• **10.45am Festival Park (next to Riverside)**

This traditional event, in which newcomers to bowling, or novices, will be paired up with a more experienced partner, and given lots of playing time in a friendly tournament, is designed to provide a proper chance for people to take the first step and find out if they like the sport. Bowling clubs have entry forms, but Joe Warburton (853457) will be expecting calls. Or simply turn up at 10.30 and ask for Joe or Jean.

BOWLING ■



MONDAY 17 JUNE

• **3.30pm High School Sports Hall**

A wonderfully competitive tournament last year was won by Tonacliffe. Who will take the Mollie Campbell trophy this year and, just as importantly, will it be as good an evening's sport? Thank you to Brad Hancock for agreeing to referee.

PRIMARY SCHOOL BASKETBALL

• **6pm High School Sports Hall**

Another traditional event. Two tournaments running simultaneously, one for those in years 6, 7 and 8; one for years 9, 10 and 11. No need to be a club member to enter, but you must fill in a **PRE-ENTRY form**, or contact Paul Shiel on 853115.

JUNIOR BADMINTON ■

• **6.30pm Whitworth Square (Red Lion)**

This one's for over-16s with some MB experience (or the willingness to give it a right go), a bike in decent nick and a (compulsory) helmet. It'll consist of a 2-hour tour of the hills around Whitworth. Ring Richard on 07780697381, or just arrive in good time.

MOUNTAIN BIKING ■

• **6.30pm John Street football pitch**

This was a sparkingly cheerful event last year. So, once again, Friends of Whitworth Youth are aiming it at those of an age to attend the Youth Club, but you don't have to be a current member. Sign up via Facebook, or speak to Sarah or Matt.

ROUNDERS ■

FREE Samba Dance tasters 10am Ballerina Bear (18 months+) / 5pm Freestyle Disco (9yrs+) / 6pm Bums & Tums (adults)

TUESDAY 18 JUNE



• **3.30pm High School Tennis courts (Sports Hall if wet)**

Thanks, once more, to Paul Gallagher for giving 30 or 40 young people the chance to represent their school at a sport that needs all the support it can get. Tonacliffe batted with great gusto to take the Hiram Slack trophy last year.

PRIMARY SCHOOL CRICKET

• **5pm Cown Reservoir**

For many children, aged 5 to about 12, this is the high point of the week – a gentle ride on a beautiful horse, with **NOTHING TO PAY**. Just turn up in old clothes – long trousers, please, and a shoe/boot with a low heel – wait your turn (it is a popular event), then load up and off you go. Just remember to pat the horse and say thank you to Nicky and her team.

PONY-GO-ROUND ■

• **6pm – 8pm Cown Reservoir**

A flat water session in a white water raft, run by a Qualified Instructor who also represents GB internationally, this year in Australia and Bosnia. Email Jess at redroesrafting@gmail.com to book limited spaces for you as an individual or for your club/group. Participants must be 10+. £3 for hire of equipment/facilities. Further bookable sessions Wed and Fri.

RAFTING ■

• **6pm Metcon PT gym, Tong Lane**

Whitworth's only group training facility offers strength and fitness classes Monday to Saturday, but this Festival week they're offering two **FREE trial sessions** – now and Thursday 6pm. All abilities welcomed by their great coaches. To check out the full range of services go to Metcon Personal Training on social media. Just turn up with a bottle of water.

PERSONAL TRAINING ■

• **6.30pm The Riverside**

Last year's event had to be cancelled at the last minute due to sudden illness, so hopefully all at Salle Angelo are fit and healthy this year and we can turn out in numbers to justify their travelling out to us again. It's open to adult or child (from about 8), **entirely FREE**, with all equipment and expert coaching provided, so come and wield a sword. Call Paul Marr (07814018777), or just arrive for 6.30. It's hot inside body armour, so bring a bottle of water.

FENCING ■

• **7pm/8pm Unit 1 (Ex Samba) off Station Road, Facit**

An open training session, where anyone can come along and **try out for FREE**. Simply arrive a few minutes early wearing loose clothing, introduce yourself to Andy, and he'll provide gloves and pads. Juniors at 7pm, adults at 8pm.

THAI BOXING ■

• **7-9pm High School Sports Hall**

Netball is booming right now, partly thanks to the exploits of England's Commonwealth Games winners... This is a club that runs socially and welcomes new and returning players, without the pressure of inter-club competition, but all who turn up play seriously. **Tonight is FREE**, so it's the perfect time to try out. It's for over-16s, really, but if you're a *little* younger than that you can come along today. Ring Heidi on 07970341645, or just turn up ready to play.

NETBALL ■

FREE Samba Dance tasters 4- 5pm Young Performers (Drama 4-9yrs) / 7.30-8.15pm Boogie Bounce (Adults)

WEDNESDAY 19 JUNE



- **1pm** **Library**

HEALTH WALK ■

A circular group, mostly on level terrain, led by a member of the *Up and Active* team, for anyone who enjoys walking, socialising and a brew afterwards. **FREE**. Just turn up, with suitable footwear.

- **2pm** **Greenbrook House**

INDOOR GAMES ■

Competitions in bocchia, skittles, darts and carpet bowls for anyone over 50 to try their hand at – you don't have to be a Greenbrook resident: all are welcome. **FREE** entry - you may even get a free brew!

- **2.15 – 3.15pm** **Library**

WEIGH-IN and EXERCISE SESSION ■

This **FREE** weigh-in and informal chat about healthy lifestyles is followed by a gentle exercise class to get you moving and stretching. Drop in for any aspect of it that suits your needs. Simply turn up wearing comfy clothes and shoes. For more information about these activities, contact Fiona on 10706 221524.

- **3.15pm** **High School Sports Hall**

PRIMARY SCHOOL NETBALL

Those Commonwealth Games gold medallists must have started *somewhere*... Can Tonacliffe retain the title they won so impressively last year? Thanks are due to Vicky Tighe for agreeing to organise and umpire this event.

- **6pm** **Cowm Reservoir**

RAFTING ■ See Tues for details

- **6pm – 7pm** **Library**

SOCIAL DANCING ■

This is aimed at those of, shall we say, mature years who would like to indulge their terpsichorean skills in a companionable setting. Being sociable is as important as the dancing. Come along for **FREE** this week to see if you like it. Followed by...

- **7pm – 8.30pm** **Library**

GENTLE EXERCISE ■

A combination of Pilates, yoga and therapeutic relaxation exercises, done to music, for people who want to improve mobility, flexibility and toning. Wear comfy clothing. Again you can **try out this week for FREE**, to see if it's for you.

- **7.30pm** **Scout Hut, Longacres Lane – start/finish Edward Street** **SENIOR FELL RACE ■**

A challenging race of 3+ miles over Brown Wardle and onto Hades but still do-able by a reasonably fit novice: minimum age is 16 on the night. This year the race is part of a local grand prix circuit, so there's expectation of a good field and a competitive race. Registration is at the Scout Hut from 5.30pm, or ring Andy Lee on 344436.

*** *Andy's looking for marshals for this event. If you'd like to help out, please give him (or Jo) a call.* ***

FREE Samba Dance Tasters 4.15 - 5pm Tiny Tappers (3 -6yrs) / 7.45 – 8.30pm Boogie Revolution (Adult)

THURSDAY 20 JUNE



- **9.30am** **Valley FC, Rawstron Street**

PRIMARY SCHOOL TAG RUGBY

Ian Jones of Rossendale RUFC will have been coaching in local schools prior to this all-action event. Thorn went home to Bacup with the trophy last year.

- **4.30pm** **Lobden Golf Club**

JUNIOR GOLF ■

Another chance to try out for **FREE**. Kevin and Claire are making the usual generous offer: if you're 16 or under and you'd like to try your hand at golf, just turn up at the friendly clubhouse and they will loan you the equipment, coach you *and* feed you some tea. How can you refuse!

- **6pm** **Metcon PT gym, Tong Lane**

PERSONAL TRAINING ■

Same deal as Tuesday above...go on, give it a go!

- **7pm** **Lobden/Brown Wardle**

JUNIOR FELL RACE ■

Hopefully not as windy as last year as runners from 8 to 16 years old, male and female, try to get inside the magic 20-minute mark, or win their category, or beat their own best time. If you wish to run, you **MUST PRE-ENTER, so pick up a form** - NO entry on the night. Registration will be in the Golf Clubhouse.

*** *Jo's looking for extra marshals for this event. If you'd like to help out, please give him a call on 07813180748.* ***

- **7pm (juniors)/8pm (adults)** **Unit 1, off Station Road, Facit**

THAI BOXING ■

Another open training session. Look back to Tuesday for details.

FREE Samba Dance tasters 4 – 4.45pm Cheerleading (9yrs+) / 7 – 8pm Zumba (Adults)/ 7.45 – 8.3pm Beginner Boogie Bounce (Adults)





FRIDAY 21 JUNE

- 1pm High School Sports Hall

PRIMARY SCHOOL LACROSSE

In 2013 Kerrie Lawler was the first recipient of the Ian Clegg Legend Award for best contribution to Sports Festival. Last year she ran a magical tournament involving over 60 players, from all of Whitworth's five schools, having coached them herself over the previous month. She's back again, with this tournament again intended to showcase the fruits of her many hours' coaching, for which we are very grateful.

- 1.30pm Greenbrook House (next to Valley FC)

BOCCIA ■

Think indoor boules, played with squashy balls, and very sociable. Boccia can be played equally by able-bodied and disabled athletes *of all ages*. If you (and your friend?) fancy trying the sport, this event is **FREE** and open to anyone - you are very welcome to come along. Amy will show you how to play and include you in the friendly tournament. If you've queries ring Amy Taylor on 07734488803, or just turn up.

- 6pm Cowm Reservoir

RAFTING ■ See Tues for details

- 7-9 pm High School Sports Hall

BADMINTON ■

The badminton *club* meets regularly on a Monday. This is *not that*. On a Friday night you can simply turn up and play, socially, no matter what your experience or ability. **This session will be FREE** to any newcomer – simply turn up in your trainers, ask for Paul, and he'll loan you a racquet and get you started.

- Tea-time onwards Lobden Golf Club Anyone for... CROQUET? (and other lawn games) ■

A family evening of gentle lawn games for all the family – all ages welcome. **No charge**. Bring your own picnic and blanket, enjoy a drink, and have a go at giant Jenga, boules, quoits etc, and if you've never tried croquet, now's your chance. Refreshments and snacks will be available from the bar. A bit of fun on a balmy evening...if we're lucky. (And if we're not we'll do what we can inside the clubhouse.)

SATURDAY 22 JUNE

- All day Cowm Reservoir

WATER SKI-ING

Whitworth Water-Ski Centre are hosting qualifiers for the British Championship today **and tomorrow**. This is not a competition - so the focus is very much on the skiers who are all undergoing *assessment*, rather than the spectators – but there will be plenty of very capable skiers on the water if you fancy watching. Refreshments available.

- 11am – 2pm Unit 1, off Station Road, Facit (ex-Samba) THAI BOXING FAMILY OPEN DAY ■

A chance to come along and take a look at what this amazing, friendly club has to offer. Barbecue and other refreshments, bouncy castle and some Club presentations, but also, from **12 till 1pm**, the whole family can have a go together, **FREE**, at Thai Boxing under Andy's watchful eye. Gloves and shields to suit all ages will be provided.

- 1pm Sportsman, 464 Market Street

BOULES ■

Turn up and join in – that simple! **FREE, of course!**

FREE Samba Dance tasters	9.15 – 10am Mini Movers Pre School Fun Dance (2yrs+) / 10.15 – 11am Baby Ballet
---------------------------------	---



SUNDAY 23 JUNE

- 8am Leisure Centre/Cowm Reservoir

SPLASH & DASH ■

After our traditional finale, our now-traditional well-deserved Riverside breakfast for all those 8-16-year-olds who will have swum 8 lengths of the pool, then run 1.75 miles to the res. and round. (Their family supporters are welcome too.) Competitors must **MUST PRE-BOOK to enter, so pick up a form**.

*** Extra-early-rising **marshals** are needed for this event. If you'd like to help out, please ring Jo on 07813180748 ***

- 10am The Arena (above the stables opposite the Cock and Maggie) EQUESTRIANISM

And here's another iconic Whitworth event, offering a chance to see fabulous beasts up close in competitive action – dressage, show jumping, puissance – in a unique setting. Just follow the signs up the hill. Refreshments available.

- All day Cowm Reservoir

WATER SKI-ING

Day 2 of the water-skiers' assessment. (See Saturday above.)

PS...

ANGLING

Whitworth Valley Angling Society had wanted to be involved in Festival again this year, but predation problems at the Society's water make that difficult just now. But if you've ever wanted to fish, but have never known how to go about it, feel free to ring Nigel Ashworth (07964793898), who *may* be able to help you out...but not this week.

SPODDEN VALLEY REVEALED AT WHITWORTH MUSEUM

As part of the archaeological investigation into the Spodden Valley; Mid-Pennine Arts alongside Dig-Ventures present a series of talks with accompanying prehistoric finds display and flint knapping demonstration. Hosted by The Whitworth Historical Society.

27th of July

10am - The Archaeological Investigation of Spodden Valley and the Results of the Volunteer Field Survey held on the 7th, 8th and 9th of June 2019 for more info see <https://digventures.com/spodden-valley/>

11am - Mesolithic Flint Sites in the Spodden Valley

1pm - The Munitions at Healey Dell

2pm – Contents of the Whitworth Museum Archive

28th of July

10am - Historic Character Dramatic Development

11am - Archaeological Artist Residency Project

1 – 3pm - Flint Knapping Demonstration Session

This project is part of the Spodden Valley Revealed project managed by Mid Pennine Arts, funded by The National Lottery Heritage Fund. For more information visit: <https://spoddenvalleyrevealed.wordpress.com/> or email Diana Hamilton: Diana@midpenninearts.org.uk

ROSSENDALE HOSPICE SUPPORT AT WHITWORTH LIBRARY

Whitworth Library is privileged to be hosting Rossendale Hospice outreach sessions. These sessions aim to support people in palliative care, including people living with cancer and other life-limiting illness. This type of care is focused on relief from the symptoms and stress of a serious illness. The goal is to improve quality of life for both the patient and the family. The sessions will offer:

- Group support
- 1 to 1 support
- Signposting to appropriate agencies
- Bereavement counselling referrals

These sessions will start on Thursday 20 June and then run from 2 pm to 4pm on the third Thursday of each month. The first hour, from 2 - 3 pm, will be a group support session and the second hour, from 3 - 4 pm, will enable flexible time for 1 to 1 support needs.

The Friends of Whitworth Library Group hope that news of this wonderful facility can be shared widely through family, friends' and other networks, so that local people can be supported appropriately and benefit from care which focuses on providing patients and families with physical, emotional, social, practical, and spiritual support.





See what's happening in Whitworth Library . . . activities are free unless stated

Mondays

14:00 – 16:00
18:00 – 18:45

Knit and Natter All welcome!

Bedtime Story - every fourth Monday of the month (18 months - 8 years).

Tuesdays

10:00 – 12:00
10:00 – 12:30
10:00 – 12:00
10:00 – 12:00
14:00 – 15:00
15.30 – 17.00

Lighthouse Coffee Morning All welcome!

Scrabble Club Great company and good fun – why not join us?

U3A Family History Group 3rd Tuesday of month. T. 01706 750542 (Glenda) for info.

Citizen's Advice, by appointment. Please ring CA on: 0300 456 2552.

Storytime Session (18 months - 6 years).

U3A Wellbeing 1st Tuesday of month. T. 07762 757925 (Sheila) for info.

Wednesdays

13:00 – 14.00
14:15 – 15:15

18:00 – 19:00
19:00 – 20:30

Up and Active Health Walk Meet at the library for an accessible walk and a brew.

Up and Active Weight Loss Drop-in First 30 mins FREE weight management and healthy lifestyle advice; second 30 mins exercise session - suggested £2 donation.

Mature Movers and Groovers Dance with Sheila Daly (07762 757925). £5 donation.

Yoga, Pilates and Relaxation with Sheila Daly (07762 757925). £5 per session.

Thursdays

09.30 – 12.30

09.30 – 10.30
10:00 – 11.30
10.00 – 12.00

11:15 – 12.15
14.00 – 15.00
14.00 – 15.00
14.00 – 15.00

14.00 – 16.00

National Careers Service Supporting people into employment. 1 hr appointment slots bookable at the library.

Surf and Sup and Learn My Way Personalised IT courses – please speak to librarians.

Shared Reading Group All welcome!

The A Team Social group for people with learning disabilities. For information, please email: melanie_ashman@yahoo.com

Up and Active Health Walk Meet at Stubblylee Park café for an accessible walk.

U3A Creative Writing 1st Thursday of month. T. 07903 570008 (Kay) for info.

Bookworms Reading Group (for adults). 2nd Thursday of month.

Rossendale Hospice Support Group for people in palliative care and their families with an extra hour for 1 to 1 support afterwards. 3rd Thurs of month, from 20 June.

U3A History on 4th Thursday of month. T. 01706 875585 (Jackie) for info.

Fridays

10:15 – 11:30
14:30 – 16:00

14:00 – 16:00

Baby Bounce and Rhyme (birth to 18 months).

Afternoon Tea on last Friday of month - with guest speakers. An opportunity, when advertised, to speak with Carers Link and Cllr Peter Stein. Everyone welcome!

Crafty Sew and Sews on 1st Friday of month. All welcome! Email mel.hearn@sky.com to book on

Saturdays

10:30 – 12.30
13: 00 – 15:00

Lego Club (for all ages).

Whitworth Wellbeing Group For more information, please email Jodie at: whitworthmentalhealth@aol.com

. . . and also, one-off events, books, information, newspapers, computers and friendly faces.

Everyone welcome!

Updates can be found in the library, or on the Friends of Whitworth Library Group Facebook page, or contact friendsofwhitworthlibrarygroup@gmail.com to be added to the mailing list.

theboilerfitters.com
Professional Plumbing & heating service



Finance available from only **£10 per week**

Contact Daniel Brophy:
07817 784435
email:
db.plumbing@live.com



a trusted source of
care in your
own home

We can help you with...

- Companionship
- Light housekeeping
- Local transportation & errands
- Meal preparation
- Respite support
- Shopping
- Convalescence support
- Personal Care
- Specialist Dementia / Alzheimer's care and much more...



From just a couple of hours a day, to full time care, our service is available 24 hours a day, seven days a week.

Call us today on **01706 249100** for more information or visit www.homeinstead.co.uk/rochdale

'The company that cares about care'

Home Instead
SENIOR CARE
To us, it's personal.

Facit Garden Centre



We have a wide selection of plants, baskets and tubs

WE SELL COMPOST

Nutts about ice cream
now resident at Facit
Garden Centre
available weekends
over summer



Open Fri, Sat, Sun all day (plus bank hols)

Off Grange Road, Facit, Whitworth



**Having a party
or a get-together?**

We have a wide range of menus available
(including our famous potato pie!)
for collection, delivery or with service

Official caterer on the East Lancs steam
train, Bury: 'Dining with Distinction'



Call us now for a quote!

01706 853251

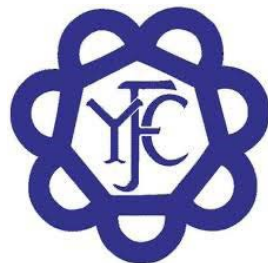
www.lordscaterers.co.uk

2 Spring Bank, Mills Street, Whitworth, OL12 8QP
(directly behind former premises)



LOCAL YOUNG FARMERS' FEDERATION

The local young farmers' federation have been busy over the past few months with off site visits to farms producing cheese and experiencing cattle, sheep and pig judging. In house activities and training included First Aid training and crafting sessions. They also competed against other local young farmers groups from across East Lancashire in sports and farming skills. They meet once a week on a Monday evening and are always on the lookout for new activities, guest inhouse speakers and site visits. The group is open to anyone from 10 years old to 26 years old, interest in farming and agriculture is all that's needed you don't have to be a farmer! Anyone able and willing to assist in any way especially as a guest speaker or offer a site visit. for further information please contact **Sarah Rose Rhodes Social Secretary and Joint Planning Officer on 07891 269998.**



BARLEY VIEW

Barley View Care home is now fully open and filling up with new residents, enquiries for assessment and admission are being taken. The home has 2 dedicated households with 14 ensuite bedrooms and access to kitchen, lounge and terrace areas. Residents enjoy home-cooked food, in bright, well-planned accommodation supported by well-trained care, housekeeping, laundry and catering teams. The residents have a packed activities programme in place which includes involvement from Sue Worrall a local poet, the Whitworth talking newspaper, Whitworth Museum, knit and natter volunteers and Rosemary for exercise. Events take place in the home to mark special days with entertainers and involvement local schools and volunteers.

Barley View has a secure garden and 2 terraces which offer a tranquil space for people to sit out and enjoy the sunshine. We welcome contact from local people and businesses to help create and enhance indoor and outdoor living spaces. Residents have highly personalised care and staff are also working on life stories and individual playlists – input from any keen historians or social commentators or even creative writers would make this activity even more special! Please contact Sughra at Barley View on 0300 3033977 for further information about residence or volunteering opportunities.



WHITWORTH NEWS



WHITWORTH VALE AND HEALEY BAND

The band came a highly creditable 4th at the Mineworkers contest at Skegness in January winning a trophy and £500. At the Area finals in Blackpool in February they came 6th which was a bit disappointing.

The concert season is well underway now with some of the local events as follows

Ramsbottom war weekend	Monday 27th May
Edenfield Whit march	Sunday 9th June
Curtain Theatre Rochdale (Alder Hey hospital fund raiser)	Saturday 29th June
Riverside Jimmy Grogan Memorial concert	Sunday 7th July
Rochdale golf club party in the park	Saturday 20th July
Riddiough court 30th anniversary party	Saturday 27th July

As you can see a very busy schedule for the band. The band continues to thrive especially with the Academy and Youth development who rehearse every wed in the club at 6pm. All sections of the band will feature in the Jimmy Grogan concert in July. If you would like any information about any of the above events or are interested in your child learning to play an instrument please contact Michael Whitby on 852613



For a friendly and professional service from an Independent Optometry Practice established for over 50 years.

LOOK NO FURTHER

33/35 Market Street, Bacup, Lancs., OL13 0AJ
Tel: 01706 874631



Complete beginners:
first 2 hour lesson
completely **FREE!**

DARREN LAWLER, ADI

- Lessons from £18 ph
- Local Whitworth instructor
- Pass plus courses
- Motorway and refresher lessons

07814 566 985
darren@daytonadrivingschool.co.uk
www.daytonadrivingschool.co.uk

TOWN COUNCIL NEWS

Every English town or parish must hold an **Annual Meeting of the Parish** for electors registered in the area. This year, Whitworth's Annual Meeting of the Parish takes place on Thursday 23 May at 7.30pm, at the Riverside. The meeting will be quorate (legal) if just two electors are present. Usually the parish meeting takes place the week before mayor-making but this year they are the other way around. Although chaired by the Mayor (or retiring mayor in this case), this is not a Town Council meeting. It is a meeting for all Whitworth people to get an overview of what is currently happening in the town, looking the work of the various organisations serving Whitworth, and offering electors the opportunity to raise queries and make observations.

It is also at this meeting that the Town Council present awards to member of the community.

The 2019 Jeff Ogden Services to the Community Award will be presented to Mr Dave Tattersall in recognition of his outstanding contribution to Whitworth life over 40 years playing the last post for remembrance services.



Charley signed with the Oldham AFC youth team in April 2018

The 2019 Jack Wilkinson Young Achiever's Award will be presented to Charley Leech in recognition of his outstanding achievements in football. The councillors were hugely impressed with his success and dedication to his sport which has resulted in him accepting a scholarship with Oldham AFC.



Dave playing the last post for the beacon lighting in November 2018]

It's usually over within an hour or so, so why not come along, everyone is welcome. See you there! For more information, contact Melanie Hearn, Town Clerk on 01706 852018 or email info@whitworth.gov.uk.



Plumbing & Heating Services

Professional, Reliable, Affordable

- For all heating systems
- Installation
- Service
- Repairs



Mobile: 07515 100 161

Tel: 01706 653 581

Email: brad@bowerheatingservices.co.uk



Britannia Roofing

Traditional Roofing

FULL RE-ROOFS from £1200

Flat roof specialists

Any size repairs undertaken

Soffits, facias, gutters and pointing

Steve Hester 07590 548779

GRANTS FOR COMMUNITY GROUPS

The Whitworth Community Partnership has a small grants fund for local community groups, offering grants of up to £250. Over the past year the Community Partnership has funded: University of the Third Age, Scouts, Horticultural Society, Whitworth Valley Football Club, Whitworth Youth, The Compass Group and Whitworth Tourism and Leisure Committee.

The grants have funded equipment, plants, activities and events. If your group is interested in applying, the grant form can be found at: https://www.rossendale.gov.uk/info/210201/your_neighbourhood/10738/community_partnerships/2

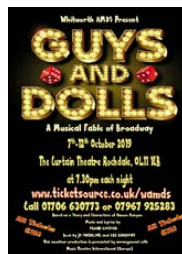
WHITWORTH AMATEUR MUSICAL AND DRAMATIC SOCIETY

There are three productions planned for this year. First up is the cult musical **"Spring Awakening"** from 16th- 20th July at St John's Hall, Facit. Based on Frank Wedekind's controversial play (once banned in Germany), Steven Sater and Duncan Sheik's brilliant rock score and emotional book take the story of sexual awakening, youth revolt, and self-discovery into a new century. Set 1891, Spring Awakening fuses issues of morality, sexuality, and an anachronistic rock score into a story that packs a powerful emotional punch. The show is not recommended for under 14s and tickets are just £10.



In a change of style and direction, the eternal classic **"Guys and Dolls"** will be staged at The Curtain Theatre, Rochdale from 7th - 12th October. Set in depression-era Times Square and based on Damon Runyons stories, Guys and Dolls is about a couple of big city gamblers and the women who love them. It features some unforgettable Broadway including "Luck be a Lady" and "Sit Down your Rocking the Boat"

"Guys and Dolls is a hit with audiences and casts alike." Andy Kelly explains "We are going to try and keep to the essence of the show and give it that 'Whitworth twist'. Those who have seen our recent productions will know what I mean- I really want to stretch the performers acting, singing, dancing and indeed- playing!" In order to keep prices affordable and attractive to all age groups- all tickets for Guys and Dolls are fixed at just £12!



Last- and by no means least the annual **Pantomime** is back at St John's. Dates are likely to be in school Christmas holidays and the panto is a surprise (undecided!) but it promises to be the usual mix of mayhem, laughter, music, dance and costume you have come to expect.

Andy concluded "WAMDS is growing year by year and will always need volunteer help backstage, with costume, props, set building and maintaining the building. We really want local people to come and get involved. We host regular fundraising and social events too. If it's something you've always fancied, then please contact us on 07947 609277"

Ticket info

"Spring Awakening" @ St John's Hall, Facit -Tuesday 16th to Saturday 20th July 2019
(All tickets £10)

"Guys and Dolls" @ Curtain Theatre Rochdale- Monday 7th to Saturday 12th October 2019
(All tickets £12) Call the Box Office on 01706 630773 or 07967 925283 or
Book online www.ticketsource.co.uk/wamds

WHITWORTH TOURISM AND LEISURE COMMITTEE

WHITWORTH FAMILY FUN DAY AND DOG SHOW

On Sunday 7 July, the Family Fun Day and Dog Show organised by the Whitworth Tourism and Leisure Committee is back! There'll be lots of attractions including rides, stalls, live performances by local dancers, candy floss and ice cream. Come along, bring all the family (even your pet!) and join in with the fun (and you never know – the sun may even shine too!).

This year there have been some changes to the event to make sure the dog show is over before the hottest times of the day.

There are four categories available for your dog to enter (£2 per dog per category). You can register in advance by calling into the Council Office at the Riverside (Monday to Friday 9.30am to 2.30pm) or register on the day (although you will have to get there dead on 12 to register for the first category) spaces will be limited so it is a good idea to register in advance. The winners of each category will then be invited back for the Best in show at 12.50pm where the pups compete for the star title!

New for this year will be a performance by Rossendale Drum Majorettes and, as usual, Samba will be performing you with spectacular dancing.

FAMILY FUN DAY & DOG SHOW

Sunday 7th July

TIME: 12pm – 4pm

PLACE: The Riverside **FREE ADMISSION**

- Samba dance performances
- Rossendale Drum Majorettes
- Stalls and games
- Inflatables and rides
- Face painting

Dog Show	
12.10	Finest Senior
12.20	Perfect Puppy
12.40	Cutest Dog
12.50	Best in Show

info@whitworth.gov.uk
01706 852018



WHITWORTH RUSHCART PROCESSION AND CELEBRATIONS

The annual Whitworth Rushcart celebrations will take place on the afternoon of Sunday 1 September. The procession will leave from Whitworth Museum at 1.00pm featuring numerous traditional morris troupes and led by the Rushcart itself.

From 1.15pm until 4.30pm, the Civic Hall will host stalls, entertainment and performances, plus the Whitworth Vale and Healey Youth Band. St Bartholomew's Church will be providing traditional hot food and the Wood Fired Pizza trailer will be serving fresh pizza. The bar will be open for liquid refreshments, including real ale 'Grogan's Delight' in memory of Jimmy Grogan, Honorary Townsman of Whitworth.

Whitworth's cart is unique as it is the only one in the UK to be covered in beautiful local heather; Rushcarts in the other areas are covered with rushes or tatters of cloth. Whitworth's Rushcart history goes back hundreds of years; initially the celebration was linked to the cutting of rushes to be strewn on the bare floor of the church as a form of insulation for the winter, taken to the church on the cart. Out of this grew a celebration which was enjoyed by the whole community.



For further information please visit www.whitworth.gov.uk



ASK Service Electrical Contractor

ASK for - Mike Keiley
Tel / Fax: 01706 854929
Mobile: 07837 065579

No job too small!

Certificates issued for Part P
Building regulations,
Appliance Testing
& Fault Finding



WE SPECIALISE
AND CATER FOR
YOUR NEEDS



B2B ARE COMMITTED TO SAFEGUARDING ALL OUR CLIENTS
OUR CARERS HOLD A VALID DBS POLICE CHECK

- Meal Preparation • Companionship •
- Funeral Arrangements • Gardening •
- Housework • Help with Medication •
- Waking Nights • Trips Out • Personal Care •

01706 751 599 | www.b2bindependentliving.co.uk
clareb2bindependentliving@outlook.com



AUDIOVISUAL — ONLINE —



Home Cinema and
Hi-Fi Specialists

www.audiovisualonline.co.uk

BACUP SHOWROOM

Unit 5 The Sidings, Bacup, OL13 9RW

Basil's

Traditional English Restaurant
**Father's Day bookings
now being taken**



01706 344896
264 Market Street
Whitworth

WORLD WAR ONE CENTENARY GROUP LEAVE A LASTING LEGACY

The Centenary Working Group have now finished their work after hosting an amazing centenary weekend in November 2018. In addition, they have left a legacy in the form of the centenary bench located at Moss Side Street, Shawforth. None of this would have been possible without the residents and business' of Whitworth. The final total raised was £2,108.66 which has been donated to the British Legion Poppy appeal, head office in London.



As you may be aware, a Bronze plaque and Memorial Centenary bench, for everyone to sit on and enjoy are now in place at the corner of Moss Street Shawforth. The plaque and bench were sponsored by our local businesses.

In addition, two Commemorative photo books of the weekend's events are available for public viewing one in Whitworth Library and one in the Council Chamber. Please feel free to visit and look at them.

The Centenary Working Group are very proud of the Valley and what the residents of Whitworth managed to achieve for that weekend.

CANCER RESEARCH WHITWORTH LOCAL COMMITTEE

The Committee would like to thank everyone in the village for their continued support.

The fund raising meal held at the Promenade in January raised £544 thanks to all who attended donated prizes and special thanks to Joe for his generosity and excellent meal. The quiz at the Band Club raised £404 thanks again to all who supported+ to the club for providing sandwiches and prizes. The next event planned is the songs of praise at Christ church Healey on Friday 17th May at 7pm this will be followed by the Annual golf tournament at Lobden on Sunday 23rd June.

The group will be trying a new venture this year a bowling tournament which will be held on the civic hall bowling green on Sunday 14th July further details to follow on this via facebook page and posters.

St Anselm' school fund raising continues and is now well over £1000 with a sponsored run to come they have been magnificent in their efforts to date.

If you would like to know more about the work of the group help raise money through sponsorship ideas or make a donation or attend any events please contact Michael Whitby 852613 or Elaine Bagshaw 853935



Solicitors LLP

Call or email
for a chat
TODAY



HAD AN ACCIDENT?

- No Win No Fee available
- Road accidents
- Work accidents
- Trip or slip
- Holiday accidents
- Hearing loss
- Industrial disease
- Professional Negligence

MOVING HOUSE?

- Buying & Selling Property
- Re-Mortgages
- Family Transfers
- Auction Packs

CALL 01706 34 33 22

e-mail: paul@a2solicitorsLLP.co.uk
 or visit www.a2solicitorsLLP.co.uk
 3 Baillie Street, Rochdale OL16 1JJ
Solicitors Regulation Authority No. 565131 www.sra.org.uk






AERIALS & SATELLITE TV

Supplied & Fitted
Extra Points - Service Calls

Call Neil on 07970 677 017

FREE ESTIMATES



get set for digital TV







Tong Lane Industrial Units

UNITS TO LET

from approx. 150ft² to 7,500ft²

- > Solid concrete floors / strip lighting
- > Self storage, design studios/offices or light industrial units from 150ft²
- > Easy terms - minimum 3 month rental
- > Secure units with roller shutter doors
- > Off street parking

For more information or to arrange a viewing please contact Catherine Cousin on

01706 853513

or email catherine.cousin@angloreacycling.com



Ashworth Energy
Energy Assessments





Does your business want to save £££ this year?

We now broker Gas, Electric, Water, phone and Data Supplies.

This is a **FREE** service no matter how big or small your business is

Call now

07581587990

ANNUAL REPORT, WHITWORTH TOWN COUNCIL

MAYOR'S OVERVIEW

Clr Madeline DeSouza, Mayor of Whitworth 2018 – 2019

This has been a truly amazing year for me, as Mayor. I have numerous events and supported many local community groups over the last 12 months. I have enjoyed chairing the meetings of the town council and thank the members of the public who have attended our meetings to raise issues or concerns.

Looking ahead to the next twelve months, Councillor Lynda Barnes will become Mayor and I wish her every success.

INITIATIVES

The Council employs the **Town Clerk**, Melanie Hearn and **Town Caretaker**, Glen Iliff who litter-picks targeted sites the length and breadth of the town, and reports issues and problems to the Clerk. The Council contracts a **Parish Lengthsman**, John Leyland, for general repairs and maintenance. All three maintain healthy attendance sheets.

The Town Council sponsor the **Whitworth community police car**, which has proved invaluable to the local constabulary. A competitive lease has been negotiated along with a partial sponsorship deal to keep the cost down for the people of Whitworth.

The **Wold War One Centenary Group** hosted an amazing weekend in November 2018. In addition, they have left a legacy in the form of the centenary bench located at Moss Side Street, Shawforth.

The Town Council has made the first steps to launching a **Whitworth in Bloom** campaign which will help to inspire a sense of pride in where we live. The competition isn't just about flowers, but community spirit – and that is something we have in abundance!

The Town Council has helped to run the consultation for a **new play area**, the project is still in the early stages but will improve the area we live in. In November, councillors invited all four local primary schools along to the council chamber for **Parliament Week**. This is a great opportunity to get ideas from the next generation and maybe inspire some budding future councillors and community champions. The Council supported **Whitworth Youth** in their plight to get access to the underused 515 centre giving them the space to run a second weekly session for the youth of our town.

The **Community Toilet Scheme** enables six local business' to allow the public free use of their toilet facilities during their normal opening hours without feeling the need to make a purchase. In return, Whitworth Town Council make a financial contribution to help them maintain their facilities to a high standard. In addition to the scheme Whitworth Town Council also pay for the cleaning and opening of the toilets at Healey Corner.

The Town Council's **website**, www.whitworth.gov.uk, is well a used asset to the Council as a one-stop-shop of Whitworth information for residents and visitors.

The **Horticultural Society** continues to do a wonderful job ensuring the town looks its blooming best. The Society works proactively with the Town, Borough and County councils, and is financially supported in part by the Town Council – a good illustration of the Council interacting with the community. The volunteers tend to flowerbeds in the memorial gardens whilst the **Allotments Working Group** tend to the planter boxes situated around the town.

ANNUAL REPORT, WHITWORTH TOWN COUNCIL

The Town Council-produced quarterly **Whitworth Valley News** magazine continues to be a very popular read, receiving editorial contributions from a wide variety of organisations and featuring 43 paying advertisers. It involves a significant amount of work for the Clerk but is very well received and ensures all in Whitworth are up-to-date with town news and developments. It is hand-delivered to all households by the Sports Council volunteers.

The Town Council works in partnership with Rossendale and Lancashire Councils and other local organisations including Lancashire Police and Green Vale Homes to provide the best possible services for the Whitworth community. To give examples, the Town Council facilitates monthly **Multi-Agency meetings**, where representatives of all the main agencies come together to tackle issues in the town.

The **Tourism and Leisure Committee** organises a large number of events annually – this past year's offer has included the Rushcart, Christmas Lights Switch On, New Year's Duck Race, St George Celebrations, Family Fun Day and the Whitworth Calendar. Additionally, the Town Council itself is responsible for organising Whitworth's Remembrance Sunday commemorations and the Community Carol Service. All these events serve to preserve and strengthen the town's identity and provide a solid sense of community and civic pride.

The **Whitworth Sports Council** continues to flourish, and plans for the 2019 (11th Annual) Sports Festival are well underway.

Since 2007, Whitworth Town Council has held **Quality Status**, a nationally recognised quality benchmark for parish and town councils. This has now been replaced by the Local Council Award Scheme, which celebrates the successes of the best local councils, and provides a framework to support these councils to improve and develop to meet their full potential.

TOWN TWINNING

Whitworth has been twinned with Kandel for 51 years and the friendship between the towns continues. Cllrs Aldred and Mellor are instrumental in keeping the twinning alive, and thanks are due to them for their continued work.

CIVIC EVENTS

2018's municipal year began as always with **Mayor-Making** held at the Riverside, followed by a joint Civic Sunday Service at St Anselms. Rev Father Chris McGrane has acted as Mayoral Chaplain this year and many thanks are offered to him for his support. As always, the Town Council-organised **Remembrance Sunday commemorations** were extremely well attended. The **Community Carol Service** at the Riverside was led by Rev Father Chris McGrane and was a very popular event; the junior band did a sterling job accompanying the carols and a joyful, festive time was had by all. The **Mayor's Civic Dinner** last month was an enjoyable evening with a Scottish ceilidh. Dignitaries from other Councils attended the event, and over £350 was raised for the Mayor's Charity Fund just on this one night!

PLANNING

As a statutory planning consultee, the Town Council comments on all Whitworth applications; Rossendale Borough Council then considers these comments when making a decision. 37 applications were considered by the Town Council over the past year.

CONCLUSION

Whitworth Town Council continues serve Whitworth well, making significant positive steps. The Council is accessible, the magazine, website and social media ensure communication with the public is efficient and simple. The Town Council will continue to provide a range of fun, family events and initiatives throughout the year, encouraging community spirit and togetherness. There will, as always, be challenges and opportunities presented over the year ahead, but the Town Council is well equipped to deal with both.

ST JOHN WITH ST MICHAEL

Some pupils visited the lovely Alice in her Nursing home in Bacup to wish her a very happy 102nd birthday!"

ASPIRATION WEEK:

Calling all parents, grandparents and friends! St John with St Michael are holding an Aspirations Week from Monday 20th May to Friday 24th May. Do you know anyone who would be willing to talk to small groups at the career's afternoon on Thursday 23rd May, 1.30pm – 3.00pm about their business, jobs (past or present) and inspire the next generation? Please contact the school office in person or email bursar@sjsm.lancs.sch.uk



SHAWFEST - FRIDAY 12TH JULY 2019

All are welcome to our fun, friendly family event. Tickets will be on sale soon. For more information please ring 01706 852614

SHAWFORTH METHODIST CHURCH:

Sundays	10.30 am	Sunday Service, everyone welcome and stay for a brew afterwards
Mondays	9.30 - 11.30am	Toddler group
Tuesdays	7pm - 9pm	Whitworth Community Choir rehearsals
	7.30pm last Tuesday in every month	Ladies Group everyone welcome
Wednesdays	9.30am to 11.30am	Toddler Group
	6.30pm - 8pm	Shotokan Karate
Thursdays	8pm last Thursday in every month	Model Flying Club
Fridays	10.30am - 12.00	Drop in for tea, coffee and toast (and a natter!) all welcome
Saturdays	11am - 1pm 3rd Saturday each month	coffee and lunches and stalls

Superintendent Minister Revd. David J Burrow Tel 01706 602882

For room hire contact Christine Tel 01706 854172 or Lois 01706 852815

LOCAL TRADES LIST

CHILDREN – EDUCATION & TUITION:

Childminder, OFSTED registered: VIKKI MEGRAM

Full and part time spaces
15-hour funded places available
Tel 01706 6530956 / vikkimegram@talktalk.net
(77 Hall Fold Whitworth OL12 8TT)

Childminder OFSTED registered level 3 qualified: GILL CHORLTON

Tel 01706 869142 / 07962190667
7 Lobden Crescent Whitworth

Private tuition, all ages: DR ADAM ANDREW

Qualified teacher with 10 years' experience
Science and maths specialist
Tel: 01706 630956 / adamandrew@talktalk.net
(77 Hall Fold, Whitworth OL12 8TT)

HEALTH & WELLBEING:

VALLEY ACUPUNCTURE

Women's Health, Fertility, Pregnancy,
General Health, Sports Injuries & Pain Relief
217 Market Street, Whitworth (clinic to rear)
Call or text: 07903 851856
E: lc@valleyacupuncture.co.uk
Visit: www.valleyacupuncture.co.uk

PROPERTY SERVICES:

CJ ROTHWELL LANDSCAPING AND DRAINAGE

cjrothwell@hotmail.com
Tel: 07846 107922
(39 Rawstron Street, Whitworth OL12 8BA)

Property Maintenance Central Heating & Boiler

Replacements (Gas Safe Registered)
JIM MELLOR PROPERTY SERVICES
Tel: 01706 854777 / 07973 421145
(35 Knowsley Crescent Shawforth OL12 8RR)

Double Glazing Repairs:

MANCHESTER DOUBLE GLAZING REPAIRS

Whitworth based, 30 years' experience, no callout charge.
Locks, handles, hinges, sealed units, drafts, leaks tel: Richard
on 017768 243081 / richard@mdgr.org

Electrical Maintenance & Installation for home & business:

PDB Electrical

Tel: 01706 860840 – 07740 825536
pdbelectrical@yahoo.co.uk
(20 Ainsdale Drive, Whitworth, OL12 8QB)

Gas Engineer (servicing, installation & repairs, kitchen & bathroom): RLH GAS & PROPERTY SERVICES (Richard Lyon-Hayes)

rlhgasandpropertyservices@yahoo.co.uk
www.rlhgas.co.uk, Gas Safe registered 531279
(33 Oak Street Shawforth OL12 8NP)

Ignite – the boiler professionals

Time for a new Boiler? Call Chris on
07896 198095
(28 Waingap View, Whitworth OL12 8QD)

High power pressure washing (paths & patio cleaning driveways & tarmacking, decking & cobbles, graffiti removal, garden stone walls, moss & algae removal, plus window cleaning: SEAN BRADLEY

Tel: 01706 879928 / 07773 798078
Seanbrad09@gmail.com
(28 Douglas Road, Bacup, OL13 9PR)

Painting & Decorating: ANDREW ROBINSON

Tel: 01706 639709 / 07967 203484
(4 Meadow Head Avenue Whitworth OL12 8TH)

Painter and Decorator: PETER RICHARDSON

Tel: 01706 854729 mob 07957 758928
Over 30 years' experience, no job too small
(9 Heatherlands, Whitworth, OL12 8NW)

Plumbing & Heating - LPG (Gas Safe Reg) PHIL JONES

Tel: 07976 886926 / philip.jones1@btinternet.com
(4 The Hedgerows, Whitworth, OL12 8AW)

Window Cleaning – Pure Water Fed Cleaning System (hard to reach windows) – UPVC Cleaning

JOHN LEYLAND Tel: 07790 771368
(7 Daniel Street, Whitworth, OL12 8BX)

Window & UPVC Cleaning – Carpet & Upholstery Cleaning Jet Washing: OPENREACH

Tel: 0800 612 7679 / openreach-wcs@tiscali.co.uk
www.openreach-wcs.co.uk
(35 Westgate, Whitworth, OL12 8UW)

List your business for £5.21 + VAT per edition!

01706 852018 / info@whitworth.gov.uk

This community magazine is produced by Whitworth Town Council. It is distributed to 3,900 properties in Whitworth four times a year.

Editorial content is carried free of charge; advertising rates can be provided upon request.

Whitworth Town Council cannot be held responsible for the accuracy of any information provided for submission by outside organisations, the quality of service offered by advertisers, or the content of adverts within the magazine.

USEFUL CONTACTS

WHITWORTH TOWN COUNCILLORS:

FACIT & SHAWFORTH WARD:

Tom Aldred (Labour): 01706 852183 atomaldred@aol.com

Lynda Barnes (Conservative): 01706 853635

07944 116385 • cllrlyndabarnes@hotmail.co.uk

Jim Mellor (Conservative): 01706 853479 • 07973 421145

jim.mellor47@btinternet.com

Donna Nutt (Community First): 07532 144924

Rachael Barker (Independent): 07821 248511

cllrachaelbarker@gmail.com

Janet Whitehead (Independent): 07795 577647

cllrjanetwhitehead@gmail.com

HEALEY & WHITWORTH WARD:

Please visit www.whitworth.gov.uk after 2 nd May for a list of the Healey and Whitworth ward councillors and their contact details

ROSSENDALE BOROUGH COUNCILLORS:

FACIT & SHAWFORTH WARD:

Tom Aldred

Second councillor known after the election on 2nd May

HEALEY & WHITWORTH WARD:

Alan Neal

Second councillor known after the election on 2nd May

(See above for contact details)

WHITWORTH TOWN COUNCIL OFFICES:

Civil Hall, Market Street

Whitworth, OL12 8DP

Contact: Melanie Hearn, **The Town Clerk**

tel: 01706 852018

email: info@whitworth.gov.uk

www.whitworth.gov.uk

Office hours: Mon - Fri, 9am - 2.30pm

LANCASHIRE COUNTY COUNCILLOR:

Peter Steen

07703 832 156

peter.steen@lancashire.gov.uk

MEMBER OF PARLIAMENT:

Jake Berry MP

0207 210 5000 (House of Commons)

01706 215547 (Constituency office)

jake.berry.mp@parliament.uk • www.jakeberry.org

WHITWORTH TOWN COUNCIL MEETING DATES:

Thurs 16 May, Thurs 6 June, Thurs 27 June, Thurs 11 July, Thurs 25 July, Thurs 5 Sept, Thurs 19 Sept

All meetings take place at 7.30pm in the Council Chamber at the Riverside; members of the public are welcome.

OTHER USEFUL CONTACTS:

Community Police Officer PCSO 7356 Heidi Kirkbright: to speak to Heidi please call 07904 899086, or to report a non-urgent crime or incident, please dial 101 or visit www.lancashire.police.uk/contact-us/how-do-i-report-a-crime
For emergencies only, dial 999.

Together Housing: 0300 555 5556 (general enquiries and to book a face to face appointment in their office at Rawtenstall, please note the office is appointment only) Michele Heys, Whitworth Officer

Whitworth Youth: Mondays 6.30 – 9pm at the scout hut, Tuesdays 3.15 – 4.30pm at 515 centre, Thursday 6.30 - 9pm at 515
• www.whitworthyouth.co.uk

Homestart: 01706 214621 • Emma@homestartbrb.co.uk • www.home-start.org.uk

Carers Link Lancashire: 01254 387444 • info@carerslink.net • www.eastlancscarers.org.uk

Citizens Advice Rossendale: 03444 889622

The Samaritans: 01706 830999 • (Freephone) 116 123

Lancashire County Council: 0300 123 6701 (general enquiries) www.lancashire.gov.uk • Highways 0300 123 6780 or email highways@lancashire.gov.uk • out of hours social care emergencies (5pm – 8.45am) 0300 123 6720

Rossendale Borough Council: 01706 217777 (general enquiries) • 0300 222 5944 (revenues and benefits)
0300 222 5946 (out of hours emergencies) • www.rossendale.gov.uk