

# Whitworth VALLEY NEWS



PRODUCED BY  
**Whitworth**  
Town Council

COUNCIL UPDATES

## SANTA EXPRESS

ROUTE AND TIMINGS INSIDE

SPONSOR A DUCK



[WWW.WHITWORTH.GOV.UK/VALLEY-NEWS-MAGAZINE](http://WWW.WHITWORTH.GOV.UK/VALLEY-NEWS-MAGAZINE)



## NOW OPEN 7 DAYS

**MON - FRI 12:00PM TIL LATE**  
**SATURDAY - 9:30AM TIL LATE**  
**SUNDAY - 9:30AM - 6PM**

**CELEBRATE HERE AT BASIL'S**

Our venue is perfect for celebrating. Whether it be for a Birthday, Anniversary, Christening, Baby Shower or Gender Reveal. We've got you covered. Tailored Packages to suit your budget and Special Day.

**Weddings**  
Contact us for more information on exclusive venue hire.

**Funerals**  
Private Functions available to book for Funerals with Catering Packages.

**External Catering**  
We can Cater for external events too. Buffets, Sandwich Platters and Grazing Platters.

Takeaway  
now available  
with delivery




**CALL US**  
**01706 344896**

264 Market Street  
 Whitworth  
 OL12 8PW

 @BasilsWhitworth  
 @thedoghauswhitworth

## THE DOGHAUS

### WHITWORTH'S VERY OWN COCKTAIL BAR

With a team of trained mixologists,  
let us craft you the perfect drink

**LARGE COCKTAIL SELECTION**  
 Wines, Craft Ales, Gin Bar,  
 Draught Lager and Cider.

•

**PECKISH**  
 Small Plates, Burgers and  
 Pizzas available to order.

•

**LIVE MUSIC**  
 Follow the Facebook page  
 for the latest information.

•

**PUB QUIZ**  
 1<sup>st</sup> Thursday of every month.  
 Starts at 8.30pm.

•

**VENUE HIRE**  
 Available for private hire.  
 Catering packages available.

**Open Thursday and Friday - 5pm til late**  
**Saturday 2pm til late Sunday - 12pm til 8pm**

Facit Garden Centre

*Premium*

*Christmas Trees*

....Get a REAL tree this Christmas plus  
 Wreaths and Holy!

*Sale  
starts  
26th  
Nov*



Open 7 days a week

07532144924

# VILLAGE CARS

## and

# WHITWORTH TAXIS



**01706 854545**

**01706 854343**

**07592 953822**

# MESSAGE FROM THE MAYOR



*Councillor Maureen Jones, Mayor of Whitworth with Seán Ruane and Karen Ruane after her recent fundraising concert.*

## Dear Residents and readers,

I have had an enjoyable and busy year representing Whitworth as Mayor so far. I am honoured to have the privilege to represent Whitworth at our Remembrance Sunday service on the 14th November. It will be nice to be able to meet in person this year. I would encourage everyone to join me to pay your respects at the cenotaph. Thank-you to our wonderful volunteers who are going to assist the road closure to make it possible.

Thank-you to everyone who came along to my charity event, 'An Evening with Seán Ruane and Friends' on the 16th October, we had a fantastic time and managed to raise £1450 for the Mayoral Charity Fund. This would not have been possible without the support of Seán Ruane and I want to say a very special thank-you to him and all his wonderful friends who performed on the evening.

All monies raised in my charity fund will be shared between local groups who work with our young people in Whitworth at the end of my Mayoral year in May 2022.

Looking forward to the next few months, please save the date for the Christmas Santa Express on Saturday 18th and Sunday 19th December and I hope you will come along to the Whitworth Community Carol Service on Monday 13th December. I will be hosting another event in the new year so keep an eye out on the next issue of the Whitworth Valley News for more details.

With best wishes,

Cllr Maureen Jones, Mayor of Whitworth

**SPONSOR A DUCK NOW!**

**NEW YEARS DAY DUCK RACE**

Cowm Res, Saturday 1st January 2022 at 1pm

**Cash prizes of £100, £75, £50 and £10**

**Sponsor a duck for £1 from**

[www.whitworth.gov.uk/events/Annual\\_New\\_Years\\_Day\\_Duck\\_Race](http://www.whitworth.gov.uk/events/Annual_New_Years_Day_Duck_Race)  
and local outlets

ALL PROCEEDS RAISED GO TO COMMUNITY EVENTS IN WHITWORTH

**WHITWORTH**  
TOURISM & LEISURE COMMITTEE



BRGS Learn for excellence  
SIXTH FORM

Your future starts here  
at BRGS Sixth Form

# Open Event

Wednesday 10th November, 6-8pm

Find out more about our 6th Form at  
[www.brgs.org.uk/sixth-form](http://www.brgs.org.uk/sixth-form)

## New Year's Day Duck Race

1st Prize £100  
2nd Prize £75  
3rd Prize £50  
*(last duck over the line wins a tenner!)*

Sponsor a duck now for £1  
**ON SALE HERE!**

All proceeds to tourism and leisure events in Whitworth  
For more info contact 01706 852019 (town council)

 Whitworth  
Town Council

 WHITWORTH  
TOURISM & LEISURE COMMITTEE

 Sponsor me  
£1

# HOUSEWORX



Washing and ironing  
Dry cleaning  
Alterations and repairs

Commercial and  
domestic cleaning

COLLECTION AND DELIVERY AVAILABLE

**07908 242 294**

**01706 854379**

539 Market Street, Whitworth, OL12 8QW



There have been quite a few changes at Whitworth Town Council during the last 12 months, including three new Town Councillors. This seemed like a good opportunity for them to introduce themselves to residents.

Their contact details are on the back page of the magazine if you want to contact them.

---

### **COUNCILLOR STELLA TROUGHTON**

Hello, my name is Stella, I have had the privilege of serving as an independent Town Councillor for Healey and Whitworth ward for just over 12 months.

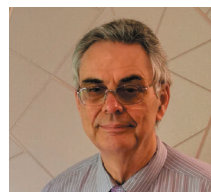
I have lived in the village for 38 years, I have been married to a local lad for 37. I am passionate about the village and its people, I also am a Whitworth Tourism and Leisure Committee volunteer, helping to make our village the best it can be. I thoroughly enjoy my work, serving the community, I look forward to doing so in the years ahead.

---



### **COUNCILLOR MIKE ROYDS**

Hello everyone, my name is Mike Royds and I represent the Facit & Shawforth ward as part of Whitworth Town Council. I have been a resident of Whitworth for almost 50 years, marrying of course a Whitworth girl. My wife was born right here in Whitworth as were our three children, all attending Tonacliffe School (where my wife has been a volunteer for over 25 years) and later, Whitworth High School. I am now fortunate enough to work more locally, sometimes even from home and so now felt it was my turn to give something back to the community in any way I could so when the opportunity to join Whitworth Town Council came, I didn't hesitate to put myself forward.



I am still new to being a councillor, but I am pleased to say that the support of all the other Councillors and our hard-working Town Clerk has been first class.

Please do contact me with any concerns you may have or any suggestions for making Whitworth an even better place to live, email initially works best for me as my job as a tutor in transport means I have limited access to a phone during the day.

---

### **COUNCILLOR KIM OLAOLU**

I would like to introduce myself. My name is Kim and I have recently become one of your local councillors, for the Facit and Shawforth ward. I was born and raised in Shawforth and I've lived in Whitworth most of my life. I have worked in our local community for many years and I'm passionate about supporting local people and our environment. We all naturally have a range of skills and abilities and when we work as a collective, we can achieve so much more together and serve our community better. As part of Whitworth Town Council, we will bring local issues to the attention of the council and help it make decisions on your behalf. Always striving to deliver improvements and positive changes in your area. I am pleased to be part of that process, as one of your local councillors. Thank you



# Daytona

## Driving School



Complete beginners:  
first 2 hour lesson  
completely **FREE!**

**DARREN LAWLER, ADI**

- . Local Whitworth Instructor
- . Pass plus courses
- . Motorway and refresher lessons

**07814 556 985**

darrenjlawler@hotmail.co.uk  
www.daytonadrivingschool.co.uk



- ▶ Fitness suite
- ▶ Swimming
- ▶ Aqua Tai Chi
- ▶ Swimming lessons
- ▶ Parent & baby sessions

**JOIN  
NOW!**

Contact us for more information:

**T: 01706 852694**

**www.whitworthleisure.co.uk**

**ROSSENDALE PET  
CREMATORIAL**  
and MEMORIAL GARDENS



*Compassion & dedication when it matters most*

We offer a gentle, kind and sensitive cremation service for your horse, pony or donkey. Upon receiving your call we will discuss your wishes with you, providing support and advice, to ensure a personal and fitting farewell is arranged.

**Call Weekdays**

01706 213 810

**Call Evenings & Weekends**

07387 092 919

For full details & service availability visit  
**www.rossendalepetcrem.co.uk**



## CHRISTMAS TREES ON BRACKETS

Volunteer, Les has been busy again this year arranging to install Christmas Trees and brackets around the town. Thank-you to PH welding for their support and donation of steel to make extra brackets and thank-you to Steve Parker for his time making them. This year Les has taken on a bumper number of trees and had to contract out the fitting to make the task possible.

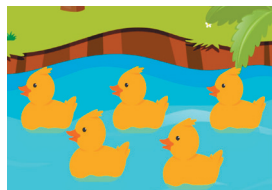
The idea behind the project is to bring some extra light to Whitworth and residents can support this by putting up their own trees and lights at home to get us all into the Christmas spirit.



Les and Steve spent hours making new brackets using steel donated by PH Welding

## READY, STEADY – QUACK!

**A staple in the Whitworth calendar, the Annual New Year's Day Duck Race returns in 2022.** Taking place at 1pm at Cowm Reservoir, it has been known to draw crowds of 500 spectators. Last year the committee ran the race virtually, which was a tremendous success, but they will be glad to be able to race again in person and welcome in the New Year and raise vital funds towards events and services for the local community.



For those unfamiliar with the concept, you 'sponsor' a numbered yellow rubber duck for £1, which is then entered into the race. There are cash prizes for first, second and third place of £100, £75 and £50 and a tenner for the last duck. Winners will be notified on the day and also announced on facebook. This year Bubbles and Brews will be warming up spectators with delicious hot drinks.

You can sponsor a duck now at the Whitworth Council Office, The Ashcroft (Civic Hall) and many other local businesses until the week before the event. You can also purchase ducks online in multiples of five from [www.whitworth.gov.uk/events/Annual\\_New\\_Years\\_Day\\_Duck\\_Race](http://www.whitworth.gov.uk/events/Annual_New_Years_Day_Duck_Race)

## WHITWORTH VOLUNTEERS HOST WREATH MAKING WORKSHOP

The Tourism and Leisure Committee have been getting in the Christmas spirit planning the Christmas Celebrations. This year they are hosting their first ever wreath making workshop. The idea was the brainchild of volunteer member Linda Parker to recycle the Christmas tree offcuts the group produce.



The workshop takes place on Saturday 4th December at Hallfold Church Hall, a morning session from 9am to 12pm and an afternoon session 1pm until 4pm. Everything will be provided to make a traditional, natural wreath. Guests will receive mulled wine and a mince pie and be entertained by Christmas tunes while they craft. Everyone is welcome to bring along decorations they wish to add to their wreath to customise theirs to their own colour scheme. Tickets are expected to sell out quickly for this popular event.

## SANTA EXPRESS COMES TO WHITWORTH

Since Santa Express was such a huge success last year the committee have decided it will return to the streets of Whitworth for a second year running! Father Christmas will be travelling through town in a custom-built sleigh between 5pm and 7pm on Saturday the 18th and Sunday the 19th of December. He will be sledding between Broadley and Shawforth and calling at most of the residential areas on the way driving slowly to allow families to wave as he passes by. It would be impossible to cover every single street, but the volunteers have worked hard to ensure that you won't have far to go to see him drive by.

Residents are encouraged to come out and meet Father Christmas as he makes short stops at allocated points to allow children to collect a bag of sweets as a Christmas treat. The sleigh will stop at local businesses, including Basils, the Red Lion and The Oxford as well as Cowm Reservoir where the Whitworth Waterski Centre will be decked in Christmas Lights and Bubbles and Brews will be warming people up with delicious hot drinks to go along with the festivities.

Father Christmas wants to see everyone out and waving this year joining in on the festivities after a difficult 18 months. He would love to see everyone's Christmas Lights and decorations cheering up the valley. Please send in any photos or videos of the event to whitworthtlc@gmail.com or post them on social media with the hashtag #whitworthsantaexpress.

Finally, for anyone wanting to track Father Christmas from stop to stop on either day please scan the QR code to download the FollowMee app.

Merry Christmas!

**Santa Express**

Saturday 18th December

5pm Tesco Express

5:05pm Basils

5:25pm Orama layby

5:40pm Cowm Res

5:50pm Halfway House

6pm Barley View

6:05pm Leavengreave Court / Valley View

6:10pm Knowsley Crescent

6:30pm Britannia ( as far as New Line)

6:45pm Facit Fold

Download the FollowMee app  
and track us on the day!!



Sunday 19th December

5:15pm Red Lion

5:25pm Waingap View

5:30pm Coppice Drive

5:40pm Tonacliffe Way

5:50pm The Oxford

6:10pm Riddiough / Masseycroft

6:20pm Wallbank

6:45pm Cricket Club





**Nibbles**  
cafe  
*on the Spodden*

Freshly made sandwiches,  
panini's, homemade pies, cakes,  
beverages and more served  
with a smile. Open 7 days!  
*Eat in or takeaway.*

Telephone orders welcome

**T.01706 853311**

MasterCard VISA AMERICAN EXPRESS Apple Pay

597 Market Street,  
Whitworth, Rochdale OL12 8QS



**Joshua Law**  
Traditional Family



**Butchers...**

- Cooked Meats (prepared & cooked on the premises)
- Bury Black Pudding
- Quality Steaks (matured for at least 21 days)
- Finest Sausages
- Finest English Spring Lamb
- Poultry, Bacon and Game
- Home Made Ready Meals (changed weekly)
- New Special Offers Every Week

**...& Bakers**

Freshly baked bread, pies and sandwich orders!

TELEPHONE ORDERS WELCOME  
FREE HOME DELIVERY

**Opening Hours:**  
Mon-Fri: 7.30am-5.30pm  
Sat: 7.30am-1.30pm

**Tel:**  
**01706 852313**

739 Market St., Facit, Whitworth, OL12 8LD



**SAMBA DANCE AND FITNESS**

**Freestyle / Disco**  
**Street / Hip Hop**  
**Latin American**  
**Ballet & Tap**  
**Ballroom**  
**Cheerleading**  
**Breakdance**  
**Drama**

613 Market Street,  
Whitworth, OL12 8DY  
☎ **01706 854960**  
www.sambadanceandfitness.co.uk

- **Private Lessons**
- **Competitions & Exams**
- **or Just for Fun**


**Also a Range of Fitness Classes for all ages**



**Whitworth Travel**  
Travel in Style

- 24 / 7 with advanced booking
- Meet and greet
- Free waiting time so no need to worry if your flight is delayed
- Flight tracking
- Fully air conditioned
- Male and female drivers
- Cars and 8 seater minibus
- Reliable, friendly and efficient service

**Tel: 01706 854 324**  
**Mob: 07413 467 486**  
[www.whitworthtravel.com](http://www.whitworthtravel.com)



## WHITWORTH COMMUNITY CHOIR HAS COME TOGETHER AGAIN AFTER THE PANDEMIC!!

Right now is a perfect time to join, after eighteen months of no rehearsals everybody is at square one again. The choir is proud to boast the majority of members are home-grown and enjoy performing to the local community. Men are still in short supply and are seriously outnumbered by the ladies - tenors and basses needed ... go on lads, go and support your fellow men, a warm welcome is guaranteed.



It is more than just a choir providing a positive activity for anyone over the age of 18 to make new friends, be involved in the community and more importantly.... sing!! There are no auditions, just turn up!

The choir rehearses every Tuesday at Shawforth Chapel from 7pm. Although they rehearse at church it is a community choir and not a church choir! If you want any more information or a chat about it contact Gill Pearson on 07779 713595 or email whitworthcommunitychoir@gmail.com

---

## SPRINGHILL HOSPICE CHRISTMAS TREE COLLECTION TO RETURN IN 2022

The Springhill Hospice Christmas Tree Collection was a big hit with our local supporters earlier last January and due to popular demand the hospice will be returning the service from the 7th- 9th January 2022.

Not only is the tree collection a great opportunity to recycle your tree once the festivities are over, as the chippings from all the trees collected are then used within the Hospice gardens.

Vicki Murray, Corporate and Partnerships Fundraiser for Springhill Hospice, who is organising the event, says, 'The tree collection that we did earlier in the year was a massive success with people locally.

It was a great opportunity for them to support the Hospice and it meant that their trees were being recycled instead of going to landfill which I'm sure a lot of people appreciate.'

For more information about how you can book a slot to have your Christmas tree collected by Springhill Hospice you can visit [springhill.org.uk/events/christmas-tree-collection](https://springhill.org.uk/events/christmas-tree-collection) or call 01706 641790.



Mike Brennan,  
The Emporium Shop  
Manager, collecting trees  
back in January

---

## MINIML REFILLS AVAILABLE AT FACIT GARDEN CENTRE

Miniml have set out to change the way people consume cleaning products and think about their waste. They are not just another natural cleaning brand but a movement to do more with less offering people a zero waste, closed loop solution to all their cleaning, laundry and personal care needs to ensure that every bottle we sell gets re-used time and time again. Miniml refills had been available in Whitworth at The Bug for some time but now they have relocated to Facit Garden Centre, Whitworth. Open Friday to Sunday all day, call up and bring a bottle to test it out. Join on the journey to make the world a cleaner, greener place to live! For more information contact Donna on 07532 144924.



# Stop, Challenge, Protect.

**Stop.** Taking a moment to stop and think before parting with your money or information could keep you safe.

**Challenge.** Is this person really who they say they are? Could their number be spoofed? It's ok to refuse any requests for financial or personal details.

**Protect.** Contact your bank immediately if you think you've fallen for a scam and report it to Action Fraud. If you're in Scotland, you can report it to Police Scotland on 101.

**ActionFraud**  
Report your crime. Stop the crime.  
\*\*\*actionfraud.police.uk\*\*\*



#FraudFreeXmas



## Specialist Dementia Care Home

Overlooking the Rossendale Valley, our Willow Lane community provides a safe, secure and responsive environment for the effective care of people living with dementia. With relaxing décor, bespoke features and dedicated staff – we have created a community where our residents can feel at home, not in a home.

### Our home offers:

- ✓ Purpose-built Dementia care setting
- ✓ 14 en-suite rooms
- ✓ Nurse call sensors
- ✓ Light assisted guidance
- ✓ Dedicated activities co-ordinator
- ✓ Communal areas
- ✓ Outside space & garden
- ✓ Higher staff ratios
- ✓ In-house cooks

01706 659 917

enquiries@whitworthcare.org.uk



(out of 10)

carehome.co.uk

**whitworth care**  
A Whitworth Group Service

BACUP  
ROYAL COURT THEATRE  
MULTI AWARD WINNING THEATRE GROUP



*The Fairy Godmother of all  
Pantomimes*

**[bacuproyalcourttheatre.com](http://bacuproyalcourttheatre.com)**

**Or call in at Wishes Galore, Rochdale Road, Bacup**



## SUPPORT WORKER VACANCY DAY WORK AND NIGHT SHIFTS

Healey Care Limited is a well-established privately owned family business who support adults with learning difficulties, autism and physical disabilities. They offer a wide range of person-centered support through residential care homes, supported tenancies, respite and day support within Rochdale, Whitworth and Rossendale.



This past year has been particularly challenging for the Company due to the COVID pandemic. However, in line with Government guidelines their robust Infection Control measures have been very successful in keeping both staff and service users safe during difficult times. Staff have been able to maintain and enhance activities for the service users which have been met with great enthusiasm in all settings.

Healey care are now looking to recruit additional staff to help maintain this dynamic service.

They offer a permanent contract (day and night shifts with varying hours), a comprehensive training programme, 28-day holiday entitlement, pension and above all a safe and secure working environment. If you think you have got what it takes and are a forward-thinking go-getting person, who welcomes a challenge, please contact; [becky@healeycareltd.co.uk](mailto:becky@healeycareltd.co.uk) or call 01706 854668 or 07716 721669 between the hours of 10am & 2pm

---

## ANGLO NOW RECYCLE SURPLUS CLOTHING

Thanks to the skills of the team at Anglo, the folks at INNOVATE UK and friend Jonathan Powell- Anglo have had the ideas and financial support to modify their recycling line to now handle clothing recycling commercially.



The clothing in the picture is the stuff the charity shops cant sell-. Anglo collect it from Manchester, less than 20 miles away, and then convert it into the grey fibres in the background. They then use their non-woven needling skills on site to make it into something like an underlay for the likes of the big DIY chains in the UK and Europe. Anglo used to have to bring the fibre in on a truck 800km from the south of France- so it is a bit of a win win!!

## WALKING IN WHITWORTH

Thanks are due to the Co-op, the Post Office and Josh Law's Butchers for enabling so many people to get hold of the Sports Council's free packs of Walking Whitworth leaflets. Now many more shops and other establishments across Whitworth have small stocks of them (just ask) and, courtesy of the National Lottery Community Fund, managed to reprint the pack of shorter Strolling Whitworth leaflets, so there should now be something to suit the walking capacity of many more people.



All the walks should be available soon via a website called Walk Rossendale, but Rossendale Leisure Trust haven't quite got that up and running yet, so, for the moment, try <https://whitworth-sports-council.co.uk/>

---

## DOES ANYONE OUT THERE FANCY DELIVERING THE WHITWORTH VALLEY NEWS?

This magazine is pushed through the letterbox of every household in Whitworth by a crack squad of about two dozen volunteers, who each deliver about 150 copies, which takes maybe an hour and a half, depending on the round. They do their duty for love (and the small amount that it earns for the Sports Council, which helps them to pay for the Sports Festival) four times a year. Sometimes illness, injury and holidays mean some volunteers have to double up, so it would be nice to have a few additional kind people to help out. Flood your offers to Jo Furtado – 07813 180748 or [jofurtado@hotmail.co.uk](mailto:jofurtado@hotmail.co.uk).

---

## WHITWORTH COMMUNITY GALLERIES

**The Gallery at the Baths and the Gallery at the Library** are up and running again. If you are a Whitworth resident or a Whitworth organisation and you would like to exhibit photos or artwork or a combination, here's how to go about it: 1. Pop into the Leisure Centre and/or the Library and get a sense of scope and what's possible and what's not. 2. If you want to be on board, or even if you're vaguely interested but are not sure, contact Jo Furtado on 07813 180748 or [jofurtado@hotmail.co.uk](mailto:jofurtado@hotmail.co.uk) and he'll answer your questions, talk over details and, ideally, sort you out a slot.

Currently showing at the Leisure Centre is a photographic display by the Over The Tops walking group, to be followed from November 19 by artwork from Our Lady and St Anselm Primary School, then from January 7 artwork from Tonacliffe Primary School, and from the end of January pen-and-ink artwork featuring Whitworth locations by Peter Williams.

The Library currently houses original artwork from the Walking Whitworth leaflets (and a display about Whitworth Community Choir). Over The Tops will move in on November 19, followed by St Anselm's on January 7 and Tonacliffe at the end of January.

  
**THE ASHCROFT**  
FOOD • DRINK • ENTERTAINMENT

# Save the Dates

Sunday 28th November - Christmas markets  
Sunday 12th December - Afternoon tea with santa  
Friday 17th December - Christmas party night  
Saturday 18th December - Christmas party night  
Sunday 19th December - Breakfast with santa  
Friday 31st December - New years eve party!

☎ 01706 854130    📍 661 Market St, Whitworth, Rochdale OL12 8DP

## Care visits at home

*We care passionately*

For many people the questions about care don't arise until suddenly, there is a need.

Home care with Bluebird Care can be anything from a 30 minute care visit to 24 hours live in care, supporting you to remain as independent as possible, living the lifestyle you choose.



Call and talk to one of our friendly professionals today:



**01706 759 933**

[bluebirdcare.co.uk/rochdale](http://bluebirdcare.co.uk/rochdale)  
[rochdale@bluebirdcare.co.uk](mailto:rochdale@bluebirdcare.co.uk)

*We are independently regulated*

  
**Bubbles & Brews**  
**COFFEE AND GIN BAR**

 **Santa is coming to visit**  
on Saturday 18<sup>th</sup> December  
5:40pm  
come & join us for hot drinks

  
**New Year's Day**

We'll be serving brandy coffees, mulled wine and other hot drinks  
11am – 3pm 



**AVAILABLE TO HIRE FOR PRIVATE FUNCTIONS**  
**TEL: 07734174067** 

We would like to thank everyone for their continued support throughout 2021  
Wishing you all a Merry Christmas and a Happy New Year

  
**Lords**  
**THE CATERERS**  
01706 853251

## Having a party or a get-together?

We have a wide range of menus available (including our famous potato pie!) for collection, delivery or with service

**Official caterer on the East Lancs steam train, Bury: 'Dining with Distinction'** 

Call us now for a quote!  
**01706 853251**

[www.lordscaterers.co.uk](http://www.lordscaterers.co.uk)  
2 Spring Bank, Mills Street, Whitworth, OL12 8QP  
(directly behind former premises)





**Solicitors LLP**

Call or email  
for a chat  
**TODAY**



## HAD AN ACCIDENT?

- No Win No Fee available
- Road accidents
- Work accidents
- Trip or slip
- Holiday accidents
- Hearing loss
- Industrial disease
- Professional Negligence

## MOVING HOUSE?

- Buying & Selling Property
- Re-Mortgages
- Family Transfers
- Auction Packs

### CALL 01706 34 33 22

e-mail: [paul@a2solicitorsLLP.co.uk](mailto:paul@a2solicitorsLLP.co.uk)  
 or visit [www.a2solicitorsLLP.co.uk](http://www.a2solicitorsLLP.co.uk)  
 3 Baillie Street, Rochdale OL16 1JJ  
 Solicitors Regulation Authority No. 565131 [www.sra.org.uk](http://www.sra.org.uk)








**Ashworth Energy**  
Energy Assessments





## Does your business want to save £££ this year?

**We now broker Gas, Electric,  
Water, phone and Data Supplies.**

This is a **FREE** service no matter  
how big or small your business is

**Call now**

# 07581587990

**WE SPECIALISE  
AND CATER FOR  
YOUR NEEDS**



**B2B**  
INDEPENDENT LIVING

B2B ARE COMMITTED TO SAFEGUARDING ALL OUR CLIENTS  
OUR CARERS HOLD A VALID DBS POLICE CHECK

- Meal Preparation • Companionship •
- Funeral Arrangements • Gardening •
- Housework • Help with Medication •
- Waking Nights • Trips Out • Personal Care •

01706 751 599 | [www.b2bindependentliving.co.uk](http://www.b2bindependentliving.co.uk)  
[clareb2bindependentliving@outlook.com](mailto:clareb2bindependentliving@outlook.com)



## Sunnyside Rest Home & Sunnybank Day Centre

- ♦ offices to let
- ♦ meeting room
- ♦ private functions
- ♦ cafe daily 10.30am—3pm

Look out for afternoon teas  
and lots of activities

# 01706 344292

[clareb2bindependentliving@outlook.com](mailto:clareb2bindependentliving@outlook.com)  
**Market Street, Whitworth OL12 8QL**



## YET ANOTHER TWO CROSSWORDS FOR THE PRICE OF ONE!

The same grid for both. The same answers for both. Two ways of getting the answers – the first set of clues are cryptic, the second set regular. . A location in an older part of Whitworth is the two-word answer to 3/18 Down; and 9/8 Across and 19/16 Across are annual Whitworth traditions – and that's all you're getting by way of clue for those!

Answers on page 31

### CRYPTIC CLUES

#### ACROSS

- 1 Show-off plant parts for photo-op? (10)
- 7 Eastern and northern thunder. Journalist joined. (8)
- 10 Bad weather ruins motorcycle race. Need the van? (7)
- 12 1330: Flat Ena hops badly (4,4,3)
- 14 Roald Dahl initially created this mighty rotten stupid tasteless waspish idiot too (3,4)
- 20 80% of Egyptian temple has amassed debts: good job I adore my fabulous wife (8)
- 21 At 2200: terpsichory (10)

#### DOWN

- 1 More gorgeous special clothing, but not on you! (5)
- 2 version of Saul depends on short arrow (of desire?) (7)
- 4 Below us, go east – no heavy traffic (8)
- 5 SNo taxi returning for pigs (5))
- 6 You and I get involved with confused Serb, and show the mark (6)
- 11 Small bird lands in seconds, then flies east – that's her skill (8)
- 12 Beguiled, lost head, hurt (6)
- 13 Eggs into mix- applause! (7)
- 15 Pill (one blood-group swapped for another) turns into house-sign (5)
- 17 Eel squirms, swallows German you head-first, to give the slip (4)

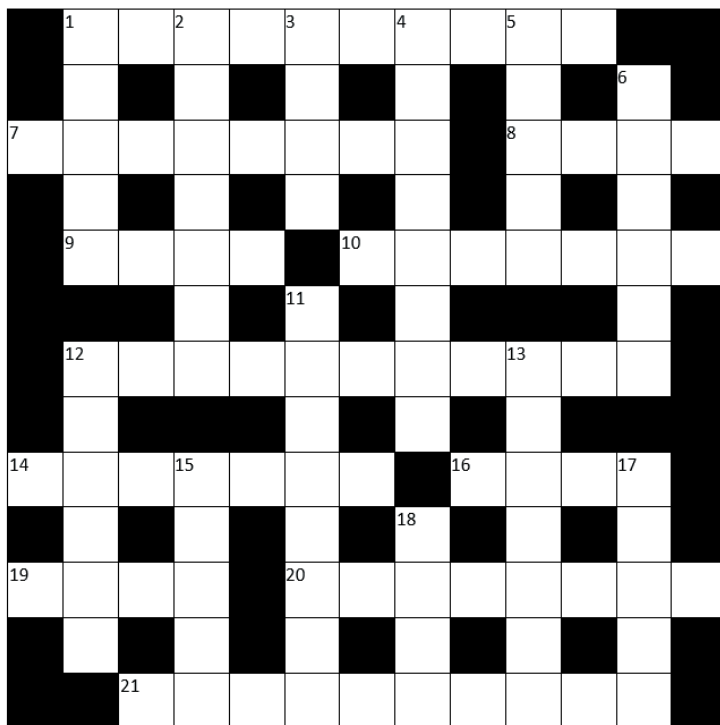
### REGULAR CLUES

#### ACROSS

- 1 Photographers may use them (10)
- 7 Signed up (8)
- 10 Sic \_\_\_\_\_ gloria mundi (or van!) (7)
- 12 90 mins before traditional kick-off time (4,4,3)
- 14 Dahl's nasty, foolish anti-heroine (3,4)
- 20 Excessively fond of one's wife (8)
- 21 The number who turn up (10)

#### DOWN

- 1 More exquisite (5)
- 2 Process of getting emotional (7)
- 4 Neglect? (8)
- 5 Butty staple (5)
- 6 Dark mark on skin (6)
- 11 Talent (8)
- 12 Injured (6)
- 13 Sometimes people stand for this (7)
- 15 For rent (5)
- 17 Escape (4)



# Infinite Reality

VIRTUAL REALITY EXPERIENCES



**Something for everyone  
any age, gamer or not!**

5 Market Street, Bacup  
Contact Jordan 07805 311134



**InfiniteReality.vr**

# RT FENCING

**Rear of 307a Market Street, Whitworth**

**Rochdale, Lancashire, OL12 8PW**

*You will find us opposite Basils Restaurant*

Telephone **01706 650829 or 07966846638**

Email **sales@rtfencing.co.uk**

Visit our web shop **www.rtfencing.co.uk**

We offer fencing installation service, with all panels manufactured in house. We supply timber products, fence panels, concrete products, decking and gates to domestic and trade customers at very competitive prices.

# AV Online



**Home Cinema and  
Hi-Fi Specialists**

**www.audiovisualonline.co.uk**

**BACUP SHOWROOM**



Unit 4 The Sidings, Bacup, OL13 9RW

# The Window And Door Outlet

**www.TWADO.co.uk**

**UPVC & ALUMINIUM**

**WINDOWS & DOORS**

**COMPOSITE DOORS**

**BIFOLD DOORS**

**SEALED UNITS**

**REPAIRS**

**Open to the trade and public with  
GENUINE trade pricing**

**20+ years experience and  
no pressure sales**

**Tel: 01254 433550**

**Email: sales@TWADO.co.uk**

**Facebook: The Window & Door Outlet Ltd**

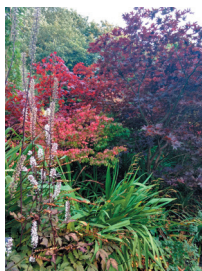
**www.TWADO.co.uk**

## WHAT HAPPENS IN WINTER TO WHITWORTH IN BLOOM?

The hardy volunteers are still out in force planting bulbs and winter brightness about the town. The regular volunteers were joined by families during half-term for a 'Bulbs, Brew and Biscuits' morning when the 1000 spring bulbs from Rossendale Borough Council were planted. In addition to this, with monies from the Welcome Back Fund (a European Regional Development funding initiative) providing supplies of plants and compost from Facit Garden Centre, there is winter colour in the form of pansies and violas which should last until the bulbs push through.

The group of volunteers are delighted that the judges awarded them a Silver Gilt medal in 2021, an improvement from the Silver medal they were awarded in 2019.

If you would like to become a member of this volunteer group, please contact 07904 130206. You don't need to be a Monty Don to join, just a bit of free time and some enthusiasm!



---

## MAKING YOUR ROADS SAFER

Lancashire County Council's highways maintenance service are working hard to improve your roads but they need your help. Last year, the team fixed almost 40,000 potholes and repaired 3,300 faults on street lights that have caused a light to be out. But with 4,600 miles of highways and 5,300 miles of footways to check and maintain, it's vital for people to let them know if they spot any problems between their inspections.

Members of the public can report a highway fault online including potholes, street lights, traffic lights and broken signs. It's quick and easy to do just visit [lancashire.gov.uk/report](https://lancashire.gov.uk/report)

Alternatively, you can call Lancashire County Council highways on 0300 123 6780, or for out of hours highways emergency call 101.



## SUNNYSIDE REST HOME AND SUNNYBANK DAY CARE CENTRE UNDER NEW OWNERSHIP

Carl and Catherine, the new owners, would like to take this opportunity to thank the staff, residents and locals who have been very welcoming and supportive. They are determined to provide the best environment and positive culture they can create and focus on constant improvement in both facilities.

The Rest Home is popular, offering day visits and respite rooms as well as permanent accommodation and care and all are very settled and happy.

The Day Care Centre reopened on Monday 25th October, initially 9am-12pm Monday to Friday as a community hub for anybody wanting a drink and a chat. In the future the centre will be offering lunches, events and visits from groups and organisations who can offer guidance and help in various areas.

They look forward to welcoming you into the new Community Hub at Sunnybank Day Care Centre. For more information about the rest home contact Catherine Hullett on 01706 344292 and to find out about the day centre and community hub contact Carl Hullett on 07584 502822.

---

## WHITWORTH SKYLINE



Whitworth's annual community walk, will, fingers crossed, be back in May 2022, probably on Sunday May 15. Skyline 7 has been postponed twice, for obvious reasons, but next year the Sports Council are planning to give it a go. As ever, it will involve a 14-mile circuit of the moors above Whitworth, starting at Lobden Golf Club and finishing there with a free meal and an open bar. It will be, as it would have been two years ago, a clockwise circuit i.e. up Rooley Moor Road, which enables us to offer two shorter walks as well, a 9-mile Western Skyline finishing at Britannia, and a 3-mile Skyline Sunday Stroll finishing at the bottom of Rooley Moor Road. Anyone who doesn't fancy walking, but would like to be involved in some other capacity (e.g. marshalling, backmarking, or back at Lobden) is asked to contact Jo Furtado on 07813 180748 or jofurtado@hotmail.co.uk.

---

## ST BARTHOLOMEW'S, WHITWORTH & ST JOHN'S, FACIT



St Bartholomew's, Whitworth & St John's, Facit would like to invite you to the services over the Christmas season. Come on and Celebrate. All are welcome. Further details from Rev'd Joanna Watson on 01706 524657



- |                           |   |
|---------------------------|---|
| <b>St John's -</b>        | Wednesday 8th December, Christingle Service at 6.30pm with St John with St Michael's School |
| <b>Whitworth Co-op -</b>  | Saturday 11th December, 'Carols at the Co-op' at 10.30am                                    |
| <b>St Bartholomew's -</b> | Sunday 12th December, Carol service at 3pm  |
| <b>St John's -</b>        | Christmas Eve, Crib Service at 6pm  |
| <b>St John's -</b>        | Christmas Eve, Midnight Communion at 11.30pm  |
| <b>St Bartholomew's -</b> | Christmas Day, Communion at 9.30am  |



**theboilerfitters.com**  
Professional Plumbing & heating service



Finance available from only **£10 per week**

**Contact Daniel Brophy:**  
**07817 784435**  
email:  
**db.plumbing@live.com**

 **JJS Electrical Contractors Ltd** 

**For all your electrical needs**

All Domestic, Commercial & Industrial works undertaken and fully guaranteed

Full Installation & Testing of EV Home Charge points, OLEV EVHS Grants available

Contact us on 01706 872 728 or email [mail@jjslectricalcontractors.co.uk](mailto:mail@jjslectricalcontractors.co.uk)

[www.jjslectricalcontractors.co.uk](http://www.jjslectricalcontractors.co.uk)

**ROSSENDALE LAW**  
SOLICITORS

501 Market Street, Whitworth B, Rossendale, Lancashire OL12 8QN

 **CHRISTMAS DEAL** 

**20% OFF ANY POWER OF ATTORNEYS FROM THE 1ST OF DECEMBER UNTIL THE 14TH OF JANUARY**

Not including disbursements

FOR MORE INFORMATION PLEASE CONTACT  
[KIM.SPENCER@ROSSENDALELAW.CO.UK](mailto:kim.spencer@rossendalelaw.co.uk)  
01706854167

 **ROSSENDALE LAW**  
SOLICITORS

**High Power Pressure Washing**

**Path pavings cleaned**  
**Patio cleaning**  
**Driveways & Tarmacing**  
**Decking & Cobbles**  
**Graffiti removal**  
**Garden stone walls**  
**Moss & algae removal**

**Eco-friendly chemicals used in all cleaning procedures**

**Contact Sean on 07773 798078**



ASK Service Electrical Contractor

**ASK for - Mike Keiley**  
**Tel / Fax: 01706 854929**  
**Mobile: 07837 065579**

No job too small!

Certificates issued for Part P  
Building regulations,  
Appliance Testing  
& Fault Finding



## MITCHELL'S MOTOR SERVICES HALFWAY GARAGE

MOT preparation, presentation & repair  
Pick up delivery service available  
(by appointment)  
Diagnostics, supported by the latest  
'Snap On' software  
Servicing / Repairs



**cars, vans, 4x4's**  
**all makes, all models**  
**no job too large or small**

**01706 854300 • 07977 458646**  
721 Market Street, Facit, Whitworth, OL12 8LD

## Tracy Johnson



NLP Master Practitioner / Hypnotherapist

(Neuro Linguistic Programming) Coach and Trainer

- 1-1 or group sessions available
- Children and adults
- Positive mental health
- Healthy and harmonious relationships
- Change behaviour e.g. weight management
- Anxiety, low mood, grief and stress
- Self confidence and esteem
- Enhance your happiness
- Pain management

**Call 07564 352221**

visit [www.tracy-johnson.co.uk](http://www.tracy-johnson.co.uk)  
or email [info@tracy-johnson.co.uk](mailto:info@tracy-johnson.co.uk)



## Prime Roofing (R) Ltd

FOR ALL YOU ROOFING REQUIREMENTS

**SLATING / TILING**

**FLAT ROOF SPECIALISTS**

**FASCIAS / GUTTERS**

[primeroofingltd@aol.com](mailto:primeroofingltd@aol.com)

**01706 359349 for a FREE quotation**



### **Mondays**

14:00 – 16:00

18:15 – 18:45

**Knit and Natter** All welcome!

**Bedtime Story**- every last Monday of the month, wear your pyjamas and snuggle up with a favourite teddy (18 months- 8 years).

### **Tuesdays**

10:00 – 12:00

14:00 – 15:00

15:00 – 17:00

**Scrabble Club** Great company and good fun – why not join us?

**Storytime and More! Stories and themed activities** (18m- 5 years).

**U3A Wellbeing** 1st Tuesday of month. T. 07762 757925 (Sheila) for info.

### **Wednesdays**

11:00 – 12:00

19:00 – 20:30

**Therapeutic Exercise and Wellbeing** with Sheila Daly (07762 757925).  
£5 donation.

**Yoga, Pilates and Relaxation** with Sheila Daly (07762 757925).  
£5 donation.

### **Thursdays**

10:00 – 11:30

10:00- 12:00

13:30 – 15:30

13:30 – 15:30

14:00 – 15:00

**Shared Reading Group** All welcome!

**U3A Family History** on last Thursday of month. T. 07790 192120  
(Jean) for info.

**U3A Art Group** 1st Thurs of month. T. 07800 820096 (Lindsay) for info.

**U3A Flower Arranging** 3rd Thursday of month. T. 07411 520771 (Nina) for info.

**U3A Creative Writing** 1st Thursday of month. T. 07903 570008  
(Kay) for info.

### **Fridays**

10:15 – 11:00

15:15- 16:45

**Baby Bounce and Rhyme** (birth to 18 months).

**Homework Club** – want to get your homework done before the weekend? Pop in and find a quiet place to work, use the computers or ask us if you need any help.

### **Saturdays**

10:30 – 12:30

13:00 – 15:00

**Lego Club** (for all ages).

**Whitworth Wellbeing Group** For more information, please email Jodie at: whitworthmentalhealth@aol.com

**... and most importantly books! The library also provides useful information and can help you find what you need e.g. general or specific information, bus services, forms, etc. You can have use of the public computers, print and photocopy too ... and of course see friendly faces.**

**Everyone welcome!**

**Updates can be found in the library, or on the Friends of Whitworth Library Group Facebook page, or contact [friendsofwhitworthlibrarygroup@gmail.com](mailto:friendsofwhitworthlibrarygroup@gmail.com) to be added to the mailing list.**

## VALLEY THAI BOXING CLUB CELEBRATE SUCCESS AT TOURNAMENT

Valley Thai members fought in the Sandee Open Championship on 11th September. Mason Jenkinson (13) won his first fight, ending up facing his teammate Daniel for the final. Daniel Calderbank (13) has had 6 fights so far and only lost one in his junior career. This was his first time fighting in a tournament. He won the quarter final and semi final fights to reach the final where he faced Mason. Trainer Andy and the show promoter agreed the boys will share the title instead of fighting each other.

Andy's sister, Abbie Hughes (17) has won this competition every year since she was 9 in addition to British titles. After 30 fights so far she has now moved into the adult ranks and coaches at Valley Thai. Abbie won her fight by a head kick knockout in round 4. Imogen Webster (10) fought her first tournament. She won the semi final and got a stoppage win in the final. Thomas Miller (10) has had 12 fights with a mixed bag of results. He has won the English title previously and it was his 3rd time entering this tournament. He had a straight final which he won after 5 hard fought rounds.



Ben Bunnell, Andy Hughes, Abbie Hughes and Wayne Beresford


On 9th October, Valley Thai had 2 fighters out competing. Abbie fought and won the WMO northern area title beating Katie Bowers from Siam Camp in Oldham. The fight went the distance with Abbie comfortably winning the title. Ben Bunnell had his second fight for Valley Thai on the Siam supershow and he also won comfortably. Both guys have been training really hard in preparation and it was clear to see with the results they achieved.

**Have you considered...**


- Walking or cycling to school instead? This is a great way to contribute to a child's 60 minutes of activity a day and is easy to incorporate into your daily routine. Try it once a week at first and see how easy it can be.
- Parking nearby or getting off the bus two stops earlier and walking the rest of the way. If you live too far away to walk or need your car for your commute to work you can still walk part of the way. Doing this everyday could add up to an adult's recommended 30 minutes of moderate exercise, 5 times a week.
- Car Sharing is a great way to reduce congestion and save you pennies. Team up with other parents or carers who live nearby- share the cost and halve the hassle.

If you have a parking concern outside of your school report it online at [www.lancashire.gov.uk/parking](http://www.lancashire.gov.uk/parking)

For more information on this leaflet please email Road Safety Team at [safetravelteam@lancashire.gov.uk](mailto:safetravelteam@lancashire.gov.uk)




**Lancashire Constabulary**  
police and communities together




Sign up to Change4Life at [www.change4life.co.uk](http://www.change4life.co.uk)

# School Parking



00004111

[www.lancashire.gov.uk](http://www.lancashire.gov.uk)







# Live well, *your* way

Start your home care journey with  
Home Instead® today.

- ♥ Home Help
- Personal Care
- Live-in Care
- 👤 Companionship
- ♦ Dementia Care

01706 249100  
rochdale@homeinstead.co.uk

Each Home Instead franchise is independently owned and operated. Copyright © Home Instead® 2021.

## K9 BOOT CAMP

WWW.ANDISK9BOOTCAMP.CO.UK

CERTIFIED  
TRAINER/BEHAVIOURIST  
ANDI 07545025353



## Phil Jones Plumbing and Heating

DOMESTIC AND COMMERCIAL  
PLUMBING AND HEATING  
REPAIRS AND  
INSTALLATIONS INC LPG

For more information please call me on  
07976 886926

or email me on [pjplumbingandheating@yahoo.com](mailto:pjplumbingandheating@yahoo.com)

## NEW MASSEYCROFT ACCESS POINT

A new access point is to be installed at the end of Masseycroft where the path crosses the river.

A local partnership looking at the issue of illegal motorbike access through Masseycroft and up on to local moorland has been working together for 6 months to identify access points used by illegal off road motorbikes. There has been joint work with Lancashire Police and Greater Manchester Police targeting motorbikes illegally accessing moorland. Lancashire County Council and local residents have been putting up signs needed to allow police to seize illegal motorbikes.

The partnership has worked with local residents and members of the Commoners Association to identify key access points, and access from Masseycroft has been identified and a major issue. Lancashire Police have received many complaints about the motorbikes from local residents, and antisocial behavior complaints about off road motorbikes is the highest reported ASB issue. Local issues reported include horse riders knocked from their horses by motorbikes illegally using bridleways, and walkers having to jump out of the way of these vehicles.

Consultation has taken place with local horse riding groups, the Whitworth Inclusion Project (to look at disability access issues), the Whitworth Community Partnership and Whitworth Town Council.

The new access point will feature a 'K' barrier suitable for wheelchairs but not for motorbikes, a 'Tiger Trap' suitable for horse access and new fencing.



---

## NEW BUSINESS OPENS IN BACUP

Carly Rann started The Dolly Bird back in 2014 making hand stamped keyrings, wooden plaques and Christmas gifts. Her business started to grow and within the first year she was selling internationally. Over the last 7 years, The Dolly Bird into a well established online handmade gift shop, constantly adding new products including wax melts which added another aspect to the business.

The opportunity arose to expand into a retail shop which opened in August 2021 with new ranges of handmade gifts added.

Carly said "I am so happy that I can make a living for my family and offer a wide range of handcrafted gifts, whilst doing something that I love- being creative!"

The shop is open Tuesday to Friday 10am - 4pm and Saturday 10am - 2pm at 18 Yorkshire Street, Bacup, OL13 9AE (bottom of Todmorden Road).



WHITWORTH FAMILY COMPANY

# **THE CARPET & FLOORING DEPOT**

Carpets, Vinyls, Laminates,  
Designer Flooring & Remnants  
**ALL AT DISCOUNT PRICES**



STOCKISTS OF ALL LEADING CARPET AND VINYL MANUFACTURERS  
**HUNDREDS OF ROLLS IN STOCK**

FREE: LOCAL DELIVERY - PLANNING AND MEASURING SERVICE  
**PROFESSIONAL FITTING SERVICE AVAILABLE**

**01706 656466**

48 WHITEHALL STREET, ROCHDALE, OL12 0LN

**FAMILY RUN WITH FAMILY VALUES**



## Whitworth Community Carol Service

*Attended by the Mayor of Whitworth, Councillor Maureen Jones*

**Monday 13th December 2021**

**7pm at The Ashcroft**   
Free entry - all welcome!

For more information  
please call  
01706852018 

  **Whitworth  
Town Council**

## **ROCHDALE** DOG WALKING SERVICES

-  **Dog Walking**
-  **Home Boarding**
-  **Pet Sitting**
-  **Small Pet Care**

Est:2008 Fully Insured

**07917466228**

Email: [rochdaledogwalking@mail.com](mailto:rochdaledogwalking@mail.com)

Find Us On:



Market Street, Whitworth, OL12 8TF

## **Rose 'n' Bowl**

264 Newchurch Rd, Stacksteads, Bacup, OL13 0UG  
Est. 1989

**PREBOOKED  
TAKEAWAYS  
AVAILABLE**

Ring for more details  
and to order

**01706 879555**

[www.rosenbowl.co.uk](http://www.rosenbowl.co.uk)





## **WHITWORTH & DISTRICT U3A**

After 18 months operating mainly on Zoom, u3a members were delighted to meet up again during the summer at The Ashcroft. The AGM was held in September when it was agreed to change the Constitution to allow the current Committee to continue in office in order to concentrate on building up the membership to pre-Covid numbers.

At the November meeting, members welcomed back John Alker, a local Blue Badge Guide, whose talk was entitled 'The Manchester Pals'. In December Carol and Steve Robson will entertain with their Fools Gold Christmas Special, getting the festivities off to a good start.

All the interest groups are up and running again with one or two new ones starting such as Senior Fun Tap and Coffee, Cake and Chat. The Play Reading and Amblers are also back after a break.

New members are welcome at the monthly meetings held at The Ashcroft on the first Wednesday of the month at 1.00 pm for an annual membership of £15 and £2 monthly meeting subs. Anyone interested may attend two meetings before joining.

A full list of speakers, contact details and interest groups, can be found on the Facebook page and website ([u3asites.org.uk/whitworth](http://u3asites.org.uk/whitworth)).

---

## **CANCER RESEARCH COMMITTEE**

Restrictions have limited fund raising events but the committee have been able to run two events at Lobden. A golf tournament raised £1020 and an afternoon tea raised £701. Thank-you to Lobden golf club for their continued support and to all who supported these events.

New events are being planned and there will be two more before Christmas. A curry night at Ashoka on 18th November and a Christmas quiz at the band club on 11th December. Unfortunately, it won't be possible to hold the annual band carol concert this year, hopefully all will be back to normal in 2022.

The committee are on the lookout for new members should you have interest in joining please contact on one of numbers below. Likewise if you have any fundraising ideas or wish to donate to cancer research UK.

Michael Whitby 852613, Arnold Ashworth 343424 or Elaine Bagshaw 853935.





## Plumbing & Heating Services

Professional, Reliable, Affordable

- For all heating systems
- Installation
- Service
- Repairs



Mobile: 07515 100 161

Tel: 01706 653 581

Email: brad@bowerheatingservices.co.uk

## NORMAN HILL FABRICATIONS



Gates • Railings  
Security Grilles • Site Welding

Unit 14, Daniel Street Industrial Estate,  
Whitworth  
OL12 8BX

Tel: 01706 852184

Mobile: 07980 957351

Email: norman@normanhillfabrications.co.uk

www.normanhillfabrications.co.uk

Call now for a FREE,  
no obligation quote!

## A. J. Nuttall Ltd., Pharmacy

Mr A.J. Nuttall BSc (Hons), MRPharms



- Confidential computerised records
- Repeat prescriptions
- Ostomy and Surgical Products
- Sports Injuries

So the next time you're unwell...  
ask your pharmacist!  
You'll be taking good advice.

Tel: 01706 853284

603 Market Street, Whitworth (opp Medical Centre)  
Mon - Fri 8.30am - 6.30pm (closed for lunch 12.30 - 1.30pm)

## CROWTHER optometrists

OUR SERVICE IS AS UNIQUE AS YOUR EYES



For a friendly and professional  
service from an Independent  
Optometry Practice  
established for over 50 years.

**LOOK NO FURTHER**

33/35 Market Street, Bacup, Lancs., OL13 0AJ

Tel: 01706 874631



# ALL NEW YARIS

**NOW AVAILABLE TO TEST  
DRIVE AT RRG ROCHDALE**



RRG Rochdale Toyota  
Edinburgh Way, Rochdale, OL11 2PD  
Tel: 01706 863 253  
[rrgrochdale.toyota.co.uk](http://rrgrochdale.toyota.co.uk)



/RRGRochdaleToyota



@ToyotaRochdale

Model shown is Yaris Design Hybrid Petrol 1.5 VVT-i Auto £21,850 including optional Pearlescent paint at £880. Prices correct at time of being published. 5 year/100,000 mile manufacturer warranty. Terms and conditions apply. Official fuel consumption figures in mpg (l/100km): combined 57.7 (4.9) - 68.9 (4.1) Combined CO<sub>2</sub> 112-92 g/km. Figures are provided for comparability purposes; only compare fuel consumption and CO<sub>2</sub> figures with other cars tested to the same technical procedures. These figures may not reflect real life driving results. All vehicles are certified according to the World Harmonised Light Vehicle Test Procedure (WLTP). CO<sub>2</sub> figures (and hence car tax and recommended 'on the road' prices) may differ from information printed before 1 April 2020, due to a change in the official method of calculation. This date may change, please visit [www.vehicle-certification-agency.gov.uk/fcb/wltp.asp](http://www.vehicle-certification-agency.gov.uk/fcb/wltp.asp) for the latest information. For details of your preferred model and grade derivative, please contact your local Toyota Centre. Choice of options and accessories fitted (pre-registration) may affect the official CO<sub>2</sub> figures, car tax and 'on the road' price.

# THINK

## SLOW DOWN AND GIVE YOURSELF TIME TO REACT

The number of  
**people killed on**

Country roads

is nearly

**10 times higher**

than on



motorways

# LOCAL TRADES LIST

## CHILDREN – EDUCATION & TUITION:

**Childminder OFSTED registered level 3 qualified:**

**GILL CHORLTON**

Tel: 07962190667

(7 Lobden Crescent Whitworth)

## HEALTH & WELLBEING:

**BARLEY VIEW RETIREMENT AND CARE HOME**

"Feeling at home, not in a home"

Call us on 01706 344534 or 07542 229367

and speak to Jane for an informal chat or visit

[www.whitworthcare.org.uk/barley-view](http://www.whitworthcare.org.uk/barley-view)

(Market Street, Whitworth, Lancashire)

**HEALEY DELL HERITAGE CENTRE AND TEAROOMS**

Fully Licensed tearoom and free venue hire

Open Thursday to Sunday from 10am to 5pm

Dell Road, Rochdale

bookings and enquiries 01706 350 459

[Hello@healeydelheritagecentre.co.uk](mailto:Hello@healeydelheritagecentre.co.uk)

[www.healeydeltearooms.co.uk](http://www.healeydeltearooms.co.uk)

## PROPERTY SERVICES:

**CJ ROTHWELL LANDSCAPING AND DRAINAGE**

[cjrothwell@hotmail.com](mailto:cjrothwell@hotmail.com)

Tel: 07846 107922

(39 Rawstron Street, Whitworth)

**Gas Engineer (servicing, installation & repairs, kitchen & bathroom): RLH GAS & PROPERTY SERVICES**

(Richard Lyon-Hayes) Tel: 07970 470019

[rlhgasandpropertyservices@yahoo.co.uk](mailto:rlhgasandpropertyservices@yahoo.co.uk)

[www.rlhgas.co.uk](http://www.rlhgas.co.uk), Gas Safe registered 531279

(33 Oak Street Shawforth)

**High power pressure washing (paths & patio cleaning driveways & tarmacking, decking & cobbles, graffiti removal, garden stone walls, moss & algae removal, plus window cleaning:**

**SEAN BRADLEY**

Tel: 01706 879928 / 07773 798078

[Seanbrad09@gmail.com](mailto:Seanbrad09@gmail.com)

(28 Douglas Road, Bacup)

**Painting & Decorating: ANDREW ROBINSON**

Tel: 01706 639709 / 07967 203484

(4 Meadow Head Avenue Whitworth)

**Painter and Decorator: PETER RICHARDSON**

Tel: 01706 854729 mob 07957 758928

Over 30 years' experience, no job too small

(9 Heatherlands, Whitworth)

**Plumbing & Heating - LPG (Gas Safe Reg)**

**PHIL JONES**

Tel: 07976 886926 /

[pjplumbingandheating@yahoo.com](mailto:pjplumbingandheating@yahoo.com)

(4 The Hedgerows, Whitworth)

**Window & UPVC Cleaning – Carpet & Upholstery Cleaning Jet Washing:**

**OPENREACH**

Tel: 0800 612 7679 / [openreach-wcs@tiscali.co.uk](mailto:openreach-wcs@tiscali.co.uk)

[www.openreach-wcs.co.uk](http://www.openreach-wcs.co.uk)

(35 Westgate, Whitworth)

**LANCASHIRE CHAIR COVERS**

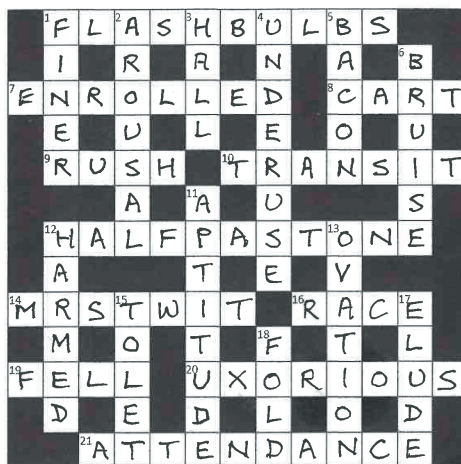
Venue styling showroom and gift

shop 07977 118 187 or 07494 463 361

[lancashirechaircovers@gmail.com](mailto:lancashirechaircovers@gmail.com)

(539 Market Street, Whitworth)

## CROSSWORD ANSWERS



**List your business for £5.21 + VAT per edition!**

**01706 852018 / [info@whitworth.gov.uk](mailto:info@whitworth.gov.uk)**

This community magazine is produced by Whitworth Town Council. It is distributed to 3,900 properties in Whitworth four times a year.

Editorial content is carried free of charge; advertising rates can be provided upon request.

Whitworth Town Council cannot be held responsible for the accuracy of any information provided for submission by outside organisations, the quality of service offered by advertisers, or the content of adverts within the magazine.

# USEFUL CONTACTS

## WHITWORTH TOWN COUNCILLORS:

### FACIT & SHAWFORTH WARD:

**Tom Aldred** (Labour):

01706 852183 • [atomaldred@aol.com](mailto:atomaldred@aol.com)

**Lynda Barnes** (Conservative):

07944 116385 • [lyndabarnes@rossendalebc.gov.uk](mailto:lyndabarnes@rossendalebc.gov.uk)

**Donna Nutt** (Community First):

07532 144924

**Janet Whitehead** (Independent):

07795 577647 • [cllrjanetwhitehead@gmail.com](mailto:cllrjanetwhitehead@gmail.com)

**Mike Royds** (Independent):

07811 994 458 • [cllrkimeroyds@outlook.com](mailto:cllrkimeroyds@outlook.com)

**Kim Olaolu** (Independent):

07434 034784 • [cllrkimolaolu@gmail.com](mailto:cllrkimolaolu@gmail.com)

### HEALEY & WHITWORTH WARD:

**David Chorlton** (Independent):

07939 218266 • [cllrddchorlton@gmail.com](mailto:cllrddchorlton@gmail.com)

**William Calderbank** (Community First):

07508 402278 • [wcalderbank99@gmail.com](mailto:wcalderbank99@gmail.com)

**Maureen Jones** (Community First):

07794 356610 • [maureen5961@hotmail.com](mailto:maureen5961@hotmail.com)

**Alan Neal** (Community First):

07817 414721 • [alanneal@rossendalebc.gov.uk](mailto:alanneal@rossendalebc.gov.uk)

**Dayne Powell** (Community First):

07795 022564 • [Dayne.powell@outlook.com](mailto:Dayne.powell@outlook.com)

**Stella Troughton** (Independent):

07715 434272 • [cllrstroughton@gmail.com](mailto:cllrstroughton@gmail.com)

## WHITWORTH TOWN COUNCIL OFFICES:

Civil Hall, Market Street

Whitworth, OL12 8DP

Contact: Melanie Hearn, **The Town Clerk**

tel: 01706 852018

email: [info@whitworth.gov.uk](mailto:info@whitworth.gov.uk)

[www.whitworth.gov.uk](http://www.whitworth.gov.uk)

Office hours: Mon - Fri, 9am - 2.30pm

## ROSSENDALE BOROUGH COUNCILLORS:

### FACIT & SHAWFORTH WARD:

Lynda Barnes and Janet Whitehead

### HEALEY & WHITWORTH WARD:

**Alan Neal and Dayne Powell**

(See left for contact details)

## LANCASHIRE COUNTY COUNCILLOR:

**Councillor Scott Smith**

[Scott.Smith2@lancashire.gov.uk](mailto:Scott.Smith2@lancashire.gov.uk)

07891 695962

## MEMBER OF PARLIAMENT:

**Jake Berry MP**

0207 210 5000 (House of Commons)

01706 215547 (Constituency office)

[jake.berry.mp@parliament.uk](mailto:jake.berry.mp@parliament.uk) • [www.jakeberry.org](http://www.jakeberry.org)

## FORTHCOMING WHITWORTH TOWN COUNCIL MEETING DATES:

Thurs 18 Nov, Thurs 2 Dec, Thurs 16 Dec, Thurs 13 Jan, Thurs 27 Jan, Thurs 10 Feb, Thurs 24 Feb

All meetings are open to the public and take place at 7.30pm in the Council Chamber at 7.30pm.

See the website for details or contact the Town Clerk.

## OTHER USEFUL CONTACTS:

**Community Police Officer PCSO 7356 Heidi Kirkbright:** to report a non-urgent crime or incident, please dial 101 or visit [www.lancashire.police.uk/contact-us/how-do-i-report-a-crime](http://www.lancashire.police.uk/contact-us/how-do-i-report-a-crime). For emergencies only, dial 999. Report information confidentially to CrimeStoppers on 0800 555 111 • sign up to 'In The Know' to receive alerts around crime patterns in Whitworth [stayintheknow.co.uk/LancashireTalking](http://stayintheknow.co.uk/LancashireTalking)

**Lancashire County Council:** 0300 123 6701 (general enquiries) [www.lancashire.gov.uk](http://www.lancashire.gov.uk) • Highways 0300 123 6780 or email [highways@lancashire.gov.uk](mailto:highways@lancashire.gov.uk) • out of hours social care emergencies 0300 123 6720

**Rossendale Borough Council:** 01706 217777 (council tax, bin collections and other services) • 0300 222 5944 (revenues and benefits) 0300 222 5946 (out of hours emergencies) • [www.rossendale.gov.uk](http://www.rossendale.gov.uk)

**The Lighthouse Community Foodshare:** 551-553 Market Street Whitworth Tuesday, Thursday and Saturday between 10am and 3pm by appointment only • [lighthousefoodshare@gmail.com](mailto:lighthousefoodshare@gmail.com) • 07922 951 096

**Together Housing:** 0300 555 5556 (general enquiries)

**Homestart:** 01706 214621 • [Emma@homestartbrb.co.uk](mailto:Emma@homestartbrb.co.uk) • [www.home-start.org.uk](http://www.home-start.org.uk)

**Carers Link Lancashire:** 01254 387444 • [info@carerslink.net](mailto:info@carerslink.net) • [www.eastlancscarers.org.uk](http://www.eastlancscarers.org.uk)

**Citizens Advice Rossendale:** Financial, welfare and benefits advice 0300 456 2552 • [www.carh.org.uk](http://www.carh.org.uk)

**The Samaritans:** 01706 830999 • (Freephone) 116 123 Universal Credit: (Freephone) 0800 731 9344

**Lancashire Volunteer Partnership:** Befriending service for people who want someone to talk to [www.lancsvp.org.uk](http://www.lancsvp.org.uk) • 0777 997 2114

Although we have made every effort to make sure the content is up to date, due to changing restrictions imposed by the government there could be changes to services advertised and opening of businesses and other amenities.

Whitworth Valley News is Printed by Mr MEOW Limited - [www.mr-meow.co.uk](http://www.mr-meow.co.uk)