

# Whitworth

## VALLEY NEWS



PRODUCED BY  
**Whitworth**  
Town Council

### A NEW LEASE OF LIFE FOR OUR LEISURE CENTRE



**Whitworth**  
LEISURE CENTRE  
Fit For The Community

**Memberships now available at:**  
[whitworthleisurecentre2023@outlook.com](mailto:whitworthleisurecentre2023@outlook.com)

## The Window And Door NEW YEAR Outlet NEW LOOK

Great Products.. Great Prices..



10 YEARS  
GUARANTEE &  
INSURANCE  
BACKED FOR  
PIECE OF MIND



**YOUR LOCAL U.P.V.C.  
& ALUMINIUM  
SPECIALIST**

Bi-Folding Doors | Sliding Doors  
Conservatories | Composite Doors  
Windows | Glass Balustrades | Porches

The Window & Door Outlet  
Unit 8, Daniel Street,  
Whitworth, Rossendale, OL12 8BX

☎ sales@twado.co.uk

🌐 www.twado.co.uk

**0%  
FINANCE  
OPTIONAL  
FREE  
CONSULTATION**

☎ **01706 436444**

FOLLOW  
US ON



## Having a party or a get-together?

We have a wide range of menus available  
(including our famous potato pie!)  
for collection, delivery or with service

Official caterer on the East Lancs steam  
train, Bury: 'Dining with Distinction'



Call us now for a quote!

**01706 853251**

www.lordscaterers.co.uk

2 Spring Bank, Mills Street, Whitworth, OL12 8QP  
(directly behind former premises)



### WILL & POWER OF ATTORNEY FEES

- Wills - £100.00 + VAT (£120.00)
- Mirror Wills - £150.00 + VAT (£180.00)
- Power of Attorney - £300.00 + VAT per application plus an £82.00 registration fee.

We are offering a 'buy one get one free' package when applying for both Power of Attorney applications. Please note that the £82.00 registration fee would still apply to each application.

### APPOINTMENTS FOR ADVICE

Appointment fees start at £50.00 + VAT (£60.00).

### CONVEYANCING FEES

- Property purchase or sale fees start at £550.00 + VAT and disbursements.
- Property remortgage or transfer fees start at £350.00 + VAT and disbursements.

### OUR SERVICES INCLUDE:

- Residential & Commercial Conveyancing.
- Family law including divorce & children applications.
- Wills & Power of Attorney applications.
- Probate & Court of Protection applications.
- Civil litigation.
- Employment law.

If you have any questions or want to make an enquiry, please contact the office on 01706854167 or email [kim.spencer@rossendalelaw.co.uk](mailto:kim.spencer@rossendalelaw.co.uk).

## A. J. Nuttall Ltd., Pharmacy

Mr A.J. Nuttall BSc (Hons), MRPharms



- Confidential computerised records
- Repeat prescriptions
- Ostomy and Surgical Products
- Sports Injuries

So the next time you're unwell...  
ask your pharmacist!  
You'll be taking good advice.

**Tel: 01706 853284**

**603 Market Street, Whitworth (opp Medical Centre)**  
Mon - Fri, 8.30am - 6.30pm (closed for lunch 12.30 - 1.30pm)



# MESSAGE FROM THE MAYOR

## Dear Whitworth Residents and Friends,

May I take this opportunity to wish everyone a happy and healthy New Year and welcome in 2024, which is a Leap Year.

Starting at the beginning of November, I was very privileged to lead the community at the Remembrance Service. It was once again very well attended and immaculately observed. Our fund-raising Curry Night at Ashoka went really well, an excellent variety of food was served, followed by "Stand Up Bingo", thanks to Councillor Whitehead, and a raffle. The event raised £200 for the Mayor's Charity Fund. We had a very busy lead up to Christmas starting with a visit to Shawforth Methodist Church for their Christmas Fayre and Carols by the Whitworth Choir. The end of November saw us at Barley View to help with a tree planting to commemorate five years since the care home opened. Also, at the end of November, the Cattle Grid was finally installed after a couple of years spent chasing this up. Our thanks to Councillor Olaolu for her tenacity in getting this over the line.



Moving into December, we attended the Rossendale Business Awards, held at the Ashcroft, along with the Mayor of Rossendale. It was great to see Whitworth-based businesses receiving awards. On the 10th of December, we were invited by the Mayor of Rochdale to attend the Rochdale Council Carol Service at St Chads Church.

On Monday 11th, we were delighted to join Stronger Together at their Christmas Lunch at The Ashcroft - great entertainment, and a superb buffet, supplied by Market St Kitchen. Unfortunately, just as we were leaving, the Mayoress slipped and had a heavy fall, resulting in a dislocated and broken wrist. This meant we were unable to attend our own Carol Service due to being at the hospital for a while, getting home just before midnight. My thanks to our Town Clerk and Deputy Mayor for reorganising things at very short notice. This was a very well attended event which I hope everyone enjoyed. Sadly, this accident meant we had to miss some events at local schools in the days following this, events which we had been looking forward to. I did manage to attend St Bartholomew's Nativity which I thoroughly enjoyed. I will now always remember Upsidaisy Angel. Our best Christmas present arrived about 5pm on 14th December when Whitworth Town Council at last got the keys for the Leisure Centre. This facility will be operated by Whitworth Leisure Centre CIC (see pages 16 & 17).

With Best Wishes,

Councillor Mike Royds, Mayor of Whitworth



## WHITWORTH SCOOPS THREE TROPHIES AT BUSINESS AWARDS



Whitworth companies enjoyed amazing success at the 14th annual Rossendale Business Awards.

Lisa Greenhalgh, Managing Director of Finlay Jude Associates Limited won the Enterprising Person Category.

The Not-for-Profit trophy went to the Whitworth-based Lighthouse Community Foodshare, also a finalist in Green Initiative and Sustainability.

Naomi Burke, a member of the Lighthouse management committee, said: *"We have been established for three years now and we see hundreds of clients - some even come from Haslingden - because they are in between payments, waiting for Universal Credit or have been sanctioned."* The organisation creates a shop using the food items that have donated and gives the customers 15 minutes to have a free shop so they decide what they want and retain their dignity.

Workforce Development sponsored by Nelson & Colne College Group was won by Milcare and Market Street Kitchen was Highly Commended in Hospitality Business.

Other finalists were: The Women of Whitworth Project - Part-Time Business; CQC Carer Training - Invest in Rossendale; and Stronger Together Carers – Not for Profit.

---

## DIFFERENT WAYS TO HELP WHITWORTH IN BLOOM



By the time you read this, the spring bulbs planted by the volunteers last autumn should be well on their way to providing that blast of colour we all need after the winter months.

The Bloomers look after many of the roadside boxes as well as larger areas throughout the town and spend time considering the gardening requirements of each season. They often tackle tasks using their own tools so if anybody out there is thinking of updating their own garden equipment, or maybe no longer needs the tools they have, the Bloomers would be grateful for them. And now is also an opportune moment to thank all those members of the community who do not feel able to garden but have supported us with donations of cash.

The Bloomers also need help with heavier jobs at certain times of the year. If there is anybody who doesn't want to commit to regular gardening but could help with some larger occasional jobs, that would be much appreciated too. If you could help out, please contact 07904130206 or message the Whitworthinbloom Facebook page. There are many ways to help Whitworth in Bloom! Thanks in advance.

---

## WHITWORTH VALLEY NEWS

The Leisure Centre needs as much volunteer support (and money) as it can get. However, there's another volunteering opportunity locally that involves no money whatsoever – delivering the Valley News 4 times a year.

We're doing well for volunteers at the moment, but that situation can change very quickly through illness, injury, infirmity, holidays, work commitments etc, so the more the merrier.

If you're interested, please contact Jo Furtado on 07813180748, or leave your name and number with Town Clerk Rachel and Jo will get back to you to bite your hand off.

## CELEBRATING INTERNATIONAL WOMEN'S DAY AT THE LIBRARY



Don't miss 'Suffragettes' an engaging and informative talk about the suffragette movement and how two local women were involved in it.

Taking place at the library on Friday 15th March, 3-4:30pm, this informative talk, with a chance for discussion afterwards, will celebrate International Women's Day.

No need to book, just drop in.

### Do you know someone in Whitworth who can't get to the library and is missing their books?

The library team can bring the library home to them with the fabulous, free Home Library Service.

Marian loves getting her books delivered from Whitworth Library each month. She said *"It's a real lifeline for me. I love reading, so getting the books delivered to my home is wonderful!"*

Joining is easy and there are talking books and large print editions available too. For more information email the friendly librarians at [whitworth.library@lancashire.gov.uk](mailto:whitworth.library@lancashire.gov.uk) or just pop in and ask.



---

## COMMUNITY GALLERIES

Whitworth's **Community Mini-Galleries** have struggled a bit in the wake of the Leisure Centre closure – with any luck they'll be getting back to normal soon. Thank you to the exhibitors who have been patient with the situation, and thank you to Aimee at the Ashcroft for offering a temporary home.

Revised schedule – currently at the Library, **A (lovely) Year in the Life of Our Library**; and at the Ashcroft, artwork from students at **Tonacliffe School**. The Library will follow with artwork from **St Bart's School** (Feb 23); a photographic record of the **Tourism and Leisure Committee events** of the past 12 months (March 15); **Skyline** (April 5); and **Whitworth in Bloom** (April 26).

Each of those exhibitions will transfer to the Ashcroft 3 weeks later i.e. on the next date in that sequence.

---

## FELL RACES 2024

No Sports Festival this year (unless someone comes forward very quickly to organize it – contact Jo Furtado 07813180748 if that's you) but two of Whitworth's Fell Races will happen in June.

The adult (16+) race, now known as **Brown Wardle and a Bit Moor** will be on Wednesday June 12, and the long-running (sorry!) **Junior Fell Race** will be the next evening, Thursday June 13.

Further details in May's Valley News.

**BunnyBoilers**  
Gas | Central Heating | Plumbing

Installation,  
Service & Repair

All types of work undertaken



Call for a  
free  
quotation!

**Michael Bunnell | 07792 635826**

**DAYTONA  
DRIVING  
SCHOOL**



**Darren Lawler, ADI**

- Local Whitworth Instructor
- Pass plus courses
- Motorway and refresher lessons



**07814 566985**

[darrenjlawler@hotmail.co.uk](mailto:darrenjlawler@hotmail.co.uk)  
[www.daytonadrivingschool.co.uk](http://www.daytonadrivingschool.co.uk)

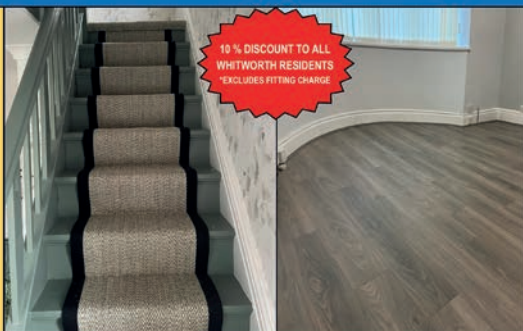
 **THE  
CARPET**  
& FLOORING DEPOT

**SPECIALISTS IN  
DOMESTIC AND  
DESIGNER FLOORS**

**CARPETS  
VINYL  
LAMINATES  
LVT**

**Hundreds of Rolls  
and Roll Ends in Stock**

- Free Local Delivery
- Free planning and measuring service
- Professional Fitting Service
- Stockists of all leading manufacturers
- Family business with over 100 years experience in the carpet trade
- Discounted prices—we will match any like for like written quote



**FAMILY BUSINESS, FAMILY VALUES**

**01706 656 466**

**48 WHITEHALL ST,  
ROCHDALE  
OL12 8LN**

ENTER THE WVN CROSSWORD MULTIVERSE

well, there are two of them...  
and one has a red (hint) SUPERCLUE  
to get you started on the cryptic...

CRYPTIC CLUES

And here's your Egyptian (give-away) **SUPER CLUE** – if you do this first it'll help with the asterisked clues, all of which are simpler, one-sided clues, and all of which will give you possible ingredients of the super clue answer (whether or not they mention the word "ingredient")

Mo loses height, but gains depth, to create a mix (5)

ACROSS

- 1 Completed circle for Queen of Carthage (4)
- 3 Respiration, Queenie – take a break? (8)
- 8 \*For example, empty guess (4)
- 9 Telling-off for carols around snowman? (8)
- 11 Government operatives use poet to create their declarations (10)
- 14 Red Rum sounds like he's voting against? (6)
- 15 \*Tiny Thomas consumed little Polo (6)
- 17 Prelate delivers over-the-top piece (10)
- 20 An international body makes promise to Liberal leader – not that anyone could hold them to it (8)
- 21 \*Crackers! (4)
- 22 First letter...but then send fewer letters down south! (8)
- 23 American Queen is addict (4)

DOWN

- 1 \*Down under would turn this into a real telling-off! (8)
- 2 K9? (8)
- 4 \*Ingredient for bonfire night? (6)
- 5 Having mineral variants, I call troop to order (10)
- 6 Cold stinging greeting (4)
- 7 First episode of heart-warming success story? (4)
- 10 At the bottom catch vacuum flask in holey bag (10)
- 12 Washing facilities carefully bash butt (8)
- 13 Mozart, for example, gives moose CPR (8)
- 16 \*Embarrassment? (6)
- 18 \*Bolt upright,eh? No, a partner, actually (4)
- 19 \*Mum has half a toy (4)

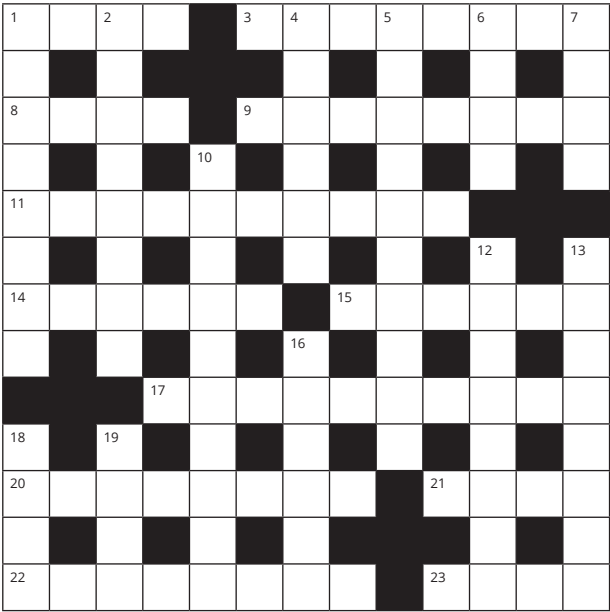
REGULAR CLUES

ACROSS

- 1 Singer from the 90s (4)
- 3 Time to gather yourself (8)
- 6 For breakfast, perhaps? (4)
- 9 Telling off (8)
- 11 Banks send them – politicians make them (10)
- 14 Sounds of a horse (6)
- 15 Red veg...or is it a fruit? (6)
- 17 Important cleric - from Canterbury, York, Westminster etc? (10)
- 20 Not promised? (8)
- 21 Hazel, Brazil, Pistachio etc (4)
- 22 Matthew, Mark, Luke and John (8)
- 23 Someone who regularly has recourse to something (4)

DOWN

- 1 A task most do pretty soon after getting up (8)
- 2 Stating opinions overbearingly (8)
- 4 They whoosh up on bonfire night (6)
- 5 The property an element has of appearing in many forms e.g carbon as diamond, soot etc (10)
- 6 Frozen rain (4)
- 7 Tatters (4)
- 10 At the bottom, or behind the rest (10)
- 12 Vessels you might wash yourself in (8)
- 13 Mozart, Beethoven, Stravinsky etc (8)
- 16 Edam, Brie, Yarg etc (6)
- 18 Large fish (4)
- 19 Often paired with 19 in a booty (4)





# THE MAYOR'S AWARDS

The Mayor of Whitworth, Cllr Mike Royds stated that his plan for his mayoral year was to celebrate the businesses in Whitworth and in October 2023, he held an awards night to do exactly that.

Nominations were submitted by residents, and 10 awards were presented on the night to Whitworth businesses and community groups. Local residents attended this fundraising event and thoroughly enjoyed the pie and peas supper provided. All proceeds from the event were split between the Mayor's Charity Fund and Whitworth Leisure Centre CIC. Local businesses Finlay Jude and Anglo Recycling kindly sponsored the event.

The winners on the night were:

**Small Business Award**  
Small World Nursery

**Sole Trader Award**  
Seasons Florist

**Single Shop Award**  
Healey Deli

**Large Business Award**  
Finlay Jude

**Business Serving Whitworth  
From Close By Award**  
Healey Dell Tea Rooms

**School Project Award**  
Tonacliffe Forest School

**Group Activities Award**  
Samba Dance & Fitness

**Voluntary Organisations Award**  
The Lighthouse Food share

Two other organisations were nominated by residents and awarded a special Mayor's Award:

## Stronger Together

The Mayor's Special award went to two ladies who set up a group to offer support, guidance and advice for many who are unsure where to turn to next. Their friendly and welcoming sessions are a huge success and attended by large numbers every week.

Kath and Angela provide fun activities every week including bingo, drawing and knitting. They also arranged a fantastic celebration event for the King's Coronation in May and held a fundraising raffle to further the work of the group. As well as doing all of this, the ladies are full time carers themselves, which is challenging and exhausting enough, but they always ensure others are put first.

## Poppy & Me Project

The second Mayor's Special Award went to a young woman who was born and raised in Whitworth. She served her country by spending twelve years in the Royal Military Police, which saw her serve two tours in Afghanistan.

In 2023, she had an idea to enhance the memorial gardens with a display of metal poppies and with the help of Councillor David Chorlton, an approach was made to local company, BCH Limited, for assistance. BCH wholeheartedly got behind the project and produced the poppies at no cost. The 457 poppies are now proudly on display on the railings of the Memorial Gardens, 457 representing the number of UK service personnel who gave the ultimate sacrifice in the Afghanistan conflict.





**Voluntary Organizations Award**  
The Lighthouse Foodshare



**Small Business Award**  
Small World Nursery



**Business serving Whitworth from close by Award**  
Healey Deli Tea Rooms



**Single Shop Award**  
Healey Deli



**Group Activities Award**  
Samba Dance & Fitness



**School Project Award**  
Tonacliffe Forest School



**Large Business Award**  
Finlay Jude



**The Poppy & Me Project**



**Stronger Together**



### Seasons

Unfortunately, Ruth from Seasons Florist was unable to attend on the night. She was chosen as a local business owner who goes above and beyond for her customers and is always keen to support local events and initiatives.

REAR OF 307A MARKET STREET, WHITWORTH,  
ROCHDALE, OL12 8PW  
TELEPHONE 01706 650829  
EMAIL [SALES@RTFENCING.CO.UK](mailto:SALES@RTFENCING.CO.UK)  
WEBSITE [WWW.RTFENCING.CO.UK](http://WWW.RTFENCING.CO.UK)

Opening hours are  
Monday – Thursday 7am until 4.30pm  
Friday 7am until 3pm  
Saturday 7am – 12pm

Supplier of timber fence panels, concrete products, timber posts, rails & boards and decking to the public and trade at competitive prices.

All panels are manufactured in house at our Whitworth site. Bespoke gates and panels are a speciality.

We also offer a fencing installation service – call for a free no obligation quote.

Visit our new hardware department selling all aspects of ironmongery, screws, nails, timber paints and decking oils to compliment your fencing.



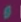


Along with garden lights and gardening tools and accessories, we also stock a wide range of decorating and DIY products.



 **Home  
Instead**  
*For us, it's personal*

# Live well, *your* way

Start your home care journey with  
Home Instead® today.

-  Home Help
-  Personal Care
-  Live-in Care
-  Companionship
-  Dementia Care

01706 249100  
[rochdale@homeinstead.co.uk](mailto:rochdale@homeinstead.co.uk)

Each Home Instead franchise is independently owned and operated. Copyright © Home Instead® 2021.

## A PREMIER VENUE FOR ROOM HIRE IN WHITWORTH

The Ashcroft stands as a beacon of elegance and versatility when it comes to room hire. The Ashcroft boasts a range of beautifully appointed rooms. Whether you're planning your wedding, a corporate meeting, a community event, or a personal celebration, The Ashcroft provides a variety of spaces that cater to different needs and preferences. From the intimate ambience of the smaller rooms to the grandeur of the larger event spaces, every inch of The Ashcroft has been thoughtfully designed to create a memorable and customisable experience for guests.



The venue has played host to a myriad of events, ranging from local business meetings and training sessions to weddings, parties, and cultural gatherings. The welcoming and accommodating staff at The Ashcroft contribute to the warm and inclusive atmosphere, making every guest feel like a valued part of the community.

Situated in the heart of Whitworth, the venue is easily accessible for both local residents and those traveling from neighbouring areas. Ample parking facilities and proximity to public transport options make The Ashcroft a convenient choice for events of all scales.

For more information visit – [www.the-ashcroft.co.uk](http://www.the-ashcroft.co.uk)

---

## WHITWORTH SKYLINE 9

**Skyline 9** will take place on **Sunday May 12**.

The route this year will run clockwise, which means we will be climbing up Rooley Moor Road... but it's a flat finish back to the Golf Club. The full walk is, as ever, 14 miles long (a proper challenge, to be taken seriously), but there will be the usual two shorter options for those for whom that is too much of a challenge: the **Western Skyline to Britannia** is 9 miles long – still stiff because it too includes the ascent of RMR – while the **Skyline Sunday Stroll** is a gentler, but varied, 3-miler, concluding at the foot of RMR.



Entry forms will appear in all sorts of locations at the start of April. Instructions for where to return them will be on the form – Seasons, and the Council Office, for certain, and hopefully the Leisure Centre, though we can't commit to that just at the moment. Entry fees will be as for the last clockwise year - £4 for the full Skyline, £3 for the Western, and £1 for the Sunday Stroll... but they go up to £6/£4/£2 if you enter after Thursday May 9 or on the day. You'll need to register at the Golf Club between 7.45 and 9.15am (no later please), then off you go, at your own pace, on your chosen challenge.

Every walker gets a (small) meal at the end, though if your chosen walk doesn't finish at the Golf Club you'll need to organise yourself a lift to get back up there. Please note that, as in previous years, no dogs are to take part in the Skyline walk. And fingers crossed, please, for trek-friendly weather.

If anyone would like to be part of the event, but doesn't want to walk, Skyline needs marshals, and backmarkers (but that does involve a bit of slow walking), and maybe one or two people to help out in the kitchen at the Golf Club. If any of those appeal please speak to Jo Furtado 07813180748 asap.



## WHITWORTH MUSEUM - from the collection

Included in the museum's collection is this stylish, green, water jug. It takes the form of a fish with an open mouth pointing straight up for pouring and a curled up tail for the handle.

This pottery design was known as a Dartmouth Fish, a gurgle, glug or gluggle jug. The name comes from the sound emitted during the pouring of the liquid from the jug. Air becomes trapped in the fish's tail when filling and 'glugs' as it escapes during pouring.

In the 1950s a pair were presented to our late Queen Elizabeth and Prince Philip and consequently the gluggle jug, in various sizes and colours, became very popular and eventually collectors' items.

The Plymouth Gin and Old Rarity Distillers had a pink one made to advertise their pink gin.

The design eventually crossed the Atlantic and the British jugs were sold to a Boston department store called Shreve, Crump and Low. These jugs were advertised as the Gurgling Cod.



The exhibit in Whitworth Museum is this American Gurgling Cod design and the stamp on the base of the jug says, "Made in England for Shreve, Crump & Low Company, Boston".

---

## WHITWORTH & DISTRICT U3A

Membership of the u3a is made up of retired and semi-retired people from the Whitworth area who wish to continue learning, make new friends and have fun. Monthly meetings are held at Hallfold United Reformed Church Hall, Whitworth, on the first Wednesday of the month from 1.15 pm for refreshments and notices followed by a monthly speaker.



On 6th March their speaker will be Jan Hicks – Bletchley Park Decoded. On 3rd April their speaker will be Mebs Ahmed: My life and career in Lancashire Constabulary. 1st May their speaker will be Izabella Donohue from Lancashire Wildlife Trust: The wonderful world of watery waders.

U3a have 17 Interest groups currently. For insurance purposes, only members can join Interest Groups. Details are available on our FB page, web site or at the meetings. You can contact the Group Leaders for information on dates, times and venues for group activities. Lynne, our Groups Coordinator can be contacted on 07718 913131.

New members are welcome for an annual membership of £15 and £2 monthly meeting subs. Anyone interested may attend two meetings before joining. A full list of speakers, interest groups and contact details can be found on the FB page and website [u3asites.org.uk/whitworth](http://u3asites.org.uk/whitworth).



# AERIALS & SATELLITE T.V.

Supplied & Fitted

Extra Points - Service Calls

**Call Neil on  
07970 677 017**

**FREE ESTIMATES**



## High Power Pressure Washing

**Path pavings cleaned  
Patio cleaning  
Driveways & Tarmac  
Decking & Cobbles  
Graffiti removal  
Garden stone walls  
Moss & algae removal**

**Eco-friendly chemicals used  
in all cleaning procedures**



**Contact Sean on  
07773 798078**



HELLO NEW  
**YARIS CROSS  
HYBRID**  
COMPACT SUV

**NOW AVAILABLE TO TEST  
DRIVE AT RRG ROCHDALE**

RRG Rochdale Toyota  
Edinburgh Way, Rochdale, OL11 2PD  
Tel: 01706 863 253  
[rrgrochdale.toyota.co.uk](http://rrgrochdale.toyota.co.uk)



[/RRGRochdaleToyota](https://www.facebook.com/RRGRochdaleToyota)



[@ToyotaRochdale](https://twitter.com/ToyotaRochdale)



Model shown is MY23 Yaris Cross Design 1.5 VVT-i Auto PWD £26,655 including optional Metallic paint at £615. Prices correct at time of being published. Terms and conditions apply. Official fuel consumption figures in mpg (l/100km): combined 54.6 (5.2) - 62.8 (4.5). Combined CO2 117-102 g/km. Hybrid electric vehicle. Figures obtained using a combination of battery power and fuel. Figures are provided for comparability purposes; only compare fuel consumption, CO2 and/or equivalent all-electric range figures with other cars tested to the same technical procedures. These figures may not reflect real life driving results. Fuel consumption, CO2 produced, and equivalent all-electric range can vary significantly depending on a number of factors, including the accessories fitted (post-registration), driving style, conditions, speed and vehicle load. All models and grades are certified according to the World Harmonised Light Vehicle Test Procedure (WLTP). All mpg and CO2 figures quoted are full WLTP figures. More information can be found by visiting: [www.vehicle-certification-agency.gov.uk/fcb/wltp.asp](http://www.vehicle-certification-agency.gov.uk/fcb/wltp.asp)

## THE POPPY AND ME PROJECT



a black poppy representing black, African and Caribbean and other indigenous soldiers and a purple poppy representing animals that have lost their lives in wars mainly dogs and horses. The 457 poppies represent the British Servicemen and women who lost their lives in the Afghanistan Conflict and all profits will be donated to the Royal British Legion.

Local manufacturers BCH (formerly Coates Engineering) made the generous offer to manufacture the poppies for free as part of their apprentices' training, and Triple 7 Refurbs, another Whitworth business, powder coated each poppy.

Poppies can be sponsored via Whitworth Town Council and a minimum donation of £20 is required. Sponsors will receive a Certificate of Sponsorship and poppies can be sponsored in memory of a family member or serviceman or woman if desired. Each certificate will be numbered to correspond to each numbered poppy. Please email Cllr David Chorlton at [clrdchorlton@whitworth.gov.uk](mailto:clrdchorlton@whitworth.gov.uk) for more details.

The project organisers would like to thank Brendan Kennedy and the team at BCH Ltd, Dean at Triple 7 Refurbs, Whitworth Town Council, Rossendale Borough Council, and Whitworth Town Council's Tourism and Leisure Committee for their support and assistance with this project.

---

## A VERY SPECIAL LOCAL RESIDENT



Whitworth Town Council were delighted to be asked to be part of a very special presentation in late November.

Lillie-Mai Davies was given a certificate or recognition for her fundraising efforts for Remembrance Day 2023 by representatives from the Armed Forces prior to November's Council meeting. All of us here at Whitworth Town Council would like to thank her for her fantastic initiative and fundraising efforts.

---

## PARLIAMENT WEEK NOVEMBER 2023

Whitworth Town Council was delighted to welcome children from St Bartholomew's Primary School as part of Parliament Week in November 2023. The children came to the Council Chamber and met and asked questions of some of our councillors. The questions that were asked covered local issues such as littering and roadworks and councillors were very impressed with the number of questions that the children had, and how polite and well-behaved Class 5 were. We hope St Bartholomew's enjoyed the visit as much as we did and the council would welcome any other schools or community groups joining us in 2024.

## Joshua Law Traditional Family



## Butchers...

- Cooked Meats (prepared & cooked on the premises)
- Bury Black Pudding
- Quality Steaks (matured for at least 21 days)
- Finest Sausages
- Finest English Spring Lamb
- Poultry, Bacon and Game
- Home Made Ready Meals (changed weekly)
- New Special Offers Every Week

## ...& Bakers

Freshly baked bread, pies and sandwich orders!

TELEPHONE ORDERS WELCOME  
FREE HOME DELIVERY

### Opening Hours:

Mon-Fri: 7.30am-5.30pm  
Sat: 7.30am-1.30pm

Tel:

**01706 852313**

739 Market St., Facit, Whitworth, OL12 8LD

**Ashworth Energy**  
Energy Assessments



**Does your business want  
to save £££ this year?**

We now broker Gas, Electric,  
Water, phone and Data Supplies.

This is a **FREE** service no matter  
how big or small your business is

Call now

**07581587990**



**Diary open for 2024/2025**

Mehndi | Weddings | Proms | Community | Corporate

For more information & to view the venue please email or direct message us on social.



01706 854130

team@the-ashcroft.co.uk

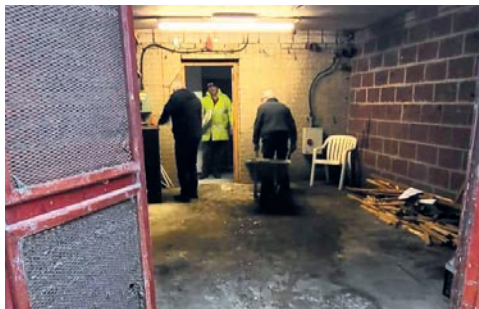
the-ashcroft.co.uk

Whitworth, Civic Hall, OL12 8DP



## IT'S OURS... SO NOW WE'VE GOT TO MAKE IT WORK

If you're on social media or you've walked past "The Baths" you'll know that something's afoot with the Leisure Centre.



On December 15 Whitworth Town Council signed off on a lease agreement, enabling Whitworth Leisure Centre Community Interest Company (the CIC) to take possession of the keys. Since then, the place has been a hive of activity and community spirit. The most visible difference is the old flume tower - long disused and getting wobbly and dangerous, it has been reduced in height and neatly capped thanks to the extraordinary generosity of local company Roscoe Portfolio.

The forecourt has been power-washed and spruced up. The overgrown area behind the building has been cut back and uncovered, rediscovering a long lost and simply quite amazing space that we look forward to seeing transformed further. By the time this edition of the Whitworth Valley News goes to print, the

dilapidated fascia boarding will have hopefully been replaced and painted, and the building will generally be looking in a much better state on the outside. If fortune is really shining, we could even see some sparkly new windows.

Inside, the entrance area has been reconfigured, relocating the reception desk with a view to creating an enticing, warm social space in its place. New alarm systems have been installed, there are some new electrical systems and areas of lighting in the pipeline. There has been extensive work done on some back rooms, on the long disused pool cover, and in general a massive clear-out of the detritus built up around the centre over time. The gym has been thoroughly scrubbed (literally!) and freshly painted, and the equipment has been checked, cleaned and, where necessary, mended in





preparation for your highly anticipated return. The emphasis on the gym is because, by the time you're reading this, it is hoped that the gym will be open again. After being a closed building for so long, the leisure centre needed urgent maintenance before it could reopen its doors to the public. Once the most urgent works were in progress, focus moved to the reception, entrance area and gym. Opening the gym provides the centre with a desperately needed income stream for repairs, maintenance and improvements to continue, so it is hoped that you are all eager to renew your acquaintance with those treadmills.



Funding is THE issue at the moment. Its absence has determined the order in which things have been and can be done. ALL of the work listed above has been done by some absolutely amazing volunteers and through exceedingly kind donations of time, expertise, and materials from local tradespeople. From the roof right down to unglamorous things like cleaning, clearing rubbish and painting, it has been a remarkable and incredibly positive few weeks.

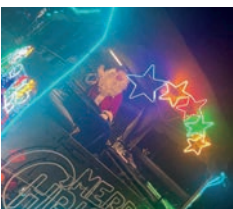
However, not everything can be done by the elbow-grease of volunteers. The centre needs further works to make it a more functional and sustainable building. There are gas, electricity, water, and insurance contracts that have had to be agreed and payments made. There are training courses to be paid for, uniforms to be bought, telephone lines to install, soon there will be staff taken on, and they, of course, must also be paid the rate for the job – the list goes on. That has needed, and will continue to need, cold cash.

Obviously, a week before Christmas wasn't ever going to be the best time to be asking people to dip into their pockets, but amazingly and in just over a fortnight over £4000 was raised on the official JustGiving fundraiser ([www.justgiving.com/crowdfunding/whitworthleisurecentre?utm\\_term=86D96VZ3D](http://www.justgiving.com/crowdfunding/whitworthleisurecentre?utm_term=86D96VZ3D)) by New Year's Day. The total continues to rise daily so massive thanks are due to all who have contributed either by donating or by spreading the word. As fantastic as this really is, it's nowhere near enough, of course; the people behind all this happening have no official source of funding, hence the need to get the gym open and earning. The local fundraising will have to continue for some while yet.

In addition to the fundraiser, in the background, some CIC members have been applying to various external funders, some for small grants of, say, £5-10,000, a couple much bigger than that. It should be pointed out that those funds could not be formally applied for before the lease was signed, and it will be months before any of them come to fruition – and only if whoever the CIC applies to believes that this project is both desirable and do-able.



That is what Whitworth Town Council and the CIC believe – that is why the Leisure Centre is once again being resuscitated. A full recovery depends not just on the will of the Council or the wit of the CIC – it needs everyone who felt that the closure of a rescueable social asset in Whitworth was a crying shame (to put it mildly) to commit themselves to volunteering, offering financial help, taking out memberships and using the facilities.



## WREATH MAKING

The TLC had another fabulous turn out for this year's Wreath Making. The afternoon session was well attended, some fabulous wreaths were made and everyone enjoyed the mulled wine. Thanks to everyone who bought a ticket! Thanks to Lindsay for helping to organise this event and tutor the attendees on the day.

## CHRISTMAS TREES

This year we sold over 70 Christmas trees which were installed the length and breadth of Whitworth. Once again, the trees lit up Whitworth and brought Christmas here. With the trees at either end of the village, the one at Moss Side Street and the ever-growing number of lights on the main road in the Village, Whitworth really looks magical at Christmas not just for the people who live here but for visitors and people passing through. A special thank you to Les Hirst and Steve Parker who work so hard to make this event work.

## SANTA EXPRESS

Our 4th year of running the Santa Express saw the route controversially extended to deepest, darkest Bacup town centre! Both nights were very well attended as Father Christmas had managed to organise two rain- and snow-free nights. He and his elves were able to visit all across Whitworth making lots of children (and grown-ups!) very happy. A big thank you to Steve and Linda Parker for the use of their truck and also to Father Christmas for taking time out from his incredibly busy pre-Christmas schedule to come and visit Whitworth.

## THE WORLD FAMOUS WHITWORTH DUCK RACE 2024



As ever the TLC like to kick off the beginning of the year with our New Year's Day Duck Race which is still growing as an event. This year we sold out all 2,500 yellow ducks, helped by a significant increase in online duck sales. The ducks raced down the overflow from Cowm Reservoir, raising money to fund all the events we run in Whitworth every year. This year, as with previous years, lots of the public took time to watch the race and buy ducks on the day. Due to the heavy rain over Christmas, there was a lot more water in the reservoir which meant that the race was over very quickly. All ducks were safely recaptured and are currently in training for 2025.

---

## WOULD YOU LIKE TO HELP TO ORGANISE SOME OF THE TOURISM AND LEISURE COMMITTEE EVENTS?

The above events can only take place due to the fantastic volunteers that help to plan, organise and support the events on the day. Do you have a few hours to spare that you would like to spend helping to plan and improve our events? If so, please come along to a TLC meeting and share your thoughts and ideas. Please see the Town Council website for the date of the next meeting. The Committee are very friendly and always appreciative of new members. See you there!



## Plumbing & Heating Services

Professional, Reliable, Affordable

- For all heating systems
- Installation
- Service
- Repairs



Mobile: 07515 100 161

Tel: 01706 653 581

Email: brad@bowerheatingservices.co.uk

**RAPET**  
Rochdale Ancient Parish Educational Trust

## Rochdale Ancient Parish Educational Trust

provides financial assistance for clothing, tools, instruments or books to enable local young people in education or to assist their entry into a profession

For more information or help to apply for small educational grants, contact Rachel, Town Clerk, on 01706 852018 or email [info@whitworth.gov.uk](mailto:info@whitworth.gov.uk)

# HOUSEWORX

Washing and ironing  
Dry cleaning  
Alterations and repairs

*COLLECTION AND DELIVERY AVAILABLE*

## 01706 854379

Commercial and domestic cleaning

## 07908 242 294

539 Market Street, Whitworth  
OL12 8QW

## Facit Garden Centre

### Keeping cosy in the cold weather

### Logs and coal available

On brighter days add some spring colour to your garden with plants and bulbs

Open Fri, Sat, Sun all day  
Off Grange Road, Facit, Whitworth





**Whitworth**  
Town Council

# 2024

# DIARY DATES

**SAT  
27TH  
APRIL**

## THE MAYOR'S SPRING PARTY

The Ashcroft (Civic Hall), Whitworth, OL12 8DP

## ANNUAL MEETING OF THE PARISH

The Ashcroft (Civic Hall), Whitworth OL12 8DP

**THURS  
9TH  
MAY**

**THURS  
16TH  
MAY**

## ANNUAL GENERAL MEETING (MAYOR MAKING)

The Ashcroft (Civic Hall), Whitworth, OL12 8DP

## REMEMBRANCE SUNDAY

Memorial Gardens, Whitworth, OL12 8DP

**SUN  
10TH  
NOV**

**MON  
9TH  
DEC**

## COMMUNITY CAROL SERVICE

The Ashcroft (Civic Hall), Whitworth, OL12 8DP



## SPRING FLOWER EXTRAVAGANZA AT THE ASHCROFT SATURDAY 4TH MAY 2024

Whitworth will once again play host to a National Horticultural event, when the East Lancs Group of the Alpine Garden Society stage another huge Spring Flower Show at The Ashcroft on Saturday 4th May 2024.

The event will feature over 140 individual classes ranging from rare alpine gems to bulbs, dwarf conifers, hardy plants, ferns and mini gardens. The organisers hope that Whitworth folk will again be tempted by a raffle, free parking, plant sales, bar and excellent refreshments. Open from 11 am until 3.30 pm on 4th May, entry for the general public is only £4 per person. There will be three or four superb nurseries in attendance selling a wide range of alpine and garden plants and leading exhibitors will travel from across the UK. Over the years Whitworth has rightly gained a proud reputation as 'The Friendly Show' among enthusiasts.

The East Lancashire Group still holds regular monthly meetings, now at Rawtenstall, and additional Zoom meetings are drawing large international audiences. New members are always warmly welcomed and encouraged. Group Secretary Cliff Booker can be contacted on 01706 534626, and Show Secretary John Dower on 01928 733419.








### Specialist Dementia Care Home

Overlooking the Rossendale Valley, our Willow Lane community provides a safe, secure and responsive environment for the effective care of people living with dementia. With relaxing décor, bespoke features and dedicated staff - we have created a community where our residents can feel at home, not in a home.

**Our home offers:**

- ✓ Purpose-built Dementia care setting
- ✓ 14 en-suite rooms
- ✓ Nurse call sensors
- ✓ Light assisted guidance
- ✓ Dedicated activities co-ordinator
- ✓ Communal areas
- ✓ Outside space & garden
- ✓ Higher staff ratios
- ✓ In-house cooks

**01706 659 917**  
[enquiries@whitworthcare.org.uk](mailto:enquiries@whitworthcare.org.uk)

9.8

out of 10

carehome.co.uk



## A LOT WORTH CELEBRATING



Few things surprise the volunteers of the Lighthouse but the support they received at Christmas from our local schools, churches, businesses and public increased again! Many of the 200+ people who were helped at Christmas said that without the Lighthouse they would have not had a Christmas dinner, let alone any of the other food and gifts which were given.

The Lighthouse sometimes finds itself having to do things through necessity rather than choice. They like to keep their service discrete, giving clients some privacy & dignity at what's often a difficult and emotional time, but to continue operating they must promote themselves, using the press and social media to publicise the work they do, otherwise people won't know how to support them. Even now, some people say they are surprised to learn Whitworth has a foodshare.



Public awareness of the work of the Lighthouse also brings unexpected events, like the several awards which were won last year, the Women of Whitworth Rose Award and the prestigious Rossendale Business 'R-Award' being the two most recent. These unsought awards are a huge encouragement to the volunteers, as well as an indication of the standing the Foodshare now has within the Whitworth Community.

Lighthouse opening hours are Tuesday & Thursday 10am-4pm, Saturday 10am-3pm.

For an appointment or to ask about volunteering tel. or text: 07922 951 096

Donations can also be made by bank transfer using sort code: 30-98-97, Acc no: 55373062

---

## MRS LYNDA BARNES



Just as the Whitworth Valley News was going to press, Whitworth Town Council received the sad news that the former councillor and Mayor of Whitworth, Mrs Lynda Barnes, had passed away.

Everyone here at the council sends our thoughts and best wishes to all of Lynda's family and friends at this sad time. Lynda was a much-loved, well-respected member of Whitworth Town Council and served as Mayor twice, 2015 to 2016 and 2019 to 2021. She stayed on as Mayor during Covid and helped with the Town Council's community response to the emergency. Mrs Barnes joined her husband, David, as a member of Whitworth Town Council in 2011 and served on many committees during her time as a councillor.

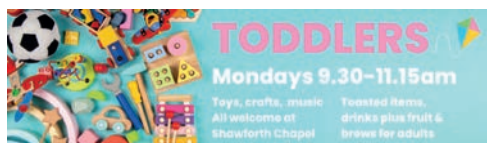
The picture accompanying this piece was taken whilst Lynda was Mayor for the second time, at a fundraising event for Springhill Hospice, and shows how much she enjoyed her time representing our town. She was passionate councillor who cared deeply for the town that she lived in, and she will be greatly missed by all.

## ROSSENDALE METHODIST CHURCH IN SHAWFORTH

<b>SUNDAYS</b>	10.30am	Sunday Service. All welcome and stay for a brew afterwards
<b>MONDAYS</b>	9.30am - 11.15am	Toddler Group
<b>TUESDAYS</b>	7pm - 9pm	Whitworth Community Choir rehearsal
<b>THURSDAYS</b>	11.15am - 12pm 8pm	Little Bookworms Booking details <a href="http://little-bookworms.class4kids.co.uk">little-bookworms.class4kids.co.uk</a> Model Flying Club (last Thursday in the month)
<b>FRIDAYS</b>	10.30am - 12pm	Community Drop In - tea/coffee/toast and a natter. All welcome
<b>SATURDAYS</b>		Seasonal Coffee and Lunches. Look out for information



**Superintendent Minister Revd. David J Burrow**  
**Tel 01706 602882**  
**For room hire (children's parties, meetings**  
**etc. wi-fi available) contact 07799 304 405**



---

## ANNUAL MEETING OF THE PARISH

Every English town or parish must hold an Annual Meeting of the Parish for electors registered in the area. This year, Whitworth's Annual Meeting of the Parish takes place on Thursday 9th May at 7:30pm, at The Ashcroft.

The meeting will be quorate (legal) if just two electors are present. Although chaired by the Mayor, this is not a council meeting. It is a meeting for all Whitworth people to get an overview of what is currently happening in the town, looking at the work of various organisations serving Whitworth, and offering electors the opportunity to raise queries and make observations. It is usually over within the hour so why not come along, everyone is welcome. See you there!

For more information, contact Rachel Hodson, Town Clerk on 01706 852018 or email [info@whitworth.gov.uk](mailto:info@whitworth.gov.uk)

**ADVERTISE YOUR BUSINESS HERE**

FOR ONLY £32.50 (PLUS VAT) FOR A 1/4 PAGE AD

**FREE MAGAZINE DELIVERED TO EVERY HOUSE**

**& BUSINESS IN WHITWORTH**

LIMITED SPACE AVAILABLE - CONTACT 01706 852018 OR  
[INFO@WHITWORTH.GOV.UK](mailto:info@whitworth.gov.uk) FOR MORE DETAILS



## WHITWORTH VALE AND HEALEY BRASS BAND

The band would like to thank the residents of Whitworth for their support during the street carolling season. The band are very grateful for all of the lovely comments received and would like to wish everyone all the very best for 2024!

The new year sees Whitworth band beginning rehearsals for the regional competition in Blackpool on Sunday 25th February. The band will be competing in the first section after the recent success in becoming National second section champions.

We are delighted to be welcoming Zoe Wright to be part of our youth development. Zoe has a wealth of banding experience both locally and nationally.

### Dates for the New Year:

- Whitworth Veteran's Band Concert - Sun 11th Feb - 3pm - The Ashcroft
- Northwest Regional Championships - Sun 25th Feb - All day - Winter Garden's, Blackpool
- Sunday 10th March - Boarshurst Band Club (evening)

For further information regarding the bands or bookings please ring Michael Whitby on 852613 or call into the band club between 6 - 8.30pm on a Wednesday (Youth band night).

---

## CANCER RESEARCH UK WHITWORTH LOCAL COMMITTEE




The Committee would like to thank everyone for their continued support during 2023 and wish everyone a happy New Year for 2024. Early events for 2024 are a quiz night at the Band Club on 3rd February and a meal at the Rose and Bowl on Thursday 14th March.

Events since last their report include a fund-raising meal at Pepe Nero at the end of November, which raised £825. Many thanks to Anna, David and staff for a fantastic meal and their hospitality and generosity, not forgetting all those who donated raffle prizes and auction lots.

Their annual carol concert with Whitworth Vale and Healey band raised £845 for CRUK. At this event a cheque for £10,000 was handed over to Steve Lyons, the Senior Scientific Officer from the Patterson Institute Manchester, who gave the packed audience of 200 an insight into how the monies raised by the local committee were used to purchase vital research equipment, a concept that has always been part of the committee's agenda. One in two people will now be diagnosed with cancer but the good news is that the 50% are now surviving for 10 years or more.

If you would like to attend any events, make a donation to CRUK, or join the committee, or if you would like to undertake any activity to raise funds and need advice, please contact them on the numbers given below. The committee is really in need of new members to ensure the work they undertake in the village is continued.

Contact numbers: Michael Whitby 852613, Elaine Bagshaw 853935 and Arnold Ashworth 343424




**Phil Jones  
Plumbing and  
Heating**

**DOMESTIC AND COMMERCIAL  
PLUMBING AND HEATING  
REPAIRS AND  
INSTALLATIONS INC LPG**

For more information please call me on  
07976 886926  
or email me on [pjplumbingandheating@yahoo.com](mailto:pjplumbingandheating@yahoo.com)

**CROWTHER**  
optometrists  
OUR SERVICE IS AS UNIQUE AS YOUR EYES



For a friendly and professional service from an Independent Optometry Practice established for over 50 years.

**LOOK NO FURTHER**

33/35 Market Street, Bacup, Lancs., OL13 0AJ  
Tel: 01706 874631

**WHITWORTH  
DOUBLE GLAZING  
REPAIRS**

**ALL FOGGED UP?  
*DRAFTS?***

**LOCKS & HANDLES  
HINGES**

**ANY DOUBLE GLAZING  
PROBLEM SOLVED  
NO VAT  
30 YEARS EXPERIENCE  
JUST CONTACT RICHARD**

**07768 243081**



**JJS ELECTRICAL  
CONTRACTORS**

**RESIDENTIAL & COMMERCIAL & INDUSTRIAL**

All works undertaken fully guaranteed !  
Full installation & testing of EV charge points.

Contact us on 01706 872 728 or email  
[mail@jjsselectricalcontractors.co.uk](mailto:mail@jjsselectricalcontractors.co.uk) to get a  
free no obligation quote

[www.jjsselectricalcontractors.co.uk](http://www.jjsselectricalcontractors.co.uk)

**NIIEC** APPROVED CONTRACTOR

**TRUSTMARK** Government Endorsed Quality

**SafeContractor** approved

**Approved for Zero Emission Vehicles**



Monday	1pm-7pm
Tuesday	9am-5pm
Wednesday	Closed
Thursday	9am-5pm
Friday	9am-5pm
Saturday	9am-1pm
Sunday	Closed

**Whitworth Library, right at the heart of the community, where you'll always get a warm Whitworth welcome. Check out these activities at the library for everyone to enjoy. All are FREE unless stated.**

#### **Mondays**

- 10:00 – 10:45 **Fitsteps** Upbeat dance exercises with Jan (£5.50)  
 11:00 – 11:45 **Pilates** Improve your strength, posture and balance with Jan (£7.50)  
**£11.00 for both above classes.** Contact Jan Jenkins Fitness on 07939 087122  
 14:00 – 16:00 **Knit and Natter** Bring your knitting and enjoy a brew and good conversation

#### **Tuesdays**

- 10:00 – 12:30 **Scrabble Club** Great company and good fun – why not join us?  
 14:00 – 14:30 **Storytime and Crafts!** Stories and themed activities (18 months - 4 years)  
 14:00 – 15:00 **Little Steps** featuring games, sing-alongs, stories and crafts on last Tuesday of month  
 15:00 – 17:00 **U3A Wellbeing** 1st Tuesday of month - 07762 757925 (Sheila) for info

#### **Wednesdays**

- 10:00 – 11:30 **Rossendale Children and Family Wellbeing Session** for children aged 0-5 yrs  
 12:00 – 13:30 **Meditation and Wellbeing** Contact Sheila Daly for details (07762 757925) (suggested £5 donation)  
 18:00 – 19:00 **Line dancing** Contact Sheila Daly for details (07762 757925)  
 19:00 – 20:30 **Yoga, Pilates and Relaxation** Contact Sheila Daly for details (07762 757925) (suggested £6 donation)

#### **Thursdays**

- 09:30 – 10:30 **Learn My Way** Get online – start your digital journey today!  
 10:00 – 11:30 **Shared Reading Group** All welcome!  
 10:00 – 12:00 **U3A Family History** on last Thursday of month. T. 07790192120 (Jean) for info  
 13:30 – 15:30 **U3A Art Group** 1st Thursday of month. T. 07800 820096 (Lindsay) for info  
 14:00 – 15:00 **U3A Creative Writing** 1st Thursday of month. T. 07903 570008 (Kay) for info  
 14:00 – 15:30 **U3A Flower Arranging** 3rd Thursday of month. T. 07411 520771 (Nina) for info

#### **Fridays**

- 10:15 – 11:00 **Baby Bounce and Rhyme** (birth to 3 yrs.)

#### **Saturdays**

- 10:30 – 12:00 **Lego Club** (for all ages)  
 10:30 – 11:30 **Garden Gang** (for children of all ages)

... and newspapers and books, including audio and large print. There's information on a whole host of topics. You are guaranteed a welcome and support from the friendly library team. You can brush up your digital skills on the public computers, with free Wi-Fi and also print and photocopy too.

If you, a relative, or someone you care for, can't get to the library, the team can bring the library home to you, via the Home Library Service. Get in touch by calling 0300 123 6703 and ask to be put through to Whitworth Library, or email: [whitworth.library@lancashire.gov.uk](mailto:whitworth.library@lancashire.gov.uk)

Follow the library or the Friends of Whitworth Library Group Facebook page, for news about events. You can also contact [friendsofwhitworthlibrarygroup@gmail.com](mailto:friendsofwhitworthlibrarygroup@gmail.com) to be added to the mailing list.



## STRONGER TOGETHER

Stronger Together would like to thank Rossendale Leisure Trust in helping them to secure The Ashcroft as their new venue. This will enable them to welcome more of the wider community to their group which meets on a Monday, 11am until 2pm. Stronger Together would also like to thank Whitworth Town Council for all their support.

The group had a fantastic Christmas party which included a visit from Santa who handed out gifts, and a visit from the dancing elf. St Bartholomew's Primary School also attended and sang carols to the group. The following week Stronger Together served over 60 meals, which consisted of a hot cooked Christmas dinner followed



by entertainment from Whitworth u3a Ukulele Band and singing by David Elmer. A great time was had by all. Stronger Together would like to thank all the volunteers who continue to help them - their contribution ensures the group continues to grow each week and the sessions could not be put on without them.

Stronger Together look forward to a fantastic 2024 in their new venue with lots of exciting things being planned. The first event in the calendar is their one-year anniversary party on February 18th with a fun-packed day planned to be had by all. Tickets are available from the Ashcroft - £5 for adults, £2 for children.



## VETERAN PUBLISHES BOOK OF FALKLANDS MEMORIES

A Falklands veteran from Rossendale-based charity Veterans In Communities has compiled a book of prose and verse recollections.

Outreach Worker Steve Butterworth attends the Rochdale Breakfast Club every Thursday and spent eight years in the Navy. He was on HMS Intrepid in the Falklands, working as a catering accountant and medic helping the wounded.

His book, entitled 'Even the Shadows had Shadows - Poems and Reflections of the Falklands Campaign in 1982', contains veterans' thoughts and those of an islander who was just 11 when the island was invaded.

Steve wrote a poem, 'Pale Maiden' about a flower that grows on the island, which was made into a song.

He said: *"Throughout the annals of history, men and women who have experienced the horrors of war and conflict around the globe, have returned home to little or no understanding of the places and situations they have found themselves in. The sights, sounds and smells of war are not something easily forgotten or dealt with. The written word of the combatant, rather than the spoken, has through the generations communicated these experiences."*



Steve Butterworth and inset his book of recollections of the Falklands Conflict

The book is available from HMS Hermes website, £18.99 hardback or £12.99 paperback. Proceeds benefit the South Atlantic Medal Association, SAMA 82.

[www.vic.org.uk](http://www.vic.org.uk) phone 01706 833180

# VILLAGE CARS and WHITWORTH TAXIS



**01706 854545**

**01706 854343**

**07592 953822**

## MITCHELL'S MOTOR SERVICES HALFWAY GARAGE

MOT preparation, presentation & repair  
Pick up delivery service available  
(by appointment)  
Diagnostics, supported by the latest  
'Snap On' software  
Servicing / Repairs



cars, vans, 4x4's  
all makes, all models  
no job too large or small

**01706 854300 • 07977 458646**  
721 Market Street, Facit, Whitworth, OL12 8LD

## NORMAN HILL FABRICATIONS



Gates • Railings  
Security Grilles • Site Welding

Unit 14, Daniel Street Industrial Estate,  
Whitworth  
OL12 8BX

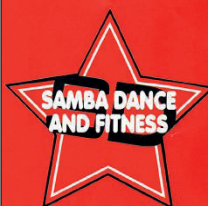
Tel: 01706 852184

Mobile: 07980 957351

Email: [norman@normanhillfabrications.co.uk](mailto:norman@normanhillfabrications.co.uk)

[www.normanhillfabrications.co.uk](http://www.normanhillfabrications.co.uk)

Call now for a FREE,  
no obligation quote!



613 Market Street,  
Whitworth, OL12 8DY

☎ **01706 854960**

[www.sambadanceandfitness.co.uk](http://www.sambadanceandfitness.co.uk)

**Freestyle / Disco**  
**Street / Hip Hop**  
**Latin American**  
**Ballet & Tap**  
**Ballroom**  
**Cheerleading**  
**Breakdance**  
**Drama**

- **Private Lessons**
- **Competitions & Exams**
- **or Just for Fun**

**Also a Range of Fitness Classes for all ages**



## WHITWORTH TOWN COUNCIL PRECEPT 2023/2024

Whitworth Town Council has this year set a net budget of £69,901. The Council has worked hard to keep the increase in the precept to a minimum, which has been difficult in the current financial climate. Statutory wage increases and inflationary increases in office rent has meant that Council has had to take the difficult decision to increase the Precept this year.

This past year has seen some pressures on finances and significant increases in costs, but the Town Council's wise investments are still providing a healthy dividend, thanks to favourable interest rates. The Council is facing tough times in the next few years due to rising costs in the current economic climate. Expenditure includes salaries for the Town Clerk (30 hours), our full-time Whitworth Town Caretaker, who makes a significant impact on the town's cleanliness, and our Parish Lengthsman, who tackles repairs and general maintenance around the town and opening of the toilets at weekends.

The Town Council utilises social media and their website to encourage a two-way dialogue with the community. The Valley News magazine, produced quarterly, continues to be hugely popular, and the Council's Tourism and Leisure Committee has a variety of leisure and cultural events planned for the year ahead. The Town Council continues to promote Whitworth as a great place to live, and lobbies hard for the best possible services for the town. It is at the forefront of tackling crime through the sponsorship of the Police Community Support Vehicle and facilitates monthly multi-agency meetings attended by all the local agencies.

To conclude, the Town Council continues to be proud of its achievements and looks forward to working with and for the people of Whitworth during the forthcoming financial year.

	2024/25	2023/24	2022/23
Employee's (Town Clerk / Town Caretaker)	£ 67,500	£ 57,728	£ 54,812
Parish Lengthsman (salary / materials)	£ 5,000	£ 4,500	£ 4,500
Administrative Expenses	£ 11,800	£ 11,100	£ 13,260
Statutory and Civic Events / Expenses	£ 5,320	£ 5,820	£ 4,380
Audit Fee	£ 420	£ 400	£ 400
Training / Member Expenses	£ 800	£ 650	£ 450
Insurance	£ 3,000	£ 1,600	£ 1,477
Grants to Outside Bodies	£ 2,000	£ 2,000	£ 500
Special Projects	£ 13,750	£ 9,368	£ 7,077
Street Floral Displays	£ 1,000	£ 600	£ 600
Whitworth Valley News Magazine	£ 2,500	£ 1,500	£ 1,000
Investment Income	-£ 21,400	-£ 19,000	-£18,000
RBC devolved funding	-£ 22,989	-£ 16,082	-£12,626
LCC devolved funding	-£ 800	-£ 800	-£ 500
Contingencies	£ 2,000	£ 1,000	£ 1,000
<b>COST OF TOWN COUNCIL LEVY (£)</b>	<b>£ 69,901</b>	<b>£ 60,384</b>	<b>£ 58,330</b>
Number of band 'D' equivalent units	2,257	2,225	2,171
<b>Council Tax per band 'D' property (£p)</b>	<b>£ 30.97</b>	<b>£ 27.14</b>	<b>£ 26.87</b>
Percentage increase per band 'D' property	14.1%	1.0%	4.1%
Actual increase per band 'D' property	£ 3.83	£ 0.27	£ 1.06



# LOCAL TRADES LIST

## HEALEY DELL HERITAGE CENTRE AND TEAROOMS

Fully Licensed tearoom and free venue hire  
Open Thursday to Sunday from 10am to 5pm  
Dell Road, Rochdale  
Bookings and enquiries 01706 350 459  
hello@healeydelheritagecentre.co.uk  
www.healeydeltearooms.co.uk

## CJ ROTHWELL LANDSCAPING AND DRAINAGE

cjrothwell@hotmail.com  
Tel: 07846 107 922  
39 Rawstron Street, Whitworth

## RLH GAS & PROPERTY SERVICES

Richard Lyon-Hayes - Gas Engineer  
Servicing, installation & repairs, kitchen & bathroom  
Tel: 07970 470 019 www.rlhgasc.co.uk  
rlhgascandpropertieservices@yahoo.co.uk  
GAS Safe registered 531279  
33 Oak Street, Shawforth

## SEAN BRADLEY

High power pressure washing paths & patio cleaning driveways  
& tarmacking, decking & cobbles, graffiti removal, garden  
stone walls, moss & algae removal, plus window cleaning  
Tel: 01706 879 928 / 07773 798 078  
Seanbrad09@gmail.com  
28 Douglas Road, Bacup

## ANDREW ROBINSON

Painting and Decorating  
Tel: 01706 63979 / 07967 203 484  
4 Meadow Head Avenue, Whitworth

## PETER RICHARDSON

Painter and Decorator  
Tel: 01706 854 729 / 07957 758 928  
Over 30 years' experience, no job too small  
9 Heatherlands, Whitworth

## PHIL JONES

Plumbing and Heating  
LPG (Gas Safe REG)  
Tel: 07976 886 926  
pjplumbingandheating@yahoo.com  
4 The Hedgerows, Whitworth

## OPENREACH Window & UPVC Cleaning

Carpet & Upholstery Cleaning Jet Washing  
Tel: 0800 617 679  
openreach-wcs@tiscali.co.uk  
www.openreach-wcs.co.uk  
35 Westgate, Whitworth

## ETERNAL CEREMONIES - Tina Hall

Celebrate, creating unique and bespoke ceremonies to  
celebrate all those special occasions.  
Namings, Weddings and Funerals.  
FB page - ETERNAL CEREMONIES  
Tel: 07834 924 626  
tinaann.hall@yahoo.com

## MACLEOD PODIATRY

Bsc (Hons) qualified HCPC registered and  
fully insured podiatry service  
Available for home visits or clinic appointments  
Tel: 07728 723657 macleodpodiatry@hotmail.com  
(within the pharmacy AJ Nuttall, 603 Market St, Whitworth)

## CHARLIE PRICE GARDENING SERVICES

Covering all area of landscaping - fencing, decking, gates,  
turfing, shed bases, paving, pergolas, artificial grass, hedge  
cutting and garden maintenance  
Tel: 07925 141783 charliedavidprice@gmail.com

## PHOTOGRAPH RESTORATION

We restore old or damaged photographs, remove or add items  
from photographs, improve poor photographs, provide prints  
from negatives and more!  
Tel: 01706 852341 / 07762382407  
billingsley212@btinternet.com www.abat.co.uk

List your business for  
£6.25 + VAT per edition!

01706 852018  
info@whitworth.gov.uk

This community magazine is produced by  
Whitworth Town Council. It is distributed to 4,000  
properties in Whitworth four times a year.

Editorial content is carried free of charge;  
advertising rates can be provided upon request.

Whitworth Town Council cannot be held  
responsible for the accuracy of any information  
provided for submission by outside organisations,  
the quality of service offered by advertisers, or  
the content of adverts within the magazine.

## CROSSWORD ANSWERS see pg 7 for the puzzle





**Lancashire  
Constabulary**

police and communities together

**IT IS REALLY IMPORTANT THAT ALL CRIMES ARE REPORTED**

**PC SCOTT BENTLEY IS THE DEDICATED POLICE OFFICER FOR WHITWORTH,  
YOU CAN CONTACT HIM ON 2973@LANCASHIRE.POLICE.UK**

**ALTERNATIVELY CONTACT COMMUNITY PCSO 7356 HEIDI KIRKBRIGHT  
07970 970878 OR 7356@LANCASHIRE.POLICE.UK**

**ADDITIONALLY YOU CAN REPORT A NON-URGENT CRIME OR INCIDENT,  
PLEASE DIAL 101 OR VISIT  
WWW.LANCASHIRE.POLICE.UK/CONTACT-US/HOW-DO-I-REPORT-A-CRIME**

**FOR EMERGENCIES DIAL 999**

**SIGN UP TO "IN THE KNOW" TO RECEIVE ALERTS AROUND CRIME PATTERNS IN WHITWORTH  
STAYINTHEKNOW.CO.UK/LANCASHIRETALKING**

---

**Lancashire County Council:**

0300 123 6701 (general enquiries)  
[www.lancashire.gov.uk](http://www.lancashire.gov.uk)

**Highways** 0300 123 6780

Email [highways@lancashire.gov.uk](mailto:highways@lancashire.gov.uk)  
Out of hours social care emergencies  
0300 123 6720

**Rossendale Borough Council:**

01706 217777 (council tax, bin collections  
and other services)  
0300 222 5944 (revenues and benefits)  
0300 22 5946 (out of hours emergencies)  
[www.rossendale.gov.uk](http://www.rossendale.gov.uk)

**The Lighthouse Community Foodshare:**

551-553 Market Street, Whitworth  
Tue & Thu (10am-4pm)  
Sat (10am-3pm) by appointment only  
[lighthousefoodshare@gmail.com](mailto:lighthousefoodshare@gmail.com)  
07922 951 096

**Together Housing:**

0300 555 5556 (general enquiries)

**Homestart:**

01706 214621 / [emma@homestartrbh.co.uk](mailto:emma@homestartrbh.co.uk)  
[www.home-start.org.uk](http://www.home-start.org.uk)

**Carers Link Lancashire:**

01254 387444  
[info@carereslink.net](mailto:info@carereslink.net)  
[www.eastlancscareres.org.uk](http://www.eastlancscareres.org.uk)

**Citizens Advice Rossendale:**

Financial, welfare and benefits advice  
0300 456 2552  
[www.carh.org.uk](http://www.carh.org.uk)

**The Samaritans:**

01706 830999  
(Freephone) 0800 116 123

**Universal Credit:**

(Freephone) 0800 731 9344

**Lancashire Volunteer Partnership:**

Befriending service for people who want  
someone to talk to  
[www.lancsvp.org.uk](http://www.lancsvp.org.uk)  
07779 972114

**Initial Response Service**

0800 013 0707

For urgent or general mental health issues

# WHITWORTH TOWN COUNCILLORS

## FACIT & SHAWFORTH WARD

**Tom Aldred** (Labour): 01706 852183 • [atomaldred@aol.com](mailto:atomaldred@aol.com)

**Louise Burton** (Independent): 01706 852018 • [info@whitworth.gov.uk](mailto:info@whitworth.gov.uk)

**David Chorlton** (Independent): 07939 218266 • [cllrdchorlton@gmail.com](mailto:cllrdchorlton@gmail.com)

**Kim Olaolu** (Independent): 07434 034784 • [cllrkimolaolu@gmail.com](mailto:cllrkimolaolu@gmail.com)

**Sarah Rhodes** (Independent): 07891 269998 • [cllrsarahrhodes@whitworth.gov.uk](mailto:cllrsarahrhodes@whitworth.gov.uk)

**Janet Whitehead** (Independent): 07795 577647 • [cllrjanetwhitehead@whitworth.gov.uk](mailto:cllrjanetwhitehead@whitworth.gov.uk)

## HEALEY & WHITWORTH WARD

**Gareth Baron** (Independent): 07773 307669 • [cllrbaron@gmail.com](mailto:cllrbaron@gmail.com)

**Robbie Blezard** (Community First): 07506 609226 • [cllrrobbieblezard@whitworth.gov.uk](mailto:cllrrobbieblezard@whitworth.gov.uk)

**Alan Neal** (Community First): 07817 414721 • [alanneal@rossendalebc.gov.uk](mailto:alanneal@rossendalebc.gov.uk)

**Dayne Powell** (Community First): 07795 022564 • [dayne.powell@outlook.com](mailto:dayne.powell@outlook.com)

**Mike Royds** (Community First): 07811 994458 • [cllrmikeroysd@whitworth.gov.uk](mailto:cllrmikeroysd@whitworth.gov.uk)

**Michael Whitworth** (Community First): 07850 910321 • [cllrmikewhitworth@gmail.com](mailto:cllrmikewhitworth@gmail.com)

---

## WHITWORTH TOWN COUNCIL OFFICES

The Ashcroft, Market Street Whitworth, OL12 8DP

Contact: Rachel Hodson, Town Clerk

Tel: 01706 852018 • Email: [info@whitworth.gov.uk](mailto:info@whitworth.gov.uk) • [www.whitworth.gov.uk](http://www.whitworth.gov.uk)

Office hours: Mon–Fri 9.30am–2pm

## FORTHCOMING WHITWORTH TOWN COUNCIL MEETING DATES

All the following Thursdays: 22nd Feb, 21st March, 18th April (TBC) and 16th May  
All meetings are open to the public and take place at 7.30pm in the Council Chamber.  
See the website for details or contact the Town Clerk.

---

## ROSSENDALE BOROUGH COUNCILLORS

### FACIT & SHAWFORTH WARD

Scott Smith and Janet Whitehead

### HEALEY & WHITWORTH WARD

Dayne Powell and Alan Neal

## LANCASHIRE COUNTY COUNCILLOR

### Councillor Scott Smith

[Scott.Smith2@lancashire.gov.uk](mailto:Scott.Smith2@lancashire.gov.uk)  
07891 695962

## MEMBER OF PARLIAMENT

### Jake Berry MP

0207 210 5000 (House of Commons)  
01706 215547 (Constituency office)  
[jake.berry.mp@parliament.uk](mailto:jake.berry.mp@parliament.uk)  
[www.jakeberry.org](http://www.jakeberry.org)