

Whitworth

VALLEY NEWS



PRODUCED BY
Whitworth
Town Council

BUSINESS UPDATES

MAYOR'S MESSAGE

LOCAL NEWS



Whitworth Rushcart
Sunday 3rd September

BunnyBoilers

Gas | Central Heating | Plumbing

Installation,
Service & Repair

All types of work undertaken



Call for a
free
quotation!

Michael Bunnell | 07792 635826

DAYTONA DRIVING SCHOOL



Darren Lawler, ADI

- Local Whitworth Instructor
- Pass plus courses
- Motorway and refresher lessons



07814 566985

darrenjlawler@hotmail.co.uk
www.daytonadrivingschool.co.uk

Fill your belly at



@HealeyDeli @healeydeli21

Afternoon Tea

Graze boxes

Cold Buffets

Hot pies / party trays

Grazing tables

Hog Roast

BBQs

Quotes given on an individual basis please contact us for more information!

We can cater for all dietary requirements.



Contact us

Tele - 07368682653

Email - hello@healeydeli.co.uk

Facit Garden Centre



The nights are drawing in ...
Get your stock early!

Smokeless coal
kiln dried logs
kindling and chimenea wood

open Fri, Sat and Sun all day
Off Grange Road, Facit, Whitworth

MESSAGE FROM THE MAYOR

Dear Whitworth Residents and Friends,

What a busy few months I have had in my new role as your Mayor. After a lovely Mayor-making in May, where I received the Mayoral chains surrounded by family and friends, I was straight into my duties of representing Whitworth people when I attended the Mayor-making of the new Mayor of Rossendale the very next day.

I had the pleasure of welcoming Mayors from Hebden Royd, Rossendale, Rochdale and Todmorden to my Civic Service held in June at St Bartholomew's Church. Many thanks to all who attended and special thanks to Reverend Laura Brincombe for her wonderful service.

My wife Glen and I have been delighted to attend the Samba Dance & Fitness showcase at the Ashcroft followed the very next day by a concert from Whitworth Vale & Healey Band at Hallfold. Both events were very entertaining and proved what a fantastic talent we have right here in Whitworth.

Next came our visitors from our German twin town Kandel, a welcoming dinner at the Rose Bowl was enjoyed by all, unfortunately, we couldn't join them on their days out but once again met up with them at Il Pepe Nero for their farewell. Friday 8th July saw us welcomed to WAMDS production of Little Women, what a superb show this was, nothing amateur about this performance.

A real highlight for us was attending and presenting some of the awards at the Whitworth Community High School Awards Evening, held in the Ashcroft, a great tribute to the hard work of both the students and staff.

We are both looking forward to representing Whitworth at upcoming civic events in both Saddleworth and Hebden Royd and are well underway with arrangements for my own fundraising event in October to raise funds for the Mayor's Charity – keep your eyes open for more details coming soon.

With Best Wishes,

Councillor Mike Royds, Mayor of Whitworth



Cllr Mike Royds, Mayor of Whitworth with Mayoress Mrs Glen Royds and representatives from WAMDS



DEFIBRILLATOR AT HEALEY DELI

As readers may be aware, in March Healey Deli set themselves a challenge to raised £1400 to buy a defibrillator.

They would like to thank all the local people and businesses that have made donations and supported their fundraising efforts. The defibrillator is now proudly on the wall at the side of the Deli. Special thanks go to the family of the late Robert Pews, who contributed a considerable amount of money toward the defibrillator in his memory. The defibrillator was installed in June and is now registered. It is available to use at any time, 24 hours a day. In an emergency users will be directed by the emergency services on how to access it.



Andy and Nicky (and the Healey Deli Team) would like to thank the community for all their help and support received with this.

Healey Deli received support from Community Defibs for Rossendale. If anyone else would like information on how to increase the availability of this life saving equipment, please contact Dawn Taylor on 07812 303 856 or email dawntaylor_6@hotmail.com

COMMUNITY GALLERIES

Because of the situation with the Leisure Centre, it's impossible at the time of going to press to tell you about any exhibitions there, but they will continue to be mounted at the Library. It's not quite possible to be exact about dates (because of knock-on effects from the baths), but there are plans for exhibitions in the autumn featuring Bacup Camera Club, Whitworth U3A, the Rush Cart, progress with building and demolition at the High School. Why not pop into the Library and take pot luck?

Another eight local organisations (and one individual artist) are currently booked to follow on next spring and summer.

If you're not, and you'd like to be, Jo Furtado welcomes tentative negotiations on 07813 180 748. It's important that we celebrate the positive stuff that happens in the valley.

**YOU CAN NOW USE YOUR MOBILE PHONE TO REPORT
HIGHWAY FAULTS TO LANCASHIRE COUNTY COUNCIL.**

**DOWNLOAD THE "LOVE CLEAN STREETS"
MOBILE APP TO REPORT
POTHOLE,
STREETLIGHTS,
BLOCKED DRAINS
AND MORE**



WHITWORTH MEN'S SHED

Now in its fifth year of operation, the Whitworth Men's Shed is currently restructuring. It hopes to be in a position to offer the men of Whitworth and district an opportunity to join a group centred around shared needs and objectives in a non judgemental and relaxed environment.



The Shed has a well equipped workshop which makes and sells wood based products along with offering to its members craft, music and IT sessions. For those who just need company and a chat over a cup of tea or coffee, there are "drop-in social" sessions on Wednesday and Friday mornings. Over the course of the year, the Shed arranges visits to nearby museums and other places of interest and hopes, in the near future, to invite guest speakers and demonstrators to come along and talk to the group.

If you, a friend or relative, feel membership of this group would be beneficial to your or their general health and wellbeing, come along and meet the team.

For further details visit the Whitworth Men's Shed on any Wednesday or Friday morning between 10.00am and 12.00pm at 6 Milner Street, Whitworth OL12 8RQ or visit whitworthmenssheds.org.uk

WHITWORTH & DISTRICT U3A


Membership of the u3a is made up of retired and semi-retired people from the Whitworth area who wish to continue learning, make new friends and have fun. Monthly meetings are held at Hallfold United Reformed Church Hall Whitworth, on the first Wednesday of the month from 1.15pm for refreshments and notices followed by a monthly speaker.



On Wednesday 6th September will be our Annual General Meeting. On Wednesday 4th October our speaker will be Sarah Slater, Hampton Court guide, who will speak about the Ghosts of Hampton Court. On 1st November Dr Chris Babbs will speak about the History of Medicine.

We have 17 interest groups currently. For insurance purposes only members can join interest groups – details are available on our FB page, website or at the meetings. You can contact the Group Leaders for information on dates, times and venues for group activities. Lynne, our Groups Coordinator can be contacted on 07718913131

New members are welcome for an annual membership of £15 and £2 monthly meeting subs. Anyone interested may attend two meetings before joining. A full list of speakers, interest groups and contact details can be found on the FB page and website u3asites.org.uk/whitworth.



Phil Jones Plumbing and Heating

**DOMESTIC AND COMMERCIAL
PLUMBING AND HEATING
REPAIRS AND
INSTALLATIONS INC LPG**

For more information please call me on
07976 886926
or email me on pjplumbingandheating@yahoo.com

The Window And Door Outlet **NEW YEAR NEW LOOK**

Great Products... Great Prices...




**10 YEARS
GUARANTEE &
INSURANCE
BACKED FOR
PIECE OF MIND**

**YOUR LOCAL U.P.V.C.
& ALUMINIUM
SPECIALIST**

Bi-Folding Doors | Sliding Doors
Conservatories | Composite Doors
Windows | Glass Balustrades | Porches

The Window & Door Outlet
Unit 8, Daniel Street,
Whitworth, Rossendale, OL12 8BX

sales@twado.co.uk
www.twado.co.uk

**0%
FINANCE
OPTIONAL
FREE
CONSULTATION**

01706 436444 FOLLOW US ON 



THE CARPET & FLOORING DEPOT

SPECIALISTS IN

DOMESTIC AND

DESIGNER FLOORS

CARPETS

VINYLS

LAMINATES

LVT

Hundreds of Rolls and Roll Ends in Stock

- *Free Local Delivery*
- *Free planning and measuring service*
- *Professional Fitting Service*
- *Stockists of all leading manufacturers*
- *Family business with over 100 years experience in the carpet trade*
- *Discounted prices—we will match any like for like written quote*



**10% DISCOUNT TO ALL
WHITWORTH RESIDENTS**
*EXCLUDES FITTING CHARGE

FAMILY BUSINESS, FAMILY VALUES

01706 656 466

48 WHITEHALL ST,
ROCHDALE
OL12 8LN

WHITWORTH COMMUNITY CHOIR

Whitworth Community Choir have taken a huge step this year and entered Lancashire Choir Of The Year!

Being recorded in both sound and vision was a first for many of the members. It was a fantastic experience, and the choir would like to publicly thank Martin Duffy and Pete Troughton for their support, enthusiasm and recording. Jones the cameraman completed the team enabling an entry to be put forward.



The choir had an incredible evening. They enjoyed participating in a new experience and are excited to hear if they will make the finals in November.

They are always looking for new members, no experience is needed, just a love of music in all genres.

They rehearse every Tuesday at Shawforth Chapel from 7pm (they are a community choir and not a church choir). If you want any more info or a chat about it contact Gill Pearson on 07779 713595 or email whitworthcommunitychoir@gmail.com

SKYLINE FOR WVN AUG 2023

Skyline 8 took place back in May, and this little piece is intended principally as a thank you to the 60 volunteers without whose time and goodwill it wouldn't have been the real community success that it was.

549 walked, the vast majority completing the full 14 miles. For every 5 men and boys who walked, there were 7 women and girls.

Skyline 9 will probably take place on the equivalent Sunday in 2024 (May 12), clockwise. If you are interested in volunteering to help, please contact Jo Furtado on 07813180748.



Is your child starting school in September 2024?

**Tonacliffe Primary School Open Days:
20th and 27th September 2023
9:30am and 1:45pm**

Book a tour to see the school in action

Please telephone our school office on 01706 344 609

WHITWORTH VALE AND HEALEY BRASS BAND

Thank you to everyone who supported our recent concert at Hallfold United Reform Church and aided the fundraising by contributing towards a very successful raffle.



Band performances and dates for your diary include:

- Sunday 3rd September - Whitworth Rushcart
- Sunday 17th September - the band play at the second section National Finals in Cheltenham.
- Saturday 30th September - the band will perform an entertainment programme for the Bolsover contest.
- Sunday 1st October - a local concert in support of our Academy and Youth bands at the Ashcroft in Whitworth.
- Sunday 12th November - Remembrance Sunday and as usual the band will be involved in the parade, which will be followed by a concert at the band club.

The band has recently finished a term's tuition at St. Bartholomew's CE Primary school. Next term they will be at St. Anselm's RC Primary school to provide tuition for children wanting to learn a brass instrument.

For further information regarding the bands or bookings please ring Michael Whitby on 852613 or call into the band club between 6 - 8.30pm on a Wednesday (Youth band night)

Please look out for further details on local social media.

WHITWORTH IN BLOOM ON COWM PARK WAY NORTH

When the volunteers decided to enter the North West in Bloom competition in 2021, one volunteer in particular decided it would be a lovely idea to introduce a more natural and wilder site into the areas that the judges would visit.

This resulted in a 50-metre stretch of banking on Cowm Park Way North, after the stables, being planted up with wildlife friendly flora such as brambles, foxgloves, meadowsweet, lavender, thyme and even a Rowan tree. Wildflowers were also thrown into the equation creating a colourful show. Insects and wildlife were not only invited to feast here but also stay a while as a Beasties BnB was created using recycled and donated items such as roof slates and plant pots.



There is evidence that there have been plenty of varied guests making themselves at home there! As demand was high, two bee houses were added to the hotel chain. The area is complemented by a sign donated by Andy's Laser Etchings.

The 115 breeze blocks next to this area have also been planted with a variety of bee-friendly flowers. The volunteers proudly feel this area was highly influential in the judges giving the group a Silver Gilt Award and can't think of a much better win-win horticultural situation.

WHAT'S COMING UP AT THE ASHCROFT

Visit The Ashcroft - Whitworth this Autumn and Winter for some amazing seasonal events including Halloween and Christmas parties and some spooky Movie nights for all to enjoy!

The Ashcroft is the heart of the community and takes pride in hosting fantastic 'fun for all the family' events throughout the year. Their Movie nights have been a huge success due to their new 6-meter screen, creating the perfect cinema experience.



Upcoming Movie nights include The Adams Family 2 on Thursday the 26th October - Sequel to the 2019 animation. This family friendly, Halloween classic is one not to be missed!

And SMILE (18+) on Friday the 27th October is for those Halloween horror film thrill seekers.

The Ashcroft's Halloween Party is sure to be a treat on Sunday the 29th October.

And celebrate Christmas at The Ashcroft at their Christmas Party Night on Saturday the 16th December, with live music from the incredible Lareena Mitchell and a 3-course meal with every ticket.

To book tickets for events at The Ashcroft please visit www.the-ashcroft.co.uk

Follow The Ashcroft on social media

Facebook @ The Ashcroft

Instagram @theashcroft

Email team@the-ashcroft.co.uk

Phone 01706 854130

WHITWORTH VALLEY NEWS DELIVERERS WANTED

We're always on the lookout for good people who don't mind giving up an hour and a half of their time four times a year to deliver a box of Valley News magazines to households in Whitworth.

There's no payment, but the Council does pay a small amount every quarter to Whitworth Sports Council, which helps to fund Skyline and the June Fell Races and WSC's other activities.

If you're interested, please contact Jo Furtado on 07813 180 748, or pop into the Council Office and speak to Rachel Hodson.

SHOP LOCAL – ADVERTISE LOCAL

To advertise in the Whitworth Valley News, please contact the Town Clerk on 01706 852018 or email info@whitworth.gov.uk.

For just £38.40 per quarter page in 3,900 copies, the Whitworth Valley News is delivered to every property in Whitworth.

HALLOWEEN Movies

THE ADAM FAMILY 2
26TH OCT 10AM

SMILE (+18)
27TH OCT 7PM



£3
TICKET



FAMILY HALLOWEEN PARTY

SUNDAY 29TH OCTOBER

GAMES
FANCY DRESS
COMPETITION
DISCO

ADULT £2 & KIDS £6

Christmas Party

SAT 16TH DECEMBER
7PM-LATE

£36.95PP

Live music from
Lareena Mitchell

3 course meal






Having a party or a get-together?

We have a wide range of menus available
(including our famous potato pie!)
for collection, delivery or with service

Official caterer on the East Lancs steam
train, Bury: 'Dining with Distinction'



Call us now for a quote!

01706 853251

www.lordscaterers.co.uk

2 Spring Bank, Mills Street, Whitworth, OL12 8QP
(directly behind former premises)



A. J. Nuttall Ltd., Pharmacy

Mr A.J. Nuttall BSc (Hons), MRPharmS



- Confidential computerised records
- Repeat prescriptions
- Ostomy and Surgical Products
- Sports Injuries

So the next time you're unwell...
ask your pharmacist!
You'll be taking good advice.

Tel: 01706 853284

603 Market Street, Whitworth (opp Medical Centre)

Mon - Fri 8.30am - 6.30pm (closed for lunch 12.30 - 1.30pm)

HALLFOLD UNITED REFORMED CHURCH

At 2.00pm on the afternoon of Sunday, 5th November 2023, Hallfold UR Church will host an Afternoon of Music & Song with music by the Whitworth U3A Ukulele Group strongly supported by the Heywood Ukulele Group.

A further musical contribution will be made by songs performed by "Josie" to guitar accompaniment. Other guest musicians will also take part making the afternoon an event to suit many varying musical tastes.

Entry to this event is free of charge and, for a small donation, light refreshments will be available. If you enjoy listening to music come along and join us, you will be in a relaxed atmosphere and amongst friends.

Booking is not required, just turn up on the day to Hallfold UR Church, Hall Street, Whitworth.



WHITWORTH MUSEUM

In addition to the usual Saturday opening, the museum will be open on Sunday, 3rd September 2023 from 11.00am until 4.00pm for the start of the annual Rush Cart procession and, in addition, will recognise the nationally organised Heritage Open Days (HOD) which this year will take place between 8th and 17th September 2023.

In recognition of Heritage Week, the museum will be open on Sunday, 10th September from 11.00am until 4.00pm with the main theme being Whitworth's unique story of the famous Whitworth Doctors and their impact on early medical techniques.

Throughout Heritage Week, there are expected to be many more heritage attractions open throughout the Rossendale Valley. The details will be available on specially printed leaflets available at the Museum and Whitworth Library.

Later in the year will be a repeat of the successful Whitworth Museum Autumn Open Day when on Saturday, 11th November 2023 there will be servings of Lancashire specialities such as Black Peas and Parkin along with other traditional refreshments.

Please do come along and support your local museum and ensure the long-term preservation of the history of the Whitworth Valley.

Whitworth Museum is open each Saturday from 11.00am until 4.00pm throughout the year.



One of the potion pots used by the Whitworth Doctors

CANCER RESEARCH UK – WHITWORTH LOCAL COMMITTEE

The committee would again like to thank all supporters for their continued support.

The songs of praise at Christ Church Healey in May raised £450, thanks to John Keate for arranging this and all those who took part. The fund-raising meal at Il Pepe Nero at the end of May was again a huge success and raised £725. Many thanks to Anna and David and staff for their generosity and support.

The golf tournament in June at Lobden raised £1,110, again thanks to all who supported. At the presentation, a plaque was handed over to the club from Cancer Research in recognition of their longstanding and continued support by members. A further tournament will take place at Lobden on Sunday 17th September. The following week, Sunday 24th, Lobden is again the venue for a Ladies afternoon tea. Admission is by ticket only. Tickets are priced at £15, and it starts at 2.30pm.

Although this seems early, the Annual Christmas Carol Concert with Whitworth Vale and Healey Band will take place at the Ashcroft on Sunday 10th Dec at 3pm. Tickets will be available from the beginning of November, priced at £8.

There will be at least 2 further fund-raising meals before the end of the year, please contact on the numbers below for further information.

If you would like any information, to join the committee, to attend any events or to organise an event yourself to raise funds, please contact Michael Whitby on 852613, Elaine Bagshaw on 853935 or Arnold Ashworth on 343424.

WHITWORTH VALE AND HEALEY BAND CLUB

More good news on the CAMRA front; the club has been voted “Club of the Year” for The Lancashire Area, which reflects both on the quality and variety of beer served, and on the club’s community involvement.

The Club are looking forward to welcoming you to enjoy Rushbearing on Sunday 3rd September. We expect our usual “Folksy” visitors and impromptu music makers.

Congratulations to members of the club for raising money for The Christie with their Bike Ride on 9th July to Blackpool.



The club will again be showing Sky and BT football matches on TV in the club, accompanied by their usual stock of Beers, Lagers and Coffees.

Quizzes continue every other Sunday evening which are free to enter. They also have Darts, Crib and Dominoes teams playing in the Rochdale League every week.

The clubs Twitter, Facebook, and webpages provide updates on events and current beers on tap, including any one-off changes to opening times for live sports on TV, both SKY and BT being available. Remember the club generally opens at 7pm, but this changes to 5pm on Fridays, 3pm on Saturdays and 1pm on Sundays.

ROSSENDALE METHODIST CHURCH IN SHAWFORTH

SUNDAYS	10.30am	Sunday Service (stay for a brew afterwards). All welcome
MONDAYS	9.30am - 11.15am	Toddlers
TUESDAYS	7pm - 9pm	Whitworth Community Choir rehearsal
THURSDAYS	8pm - 10pm	Model Flying Club last Thursday in the month
FRIDAYS	10.30am - 12pm	Community Drop In - tea/coffee/toast (& bacon butties) and a natter. All welcome

Superintendent Minister Revd. David J Burrow - Tel 01706 602882

Autumn Fair Sat 23rd Sep, Christmas Fair 25th Nov

**For room hire (children's parties, meetings etc. wi-fi available)
contact 01706 852815 or 07799 304 405**



TODDLERS

Mondays 9.30-11.15am

Toys, crafts, music
All welcome at
Shawforth Chapel

**Toasted items,
drinks plus fruit &
brews for adults**

STRUGGLING TO KEEP YOUR HOUSE WARM?

Funding may be available for Rossendale residents through the Affordable Warmth Fund for servicing, repairs and replacement boilers and heating systems and associated works, including controls and replacement of unsafe heating appliances.

Households will be eligible for funding if they meet at least one of the following vulnerabilities and have a low income, defined as follows - people with a diagnosed cardiovascular condition, or a diagnosed respiratory condition (in particular, chronic obstructive pulmonary disease and childhood asthma) or diagnosed mental health conditions or disabilities.

Or if they are older people (65 and older), or households with young children (up to the age of 5), or pregnant women, or people who are terminally ill, or people with suppressed immune systems (e.g. from cancer treatment or HIV) or people who have attended hospital due to a fall.

Low income can be confirmed in one of the following three ways - someone being in receipt of means tested benefits or have a total household income not in excess of £31,000 or there is a 'declaration' by the Local Authority or health / social care professional that affordability issues are present.

This fund is being managed on behalf of Rossendale Borough Council by the Homewise Society. For more information and support contact the Homewise Society at **info@homewisesociety.org.uk**

AERIALS & SATELLITE T.V.

Supplied & Fitted

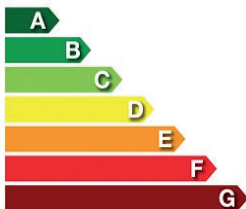
Extra Points - Service Calls

**Call Neil on
07970 677 017**

FREE ESTIMATES



ENERGY EFFICIENCY



Does your business want to save £££ this year?

We now broker Gas, Electric, Water, phone and Data Supplies.

This is a **FREE** service no matter how big or small your business is

Call now

07581587990

ROSSENDALE LAW SOLICITORS

501 Market Street, Wetherby, West Yorkshire LS12 9DN
Tel: 01709 854167 - www.rossendalelaw.co.uk



If you have any legal queries, please do not hesitate to call us on 01706 854167. We are aiming to do most appointments by telephone or video conference in order to minimise the risks relating to Covid.

We have received a high number of enquiries regarding Power Of Attorneys recently. Our fees are £225 plus VAT and the registration fee of £81. Please note that we can only undertake such applications for clients who have mental capacity. Once the capacity has gone, we are unable to do such applications and a Court of Protection application is necessary instead which is significantly more expensive.



ROSSENDALE LAW
SOLICITORS

High Power Pressure Washing

Path pavings cleaned
Patio cleaning
Driveways & Tarmac
Decking & Cobbles
Graffiti removal
Garden stone walls
Moss & algae removal

**Eco-friendly chemicals used
in all cleaning procedures**



**Contact Sean on
07773 798078**

CITIZEN'S ADVICE

Citizen's Advice now have a direct line for anyone living in the Rossendale who needs emergency support with their fuel supply, a referral for a food parcel or information regarding emergency food provision. The telephone number for the Food and Fuel Line is: 01706 941877

The line will be a voicemail service with messages picked up at regular intervals throughout the day. This is a self-referral line and clients can phone themselves if they are able.

CHAIR BASED YOGA RETURNS TO WHITWORTH LIBRARY

This seven-week FREE course is back by popular demand each Friday from 3rd November, 1:30 – 3:30pm, until 15th December.

It's designed for anyone wishing to understand yoga, and who choose a seated version instead of regular yoga practice. During the course participants will experience the poses and gain an understanding of yoga and its benefits.

The sessions are delivered by Lancashire Adult Learning, FREE to all adults over 19, booking is essential. To book, email whitworth.library@lancashire.gov.uk, call 0300 123 6703 and ask for Whitworth Library, or call in at the library.



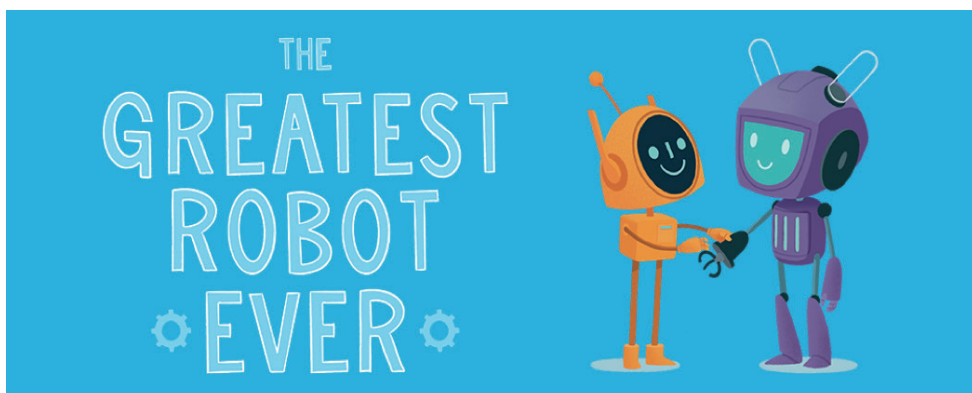
THE GREATEST ROBOT EVER CHILDREN'S DANCE AND THEATRE SHOW WHITWORTH LIBRARY - SAT 28TH OCT. AT 2:30PM

Don't miss this interactive dance theatre show, perfect for children 3-10 years and their grown-ups.

Glitch the little Robot doesn't feel special like all the other amazing robots living in the junkyard. With the help of their best friend Shift they go on a quest to find the pieces to make them stand out!

Children interact with the performers throughout the show and take part in an engaging workshop exploring resilience, friendship and wellbeing.

Tickets £5 per person, on sale at the library, see above for details.



CROSSWORDS – CRYPTIC OR STANDARD! WITH THE SAME ANSWERS! YES – AGAIN!

CRYPTIC CLUES

Some anagrams, some partial anagrams, some build-a-words, one hidden answer (4 down, if you want an easy start) and some wordplay. Have fun!

ACROSS

- 1 New note changes stupid to nippy (4)
- 3 Self-satisfied note – right – around foreign article for dodgy trader (8)
- 8 Scottish candle-string (4)
- 9 What the rock stars of Five might look back on and puzzle over – epic Noel? (8)
- 11 Drag – one part of the equation for what attracts? (4,6)
- 14 Heavy coat loses lustre (6)
- 15 As an alternative I dive into the air (6)
- 17 Old boy! In Paris I court a goddess, north and south!
And you have problems with that?! (10)
- 20 A bulking agent creates cosmic boulder (8)
- 21 Just pay it lad! (4)
- 22 Sounds like young female leader is mucking around (8)
- 23 Senior impressionist turns round, missing son (4)

DOWN

- 1 Own proud recipe for cats and dogs (8)
- 2 What anonymous tail-end rabbit wants to do (8)
- 4 Spite amongst the formal ice-dancers (6)
- 5 Confidence shot – look! American grunts? Poet? Rock stars? (10)
- 6 Audible problem for a boat – capsize the stabiliser (4)
- 7 Regretted sounding blue (4)
- 10 Bare thrift turns into gynaecological issue (10)
- 12 Selecting footwear to music? (8)
- 13 Fought. Suffered red welts (8)
- 16 Out west, I swerve round what students are supposed to do (6)
- 18 MacDonald’s loud limb? (4)
- 19 Looks like a Victorian ode being declaimed on the dock of the bay (4)
- 17 Reverse artificial intelligence to change cow-juice into reminder system? (5)
- 18 Reverse act – sundown hides it (4)

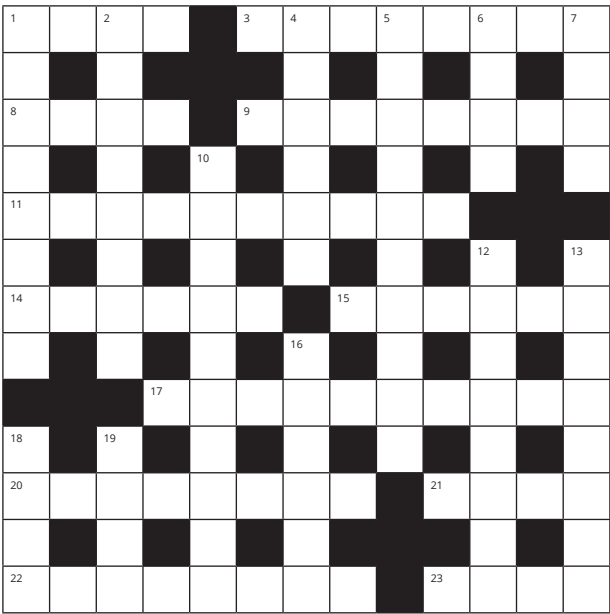
REGULAR CLUES

ACROSS

- 1 Neatly skilful (4)
- 3 Dealer in contraband (8)
- 8 Town in north of Scotland (4)
- 9 Geological era (8)
- 11 What draws in customers (4,6)
- 14 Irish province (6)
- 15 Good pal of “or” (6)
- 17 What lawyers may raise, esp. in US courts (10)
- 20 Small planetary body (8)
- 21 William the Short? (4)
- 22 Naughtiness (8)
- 23 Polite (?) word for “old” (4)

DOWN

- 1 Heavy rain (8)
- 2 Anonymous (8)
- 4 Nastiness (6)
- 5 Earth scientists (10)
- 6 Symbol of Cymru (4)
- 7 Regretted (4)
- 10 Post-natal expulsion (10)
- 12 Taking your pick (8)
- 13 Grappled (8)
- 16 Change (or mug up) (6)
- 18 Cultivate (4)
- 19 Lift manufacturer (or singer) (4)
- 18 Reverse an action (4)



WHITWORTH'S REMEMBRANCE SUNDAY

On Sunday 12th November, Whitworth residents will gather to remember those lost and injured during times of conflict. The town's Remembrance Sunday commemorations will begin with the procession which sets off from the former Town Council Offices (near the corner of Market Street and Tong Lane) at 10.20am.

The procession route will be subject to a road closure for this short period of time and drivers are advised to avoid the area. The procession will arrive at Whitworth Memorial Gardens in Facit at approximately 10.40am and will be followed by a service of Remembrance around the Cenotaph, including a two-minute silence at 11am.



Following the Service of Remembrance, everyone is invited to join the Mayor for light, warm refreshments at The Ashcroft. This event can only continue with the help of volunteer marshals to assist with the road closure.

If you know of any adults willing to help marshal the please contact David Chorlton on cllrdauidchorlton@whitworth.gov.uk or 07939 218 266.

Joshua Law
Traditional Family



Butchers...

- Cooked Meats (prepared & cooked on the premises)
- Bury Black Pudding
- Quality Steaks (matured for at least 21 days)
- Finest Sausages
- Finest English Spring Lamb
- Poultry, Bacon and Game
- Home Made Ready Meals (changed weekly)
- New Special Offers Every Week

...& Bakers

Freshly baked bread, pies and sandwich orders!

TELEPHONE ORDERS WELCOME
FREE HOME DELIVERY

Opening Hours:

Mon-Fri: 7.30am-5.30pm

Sat: 7.30am-1.30pm

Tel:

01706 852313

739 Market St., Facit, Whitworth, OL12 8LD

**WHITWORTH
DOUBLE GLAZING
REPAIRS**

**ALL FOGGED UP?
DRAFTS?**

**LOCKS & HANDLES
HINGES**

**ANY DOUBLE GLAZING
PROBLEM SOLVED
NO VAT
30 YEARS EXPERIENCE
JUST CONTACT RICHARD
07768 243081**



Plumbing & Heating Services

Professional, Reliable, Affordable

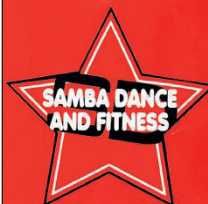
- For all heating systems
- Installation
- Service
- Repairs



Mobile: 07515 100 161

Tel: 01706 653 581

Email: brad@bowerheatingservices.co.uk



613 Market Street,
Whitworth, OL12 8DY

☎ 01706 854960

www.sambadanceandfitness.co.uk

- **Private Lessons**
- **Competitions & Exams**
- **or Just for Fun**

Also a Range of Fitness Classes for all ages



HELLO NEW YARIS CROSS HYBRID COMPACT SUV

**NOW AVAILABLE TO TEST
DRIVE AT RRG ROCHDALE**

RRG Rochdale Toyota

Edinburgh Way, Rochdale, OL11 2PD

Tel: 01706 863 253

rrgrochdale.toyota.co.uk



/RRGRochdaleToyota



@ToyotaRochdale



Model shown is MY23 Yaris Cross Design 1.5 VVT-i Auto PWD £26,655 including optional Metallic paint at £615. Prices correct at time of being published. Terms and conditions apply. Official fuel consumption figures in mpg (l/100km): combined 54.6 (5.2) - 62.8 (4.5). Combined CO2 117-102 g/km. Hybrid electric vehicle. Figures obtained using a combination of battery power and fuel. Figures are provided for comparability purposes; only compare fuel consumption, CO2 and/or equivalent all-electric range figures with other cars tested to the same technical procedures. These figures may not reflect real life driving results. Fuel consumption, CO2 produced, and equivalent all-electric range can vary significantly depending on a number of factors including the accessories fitted (post-registration), driving style, conditions, speed and vehicle load. All models and grades are certified according to the World Harmonised Light Vehicle Test Procedure (WLTP). All mpg and CO2 figures quoted are full WLTP figures. More information can be found by visiting: www.vehicle-certification-agency.gov.uk/fcb/wltp.asp.

WHITWORTH'S TOURISM AND LEISURE COMMITTEE'S ANNUAL WREATH MAKING WORKSHOP

Whitworth Town Council's Tourism and Leisure Committee have been getting in the Christmas spirit planning the Christmas Celebrations. Following the success of previous year's workshops, the volunteers have decided to do it all again this year! The idea was the brainchild of volunteer member, Linda Parker to recycle the Christmas tree offcuts the group produce.

The workshop takes place on Saturday 2nd December at Hallfold Church Hall from 1pm until 4pm. Everything will be provided to make a traditional, natural wreath. Guests will receive mulled wine and a mince pie and be entertained by Christmas tunes while they craft. Everyone is welcome to bring along decorations they wish to add to their wreath to customise theirs to their own colour scheme.

Tickets are available NOW while stocks last priced at £30 per head, available from the Whitworth Council Office at the Ashcroft, the Town Clerk on 01706 852 018 and online from www.whitworth.gov.uk/events/Wreath_Making_Workshop



THIS IS FLY TIPPING





**Whitworth
Town Council**

Report at
https://www.rossendale.gov.uk/forms/form/10329/en/report_fly-tipping



Traditional Wreath Making Workshop

Saturday 2nd December
 1pm to 4pm
 at Hallfold Church Hall
 tickets from Whitworth Council Office or
www.whitworth.gov.uk/events/Wreath_Making_Workshop

**£30
per head**

mulled wine & mince pie included

Feel free to bring decorations which match your colour scheme

WHITWORTH
TOURISM & LEISURE COMMITTEE

WHITWORTH RUSHCART PROCESSION

Whitworth Rushcart will take place on Sunday 3rd September. The procession leaves Whitworth Museum (North Street) at 1pm featuring traditional morris dance troupes and will travel up the main road, led by the Rushcart itself towards The Ashcroft.

From 1.15pm until 4.30pm, the car park of The Ashcroft will be cordoned off for stalls, entertainments, and performances from various morris dancing troupes and members of the Whitworth Vale and Healey Band. The Ashcroft bar will be open for liquid refreshments and there will be a variety of food available. There will also be an arts and crafts fair in The Ashcroft main hall.

The Whitworth Rushcart is one of only four such celebrations which still take place in the United Kingdom. Whitworth's cart is unique in that it is the only one to be covered in beautiful heather that is in bloom at this time of year, collected by the Whitworth Rushcart Men from the moors above Darwen before the event. Rushcarts in other areas are covered in rushes or tatters of cloth.

For the procession to go ahead smoothly, we need the help of 22 volunteer marshals to assist the road traffic management company by directing traffic away from side streets. You don't miss a thing; in fact, you get to watch the procession from pride of place.

If you can spare an hour to help marshal, please contact David Chorlton on 07939 218 266 or email clrdavidchorlton@whitworth.gov.uk



MITCHELL'S MOTOR SERVICES HALFWAY GARAGE

MOT preparation, presentation & repair
Pick up delivery service available
(by appointment)

Diagnostics, supported by the latest
'Snap On' software
Servicing / Repairs



cars, vans, 4x4's
all makes, all models
no job too large or small

01706 854300 • 07977 458646
721 Market Street, Facit, Whitworth, OL12 8LD

HOUSEWORX



Washing and ironing

Dry cleaning

Alterations and repairs

COLLECTION AND DELIVERY AVAILABLE

01706 854379

Commercial and
domestic cleaning

07908 242 294

539 Market Street, Whitworth
OL12 8QW

2023 WHITWORTH RUSHCART

Sun 3 Sept

MARSHALS NEEDED:

Can you spare an hour on Sunday
3rd September? We need adults to
man closed side streets during the
procession. You will get to watch
the procession go by whilst
marshaling.

Contact David for more details
cllrdauidchorlton@whitworth.gov.uk
or phone 07939 218 266

MORE INFO: 01706 852018 WWW.WHITWORTH.GOV.UK



JJS ELECTRICAL CONTRACTORS

RESIDENTIAL & COMMERCIAL & INDUSTRIAL

All works undertaken fully guaranteed !
Full installation & testing of EV charge points.

Contact us on 01706 872 728 or email
mail@jjsselectricalcontractors.co.uk to get a
free no obligation quote

www.jjsselectricalcontractors.co.uk





**VILLAGE CARS
and
WHITWORTH TAXIS**



01706 854545
01706 854343
07592 953822



**RT
FENCING**

**Rear of 307a Market Street, Whitworth
Rochdale, Lancashire, OL12 8PW**
You will find us opposite Basils Restaurant

Telephone **01706 650829 or 07966846638**
Email **sales@rtfencing.co.uk**
Visit our web shop **www.rtfencing.co.uk**

We offer fencing installation service, with all panels manufactured in house. We supply timber products, fence panels, concrete products, decking and gates to domestic and trade customers at very competitive prices.



 **Home
Instead**
To us, it's personal

**Live well,
your way**

Start your home care journey with
Home Instead® today.

- ♥ Home Help
- Personal Care
- Live-in Care
- Companionship
- ◆ Dementia Care

01706 249100
rochdale@homeinstead.co.uk

Each Home Instead franchise is independently owned and operated. Copyright © Home Instead® 2021.

WHITWORTH'S CORONATION CELEBRATIONS

Whitworth, you definitely know how to celebrate! Thanks to everyone for sending in their street party photographs, it was hard to decide which ones to include. It was lovely to see so many people celebrating King Charles III's Coronation.

Thanks to everyone who attended the family day at The Ashcroft, and a special thanks to all the volunteers who helped to make the day such a fantastic success. It was marvellous to see so many families attending the free event and a great day was had by all.

Thanks to the amazing performers for giving outstanding performances and to all those making sure the sound quality was second to none.



CHRISTMAS TREES ON BRACKETS

Whitworth's Tourism and Leisure Committee are aiming to continue to extend the Christmas lights offer across the length of the town by installing Christmas trees to properties around Whitworth. To spread the festive cheer throughout the town, the Committee are hoping that residents might consider displaying a Christmas tree on their property.

The Committee can offer a 3ft to 4ft real Christmas tree plus a set of mains-powered or battery festive lights, including installation and removal. As you may be aware, battery powered lights may not be as bright as the mains powered options and can have a limited life span as the batteries can be affected by cold weather. Should there be an issue we will endeavour to replace them when our volunteers are available.

We anticipate the cost will be £50 per tree or £42 each for two or more. The trees will be installed in the last two weeks of November and will be taken away at the end of the festive season. The contractor will need to arrange access for the mains cable to be fed into the house for installation.

To order your tree, please complete the order slip below or order online at www.whitworth.gov.uk/events/Tree

The last order for trees is Sunday 15th October so order now, while stocks last!



I would like to order bracket(s) for a cost of £25 per bracket.

I would like to order tree(s) for a cost of £50 per tree (£42 each for more than one tree per property).

I am the building owner and I give permission for the bracket and tree to be installed.

I agree that following installation I am responsible for the maintenance and safe upkeep of my bracket and tree.

Name:

Address:

Telephone:

Email:

Signature (can be electronic or typed):

SANTA IS COMING BACK TO TOWN

Once again, we have arranged for Father Christmas to take some time out from his very busy schedule to visit Whitworth in December. He will be sledding through the town in his custom-built 4-wheel drive sleigh on Saturday the 16th and Sunday the 17th of December, between 6 and 8pm.

His route will be between Healey and Britannia and will be calling at most of the residential areas on the way driving slowly to allow families to wave as he passes by. It would be impossible to cover every single street, but the volunteers have worked hard to ensure that you won't have far to go to see him drive by.

Residents are encouraged to come out and meet Father Christmas as he makes short stops at allocated points to allow children to collect some sweets as a Christmas treat. The sleigh will be stop at local businesses, including the Halfway House and The Oxford as well as Cowm reservoir where the Whitworth Waterski centre will be decked out in Christmas Lights. Check out the next issue of the Whitworth Valley News for the route and schedule.



WHITWORTH UNIFORMS

A community project was set up in July with a couple of aims – to help families who were struggling to afford new school uniforms and to prevent good quality clothes going to landfill just because children had outgrown them.

The response to this project has been amazing and the organisers would like to thank all those who kindly donated any items; those who have been collecting the uniforms have been very grateful for them.



The organisers would also like to thank The Ashcroft for allowing them to use space at the venue for storage and as both a donation and collection point. Drop-in days have been held on Tuesdays over the summer holidays when the buying of uniforms is at its peak. The project will continue throughout the rest of the year with donation points at Whitworth Co-op, Library, The Lighthouse and The Ashcroft.

Anyone needing uniforms is requested to message Whitworth Uniforms on Facebook or this can be done via the Town Clerk on 01706 852018 or email info@whitworth.gov.uk.

NORMAN HILL FABRICATIONS



Gates • Railings
Security Grilles • Site Welding

Unit 14, Daniel Street Industrial Estate,
Whitworth
OL12 8BX

Tel: 01706 852184

Mobile: 07980 957351

Email: norman@normanhillfabrications.co.uk

www.normanhillfabrications.co.uk

Call now for a FREE,
no obligation quote!

CROWTHER
optometrists

OUR SERVICE IS AS UNIQUE AS YOUR EYES



For a friendly and professional
service from an Independent
Optometry Practice
established for over 50 years.

LOOK NO FURTHER

33/35 Market Street, Bacup, Lancs., OL13 0AJ

Tel: 01706 874631

Barley View



Specialist Dementia Care Home

Overlooking the Rossendale Valley, our Willow Lane community provides a safe, secure and responsive environment for the effective care of people living with dementia. With relaxing décor, bespoke features and dedicated staff - we have created a community where our residents can feel at home, not in a home.

Our home offers:

- ✓ Purpose-built Dementia care setting
- ✓ 14 en-suite rooms
- ✓ Nurse call sensors
- ✓ Light assisted guidance
- ✓ Dedicated activities co-ordinator
- ✓ Communal areas
- ✓ Outside space & garden
- ✓ Higher staff ratios
- ✓ In-house cooks

01706 659 917

enquiries@whitworthcare.org.uk



(out of 10) carehome.co.uk

whitworth care
independent group service

LIGHTHOUSE COMMUNITY FOODSHARE

At time of writing, The Lighthouse is supporting 104 households which include 301 individuals, 132 of them children up to the age of 16. These numbers are expected to rise over the school holidays. Despite significant donations from shops, the quantity of supplies that The Lighthouse receive is still far short of the amount needed to help all their clients.

Due to this, The Lighthouse is spending around £1,500 of donated funds each month to purchase essentials to supplement their stock. Remember, nobody at the Lighthouse is paid so every penny they receive is put towards providing their service – every part of which has been made possible by someone's generosity. Behind the scenes, the Lighthouse takes a lot of time and effort, but it has brought people together.

Connections have grown with other groups and agencies and friendships have formed between volunteers. Tending the Lighthouse vegetable garden provided by Tonacliffe Primary School has attracted green fingered and gardening newbies alike. The fruits (or vegetables) of their labours have been enjoyed by the Lighthouse clients. A volunteer even found themselves serving a long-lost relative and they continue to keep in touch.

The clients are always what drives the Lighthouse; one single mother recently said *"I see the difference you've made in my children – they are happier. They have proper meals to eat, and they don't worry about asking if there's something left in to eat when they're hungry. You've taken away so much stress I had about how I can feed them. You are wonderful people"*.

Donations can also be made by bank transfer using sort code: 30-98-97, account number: 55373062

Lighthouse opening hours are Tuesday 10am-4pm, Thursday & Saturday 10am-3pm.

For an appointment or to ask about volunteering telephone or text: 07922 951 096





Save the date!

The second Rossendale Dementia Information event will be held on


Friday 22nd September

**11am-6pm at Longholme Methodist Church Hall,
Rawtenstall BB4 7NE**

One stop shop for
people living with dementia, their carers and families.
Information on local services, activities and advice.

www.beaconrossendale.org.uk





Memory Matters

Has someone close to you been having problems with their memory?
We understand that it is a very difficult time for you; many of our clients tell us that they did not know which way to turn.

The Memory Matters project at Homewise can assist you to access various services, helping you to apply for attendance allowance, advising you on the best way forward, and listening to your concerns.

Some comments from our clients:-

'Very efficient and thorough; hugely helpful and pleasant organisation. Made applying for Attendance Allowance easy.'


'The service is amazing; our family feel very supported and are confident in knowing we can ask any questions or ask for advice on anything.'

'It is quite hard to piece services together, but you did it.'

The service is free and confidential and available for people living in Hyndburn, Burnley, Pendle, Rossendale and Ribbles Valley.

Please ring us on 01254 232249, Monday to Friday, 8.30 am to 4.00 pm.

Homewise - your local Home Improvement Agency
Unit 3, Allied House, Burnley Road, Altham
Lancashire. BB5 5TW
Tel: 01254 232249
Fax: 01254 391227
Registered Charity No. 1179077





Friends of Whitworth Library

Whitworth Library, right at the heart of the community, where you'll always get a warm Whitworth welcome. Check out these activities at the library for everyone to enjoy. All are FREE unless stated.

Mondays

- 10:00 – 10:45 **Fitsteps** Upbeat dance exercises with Jan (£4.50)
11:00 – 11:45 **Pilates** Improve your strength, posture and balance with Jan (£7.50)
£10.00 for both above classes. Contact Jan Jenkins Fitness on 07939 087122
14:00 – 16:00 **Knit and Natter** Bring your knitting and enjoy a brew and good conversation

Tuesdays

- 10:00 – 12:30 **Scrabble Club** Great company and good fun – why not join us?
14:00 – 14:30 **Storytime and More!** Stories and themed activities (18 months - 5 years)
14:00 – 15:00 **Little Steps** featuring games, sing-alongs, stories and crafts on last Tuesday of month
15:00 – 17:00 **U3A Wellbeing** 1st Tuesday of month - 07762 757925 (Sheila) for info

Wednesdays

- 10:00 – 11:30 **Rossendale Children and Family Wellbeing Session** for children aged 0-5 yrs
12:00 – 13:30 **Meditation and Wellbeing** Contact Sheila Daly for details (07762 757925)
(suggested £5 donation)
18:00 – 19:00 **Line dancing** Contact Sheila Daly for details (07762 757925)
19:00 – 20:30 **Yoga, Pilates and Relaxation** Contact Sheila Daly for details (07762 757925)
(suggested £6 donation)

Thursdays

- 09:30 – 10:30 **Learn My Way** Get online – start your digital journey today!
10:00 – 11:30 **Shared Reading Group** All welcome!
10:00 – 12:00 **U3A Family History** on last Thursday of month. T. 07790192120 (Jean) for info
13:30 – 15:30 **U3A Art Group** 1st Thursday of month. T. 07800 820096 (Lindsay) for info
14:00 – 15:00 **U3A Creative Writing** 1st Thursday of month. T. 07903 570008 (Kay) for info
14:00 – 15:30 **U3A Flower Arranging** 3rd Thursday of month. T. 07411 520771 (Nina) for info

Fridays

- 10:15 – 11:00 **Baby Bounce and Rhyme** (birth to 3 yrs.)

Saturdays

- 10:30 – 12:30 **Lego Club** (for all ages)
10:30 – 11:30 **Garden Gang** (for children of all ages)

... and newspapers and books, including audio and large print. There's information on a whole host of topics. The library also offers the warm welcome scheme to help with the cost of living. Drop in for a cuppa and a welcome from the friendly library team. You can brush up your digital skills on the public computers, with free Wi-Fi and also print and photocopy too.

If you, a relative, or someone you care for, can't get to the library, the team can bring the library home to you, via the Home Library Service. Get in touch by calling 0300 123 6703 and ask to be put through to Whitworth Library, or email: whitworth.library@lancashire.gov.uk

Follow the library or the Friends of Whitworth Library Group Facebook page, for news about events. You can also contact friendsofwhitworthlibrarygroup@gmail.com to be added to the mailing list.



The Women of Whitworth Project ROSE Awards 2023

**Celebrate the amazing females in our
community and join us on**

**Saturday 30 September
7.30pm - Midnight
Berni Inn, Whitworth**

**£10 ticket admission only
thewowproject2018@gmail.com**

LOCAL TRADES LIST



GILL CHORLTON

Ofsted Registered Childminder

Level 3 qualified, dedicated playroom and garden,
Local Authority funding accepted

Full and part time places,
Tel: 07962 190 667, follow on Facebook

HEALEY DELL HERITAGE CENTRE AND TEAROOMS

Fully Licensed tearoom and free venue hire
Open Thursday to Sunday from 10am to 5pm
Dell Road, Rochdale
Bookings and enquiries 01706 350 459
hello@healeydelheritagecentre.co.uk
www.healeydelltearooms.co.uk

CJ ROTHWELL LANDSCAPING AND DRAINAGE

cjrothwell@hotmail.com
Tel: 07846 107 922
39 Rawstron Street, Whitworth

RLH GAS & PROPERTY SERVICES

Richard Lyon-Hayes - Gas Engineer
Servicing, installation & repairs, kitchen & bathroom
Tel: 07970 470 019 www.rlhgas.co.uk
rlhgasandpropertyservices@yahoo.co.uk
GAS Safe registered 531279
33 Oak Street, Shawforth

SEAN BRADLEY

High power pressure washing paths & patio cleaning driveways
& tarmacking, decking & cobbles, graffiti removal, garden
stone walls, moss & algae removal, plus window cleaning
Tel: 01706 879 928 / 07773 798 078
Seanbrad09@gmail.com
28 Douglas Road, Bacup

ANDREW ROBINSON

Painting and Decorating

Tel: 01706 63979 / 07967 203 484
4 Meadow Head Avenue, Whitworth

PETER RICHARDSON

Painter and Decorator

Tel: 01706 854 729 / 07957 758 928
Over 30 years' experience, no job too small
9 Heatherlands, Whitworth

**List your business for
£5.83 + VAT per edition!**

**01706 852018
info@whitworth.gov.uk**

This community magazine is produced by Whitworth
Town Council. It is distributed to 3,900 properties in
Whitworth four times a year.

Editorial content is carried free of charge; advertising
rates can be provided upon request.

Whitworth Town Council cannot be held responsible for
the accuracy of any information provided for submission
by outside organisations, the quality of service offered by
advertisers, or the content of adverts within the magazine.

PHIL JONES

Plumbing and Heating

LPG (Gas Safe REG)
Tel: 07976 886 926
pjplumbingandheating@yahoo.com
4 The Hedgerows, Whitworth

OPENREACH Window & UPVC Cleaning

Carpet & Upholstery Cleaning Jet Washing
Tel: 0800 617 679
openreach-wcs@tiscali.co.uk
www.openreach-wcs.co.uk
35 Westgate, Whitworth

MILCARE

516 Market Street, Whitworth, OL12 8JT
For all your care support needs and benefits assessments
Tel: 01706 482002 www.milcare.co.uk

ETERNAL CEREMONIES - Tina Hall

Celebrate, creating unique and bespoke ceremonies to
celebrate all those special occasions.
Namings, Weddings and Funerals.
FB page - ETERNAL CEREMONIES
Tel: 07834 924 626
tinaann.hall@yahoo.com

MACLEOD PODIATRY

Bsc (Hons) qualified HCPC registered and
fully insured podiatry service
Available for home visits or clinic appointments
Tel: 07728 723657 macleodpodiatry@hotmail.com
(within the pharmacy AJ Nuttall, 603 Market St, Whitworth)

CHARLIE PRICE GARDENING SERVICES

Covering all area of landscaping - fencing, decking, gates,
turfing, shed bases, paving, pergolas, artificial grass, hedge
cutting and garden maintenance
Tel: 07925 141783 charliedavidprice@gmail.com

CROSSWORD ANSWERS see pg 16 for the puzzle

D	E	F	T		S	M	U	G	G	L	E	R
O		A				A		E		E		U
W	I	C	K			P	L	I	O	C	E	N
N		E		A		I		L		K		D
P	U	L	L	F	A	C	T	O	R			
O	E	T		E		G						W
U	L	S	T	E	R		E	I	T	H	E	R
R		S		R		R		S		O		E
					O	B	J	E	C	T	I	O
F					I		V		S		S	T
A	S	T	E	R	O	I	D			B	I	L
R		I		T		S					N	E
M	I	S	C	H	I	E	F			A	G	E



Lancashire Constabulary

police and communities together

IT IS REALLY IMPORTANT THAT ALL CRIMES ARE REPORTED

**PC SCOTT BENTLEY IS THE DEDICATED POLICE OFFICER FOR WHITWORTH,
YOU CAN CONTACT HIM ON 2973@LANCASHIRE.POLICE.UK**

**ALTERNATIVELY CONTACT COMMUNITY PCSO 7356 HEIDI KIRKBRIGHT
07970 970878 OR 7356@LANCASHIRE.POLICE.UK**

**ADDITIONALLY YOU CAN REPORT A NON-URGENT CRIME OR INCIDENT,
PLEASE DIAL 101 OR VISIT
WWW.LANCASHIRE.POLICE.UK/CONTACT-US/HOW-DO-I-REPORT-A-CRIME**

FOR EMERGENCIES DIAL 999

**SIGN UP TO "IN THE KNOW" TO RECEIVE ALERTS AROUND CRIME PATTERNS IN WHITWORTH
STAYINTHEKNOW.CO.UK/LANCASHIRETALKING**

Lancashire County Council:

0300 123 6701 (general enquiries)
www.lancashire.gov.uk

Initial Response Service

0800 013 0707
For urgent or general mental health issues

Highways 0300 123 6780

Email highways@lancashire.gov.uk
Out of hours social care emergencies
0300 123 6720

Rossendale Borough Council:

01706 217777 (council tax, bin collections
and other services)
0300 222 5944 (revenues and benefits)
0300 22 5946 (out of hours emergencies)
www.rossendale.gov.uk

The Lighthouse Community Foodshare:

551-553 Market Street, Whitworth
Tuesday & Thursday (10am-4pm)
Sat (10am-3pm) by appointment only
lighthousefoodshare@gmail.com
07922 951 096

Together Housing:

0300 555 5556 (general enquiries)

Homestart:

01706 214621
emma@homestartrbh.co.uk
www.home-start.org.uk

Carers Link Lancashire:

01254 387444
info@carereslink.net
www.eastlancscareres.org.uk

Citizens Advice Rossendale:

Financial, welfare and benefits advice
0300 456 2552
www.carh.org.uk

The Samaritans:

01706 830999
(Freephone) 0800 116 123

Universal Credit:

(Freephone) 0800 731 9344

Lancashire Volunteer Partnership:

Befriending service for people who want
someone to talk to
www.lancsvp.org.uk
07779 972114

WHITWORTH TOWN COUNCILLORS

FACIT & SHAWFORTH WARD

Tom Aldred (Labour): 01706 852183 • atomaldred@aol.com

David Chorlton (Independent): 07939 218266 • clldchorlton@gmail.com

Kim Olaolu (Independent): 07434 034784 • clrkimolaolu@gmail.com

Sarah Rhodes (Independent): 07891 269998 • clrsarahrhodes@whitworth.gov.uk

Janet Whitehead (Independent): 07795 577647 • clrjanetwhitehead@whitworth.gov.uk

Louise Burton (Independent): 01706 852018 • info@whitworth.gov.uk

HEALEY & WHITWORTH WARD

Gareth Baron (Independent): 07773 307669 • clrbaron@gmail.com

Robbie Blezard (Community First): 07506 609226 • r.blezard@outlook.com

Alan Neal (Community First): 07817 414721 • alanneal@rossendalebc.gov.uk

Dayne Powell (Community First): 07557 561803 • Dayne.powell@outlook.com

Mike Royds (Community First): 07811 994458 • clrmikeroyds@outlook.com

Michael Whitworth (Community First): 07850 910321 • clrmikewhitworth@gmail.com

WHITWORTH TOWN COUNCIL OFFICES

The Ashcroft, Market Street Whitworth, OL12 8DP

Contact: Rachel Hodson, Town Clerk

Tel: 01706 852018 • Email: info@whitworth.gov.uk • www.whitworth.gov.uk

Office hours: Mon–Fri 9.30am–2pm

FORTHCOMING WHITWORTH TOWN COUNCIL MEETING DATES

All the following Thursdays: 7th September, 21st September,
19th October and 16th November

All meetings are open to the public and
take place at 7.30pm in the Council Chamber.

See the website for details or contact the Town Clerk.

ROSSENDALE BOROUGH COUNCILLORS

FACIT & SHAWFORTH WARD

Scott Smith and Janet Whitehead

HEALEY & WHITWORTH WARD

Dayne Powell and Alan Neal

LANCASHIRE COUNTY COUNCILLOR

Councillor Scott Smith

Scott.Smith2@lancashire.gov.uk

07891 695962

MEMBER OF PARLIAMENT

Jake Berry MP

0207 210 5000 (House of Commons)

01706 215547 (Constituency office)

jake.berry.mp@parliament.uk

www.jakeberry.org