

Whitworth

VALLEY NEWS



PRODUCED BY
Whitworth
Town Council



CHAMPIONS!

FULL STORY ON PAGE 9



NORMAN HILL FABRICATIONS



Gates • Railings
Security Grilles • Site Welding

Unit 14, Daniel Street Industrial Estate,
Whitworth
OL12 8BX

Tel: 01706 852184

Mobile: 07980 957351

Email: norman@normanhillfabrications.co.uk

www.normanhillfabrications.co.uk

Call now for a FREE,
no obligation quote!



613 Market Street,
Whitworth, OL12 8DY

☎ 01706 854960

www.sambadanceandfitness.co.uk

- Private Lessons
- Competitions & Exams
- or Just for Fun

Also a Range of Fitness Classes for all ages



Freestyle / Disco
Street / Hip Hop
Latin American
Ballet & Tap
Ballroom
Cheerleading
Breakdance
Drama

VILLAGE CARS and WHITWORTH TAXIS



01706 854545

01706 854343

07592 953822



Rear of 307a Market Street, Whitworth
Rochdale, Lancashire, OL12 8PW

You will find us opposite Basils Restaurant

Telephone 01706 650829 or 07966846638

Email sales@rtfencing.co.uk

Visit our web shop www.rtfencing.co.uk

We offer fencing installation service, with all panels manufactured in house. We supply timber products, fence panels, concrete products, decking and gates to domestic and trade customers at very competitive prices.

MESSAGE FROM THE MAYOR

Dear Whitworth Residents and Friends,

As your Mayor & Mayoress for this year, my wife and I are enjoying representing our wonderful town. The month of September saw a busy start with the Rushcart celebrations on the Sunday 3rd. The weather was very kind to us, and it was great to see so many people come along and join in the fun. The following week included a visit to Shaw & Crompton Parish Council for their Civic service, and the next week saw us at Hebden Royd Parish Council in West Yorkshire, once again for a Civic service. We received a very warm welcome at both these events.

Sunday 24th, the Mayoress had a solo outing at an event at Lobden Golf Club for Cancer Research. Finally, to mark five Sundays in a row, we both enjoyed a superb concert by Whitworth Vale & Healey Band at the Ashcroft, a tribute to the late Jimmy Grogan. The concert featured a very young Academy Band who really enjoyed the backing of the audience with an excerpt from Queen's "We Will Rock You". Also featured were the Youth band who gave a brilliant performance with their chosen pieces. October arrived and the pace continues with our second invitation of the year from WAMDS for their production of "Once", a very slick performance once again from this fantastic group fully backed up by their front of house staff, lighting, costume and musicians.

Our new Business & Community Awards took place on Saturday 28th October at The Ashcroft, a brilliant evening to recognise the support from business and community groups given to the people of Whitworth. Details of winners etc in the next WVN.

There are many forthcoming Mayoral fundraising events including a curry Night at The Ashoka £20 per person. Please book directly with the Mayor, clrmikeroyds@whitworth.gov.uk or 07811 994 458. We also plan to hold a Civic event on the evening of Saturday 27th April 2024, but we want YOU the people of Whitworth to come along and join us, so what sort of event would you like? Please email in your ideas.

I hope you will come along to the Whitworth Community Carol Service at 7pm on Monday 11th December at The Ashcroft. This is a free event featuring all four Whitworth primary schools and one that I am particularly looking forward to.

With Best Wishes,



Councillor Mike Royds, Mayor of Whitworth



The Mayor and Mayoress of Whitworth opening the new RT Fencing Store with Sir Jake Berry MP and Cllr Scott Smith

SANTA EXPRESS

Following the huge success of previous years, the committee have decided Santa Express will return to the streets of Whitworth again!

Father Christmas will be travelling through Whitworth in his custom-built sleigh between 6pm and 8pm on Saturday 16th and Sunday 17th December. He will be sledding between Broadley and Britannia and calling at most of the residential areas on the way, driving slowly to allow families to wave as he passes by. It would be impossible to cover every single street, but Father Christmas's elves have worked hard to ensure that you won't have far to go to see him drive by.

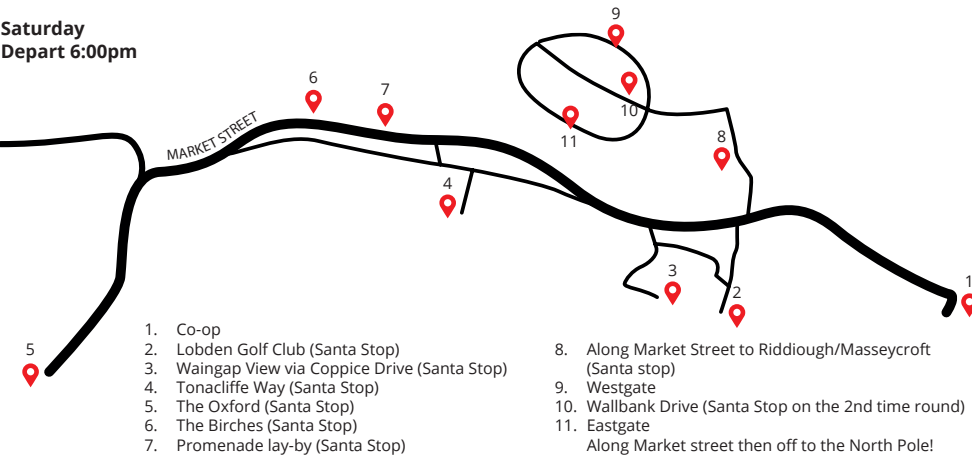
Residents are encouraged to come out and meet Father Christmas at one of our designated Santa Stops (watch out for the signs) where children will be able to collect a bag of sweets as a Christmas treat. If our safety elves allow, Father Christmas may be able to make additional short stops along the route.

Father Christmas wants to see everyone out and waving this year, joining in the festivities. He would love to see everyone's Christmas Lights and decorations cheering up the Valley.

Anyone wanting to request a mention from Father Christmas then please email whitworthtlc@gmail.com stating which Santa Stop you will be waiting at.

Finally, please send Father Christmas any photos or videos of the event to whitworthtlc@gmail.com or post them on social media with the hashtag #whitworthsantaexpress

Saturday Depart 6:00pm



Sunday Depart 6:00pm



MITCHELL'S MOTOR SERVICES HALFWAY GARAGE

MOT preparation, presentation & repair
Pick up delivery service available
(by appointment)
Diagnostics, supported by the latest
'Snap On' software
Servicing / Repairs



cars, vans, 4x4's
all makes, all models
no job too large or small

01706 854300 • 07977 458646
721 Market Street, Facit, Whitworth, OL12 8LD

CROWTHER
optometrists

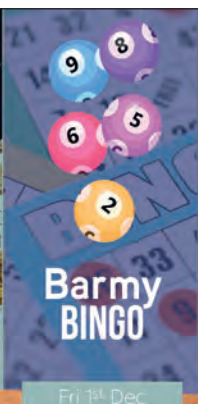
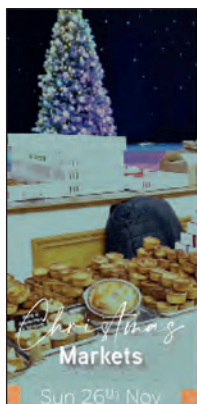
OUR SERVICE IS AS UNIQUE AS YOUR EYES



For a friendly and professional
service from an Independent
Optometry Practice
established for over 50 years.

LOOK NO FURTHER

33/35 Market Street, Bacup, Lancs., OL13 0AJ
Tel: 01706 874631



Celebrate Christmas with us

❄️ ROOM HIRE AVAILABLE FOR XMAS PARTIES ❄️



SCAN ME
for full details & to book



THE ASHCROFT
EVENTS | WEDDINGS | CELEBRATIONS

☎ 01706 854130

✉ team@the-ashcroft.co.uk

📍 The Ashcroft, Whitworth, Civic Hall OL12 8DP

WOMEN OF WHITWORTH CELEBRATE 5 YEARS OF HELPING THE COMMUNITY

In September, organisers Kimberley Ashworth and Naomi Burke celebrated five years of honouring local women and raising funds for local causes when they held the Women of Whitworth Project Rose Awards. The winners of these awards were:



Dr Jessica Ormerod – Lifetime Achievement Award for over 25 years’ service to the medical profession.

Kath Proctor and Angela Forster – People’s Choice Award for providing a carers support group through Stronger Together.

Helen Kowal – Children & Young People Award for volunteering for 27 years as a guide leader for the Rossendale girl guiding division and supporting young girls.

Imogen Webster – Sport Award for competing internationally representing Valley Thai Boxing Club.

Aimée Walker – Business and Enterprise Award for being an unsung hero during Covid with her son’s “caterpillar trail” as well as being a local business owner of Alfie’s Wardrobe.

Whitworth In Bloom – Care in the Community Award for continually maintaining all communal areas in the community and ensuring that litter and graffiti are always kept on top of.

The Lighthouse Community Foodshare – Community Projects Award for continuing their good work and much needed provision in the community.

The Women of Whitworth Project began in 2018 to commemorate 100 years of Women’s Voting Rights. They wanted to acknowledge the outstanding work of females in the community that go above and beyond.

WHITWORTH & DISTRICT U3A

Membership of the u3a is made up of retired and semi-retired people from the Whitworth area who wish to continue learning, make new friends and have fun. Monthly meetings are held at Hallfold United Reformed Church Hall Whitworth. They are held on the first Wednesday of the month from 1.15 pm for refreshments and notices, followed by a monthly speaker.

On Wednesday 6th December we will be holding our annual Christmas meeting with lots of entertainment. In the New Year on Wednesday 3rd January, John Alker (Manchester Blue Badge Guide) will be speaking on LS Lowry’s Manchester. On Wednesday 7th February, Brian Topping will be speaking on ‘Tales of a retired customs officer part 2 – Mules and More’.

We have 17 interest groups currently. For insurance purposes only members can join interest groups. You can contact the group leaders for information on dates, times and venues for group activities. Lynne, our Groups Coordinator can be contacted on 07718913131.

New members are welcome for an annual membership of £15 and £2 monthly meeting subs. A full list of speakers, interest groups and contact details can be found on [FB/u3asites.org.uk/whitworth](https://fb.u3asites.org.uk/whitworth).

ROSSENDALE METHODIST CHURCH IN SHAWFORTH

SUNDAYS	10.30am	Sunday Service (stay for a brew afterwards). All welcome
MONDAYS	9.30am - 11.15am	Toddler Group
TUESDAYS	7pm - 9pm	Whitworth Community Choir rehearsal
THURSDAYS	8pm	Model Flying Club (last Thursday in the month)
FRIDAYS	10.30am - 12pm	Community Drop In - tea/coffee/toast and a natter. All welcome

Christmas Fair 25th Nov

Superintendent Minister Revd. David J Burrow - Tel 01706 602882
For room hire (children's parties, meetings etc. wi-fi available)
contact 01706 852815 or 07799 304 405

ST JOHN'S, FACIT & ST BARTHOLOMEW'S, WHITWORTH CHRISTMAS SERVICES & EVENTS 2023

Saturday 9th December	'Carols at the Co-op', 10.30am outside Whitworth Co op Come and have a sing. There will be a collection for Springhill Hospice.
Sunday 17th December	Carol Service at St Bart's, 3pm in church Led by Revd Janet O'Neill.
Christmas Eve	Holy Communion – St John's at 9.15am St Bart's at 11am Services led by Archdeacon Dr Rachel Mann 'Pop Up Nativity' at St John's at 4pm Led by Revd Janet O'Neill. Bring the children for some fun. Midnight Communion at St John's at 11.30pm Led by Revd James Read

NO SERVICES CHRISTMAS DAY

New Years Eve	Holy Communion – St John's at 9.15am St Bart's at 11am Services led by Archdeacon Dr Rachel Mann
----------------------	--

Contact Revd Janet O'Neill for further details, on 01706 878 954

ST BARTHOLOMEW'S WHITWORTH - CHRISTMAS 2023

On Saturday 2nd December St. Bartholomew's will be hosting a Christmas Fair at Whitworth Day Care Centre (Sunnybank Community Hub) from 11.00am until 2.00pm. Stalls and refreshments of turkey soup and hot roast turkey sandwiches along with a luxury Christmas Hamper Raffle!

On the following Monday, 4th December, starting at 8.00pm, the Church will be holding their annual Christmas Quiz at the Band Club. This really is a fun Quiz with the accent on fun; nothing too serious!

The week before Christmas, on Sunday 17th December, at 3.00pm the Church will be hosting a Service of Christmas Carols and Lessons. Come along and enjoy a good sing followed by a mince pie and a tea or coffee.





Barley View

Specialist Dementia Care Home

Overlooking the Rossendale Valley, our Willow Lane community provides a safe, secure and responsive environment for the effective care of people living with dementia. With relaxing décor, bespoke features and dedicated staff - we have created a community where our residents can feel at home, not in a home.

Our home offers:

- ✓ Purpose-built Dementia care setting
- ✓ 14 en-suite rooms
- ✓ Nurse call sensors
- ✓ Light assisted guidance
- ✓ Dedicated activities co-ordinator
- ✓ Communal areas
- ✓ Outside space & garden
- ✓ Higher staff ratios
- ✓ In-house cooks

01706 659 917
enquiries@whitworthcare.org.uk



9.8 out of 10



carehome.co.uk



whitworth care

HOUSEWORX



Washing and ironing

Dry cleaning

Alterations and repairs

COLLECTION AND DELIVERY AVAILABLE

01706 854379

Commercial and
domestic cleaning

07908 242 294

539 Market Street, Whitworth
OL12 8QW



JJS ELECTRICAL CONTRACTORS

RESIDENTIAL & COMMERCIAL & INDUSTRIAL

All works undertaken fully guaranteed !
 Full installation & testing of EV charge points.

Contact us on 01706 872 728 or email
mail@jjslectricalcontractors.co.uk to get a
 free no obligation quote

www.jjslectricalcontractors.co.uk



APPROVED
CONTRACTOR



TRUSTMARK
Government Endorsed Quality



SafeContractor
Approved



Approved Installer

WHITWORTH VALE AND HEALEY BAND CLUB

More good news for the club on the CAMRA front; the club has been voted "Club of the Year" for The West Pennine Area. This takes the club into the last 16 nationally reflecting on both the quality and variety of beer served and on the club's community involvement. The CAMRA finalists will be announced in a couple of months' time, so fingers crossed.

The Club had a busy Rushbearing in September. An afternoon and evening of music and folk dancing followed the procession of the Rushcart. The club staff and committee are looking forward to welcoming visitors on Remembrance Sunday when our local Northwest Area and National Champions Band will be playing. The club will be closed following Remembrance Sunday, for about a week, as the bar is being refurbished.

The club's Twitter, Facebook, and webpages provide updates on events and current beers on tap, including any one-off changes to opening times for live sports on TV, both SKY and BT being available. Remember the club generally opens at 7pm, but at 1pm on Sundays, 5pm on Fridays and 3pm on Saturdays.

WHITWORTH VALE AND HEALEY BRASS BAND

Whitworth Vale and Healey Band are pleased to announce that they have been crowned the 2nd Section National Champions of Great Britain at Cheltenham. On Sunday 17th September, under the baton of MD Michael Golding, the band performed Lakeland Variations by Philip Sparke and impressed all three adjudicators. The adjudicators also noted the standout contribution of our euphonium 'Best Instrumentalist' Ian Peters, a hugely experienced performer who has now added this National title to his two previous awards won with the Fairey Band at the Royal Albert Hall in 1986 and 1993.

It proved to be a very long day, waiting until after 11pm for the results to be announced, but it was certainly a worthwhile wait with the audience hearing the band cheer from outside the arena area!! The trophy is now proudly displayed in the bar of the Band Club alongside the trophy received for our victory at Bolsover Entertainment contest on Saturday 30th September, making it four consecutive Bolsover victories at this contest, with a first prize of £300. The band opened with 'Kongolela', followed by yet another 'Best Soloist' prize winning performance from euphonium player Ian Peters on 'Glorious Ventures'. 'Love Unknown' by John Ireland followed this with Rachel Dyson playing the solo, before closing the programme with Shostakovich's 'Festive Overture'.

All in all, it has been a fantastic month of banding success in Whitworth and the band are now looking forward to the challenge of playing in the first section in the new year. The band would like to thank everyone who attended the recent concert at The Ashcroft. It was brilliantly supported and raised £2,500 for our academy and youth sections of the band.

Future concerts include:

- Sun 26th Nov - 2pm - St. Paul's CE Church, Ramsbottom
- Fri 8th Dec - 7.30pm - Parkinson's Society, Rochdale Golf Club
- Sun 10th Dec - 3pm - Cancer Research concert, The Ashcroft.
- Mon 11th Dec - 7pm - Community Carol Service, The Ashcroft



All the usual street carolling will be happening throughout December in Whitworth and Shawforth. Please watch out on the local social media pages for where we will be appearing.

Dates for the New Year:

- Whitworth Veterans' Band Concert - Sunday 11th February - 3pm - The Ashcroft
- NW Regional Championships - Winter Gardens, Blackpool - All day - Sunday 25th February.

For further information regarding the bands or bookings please ring Michael Whitby on 852613 or call into the band club between 6 - 8.30pm on a Wednesday (Youth band night).

DUCK RACE

Whitworth's Annual New Year's Day Duck Race has become an egg-citing success and a popular event in the Whitworth calendar. The ducks take to the water at Cowm Reservoir, Tong Lane on New Year's Day at 1pm.

For those unfamiliar with the concept, numbered ducks sponsored for a pound are entered into the Duck Race. The prize money has been increased this year so get your ducks sponsored now. Cash prizes for first, second and third place ducks are now £150, £125 and £100. Even the last duck wins £25!

You will find sponsor sheets in many of our local shops and businesses or you can purchase online via http://www.whitworth.gov.uk/events/Annual_New_Years_Day_Duck_Race. Race Results will be announced at the end of the race and the winners will be contacted to arrange distribution of prizes.



Bubbles and Brews will be joining us again this year offering breakfast butties and delicious hot drinks, available between 11am – 3pm. All proceeds from the duck race are ploughed back into the tourism and leisure events for Whitworth.

UKULELE - IT'S NOT ALL GEORGE FORMBY!

Did you know Whitworth has its very own **Ukulele Band**? Well, you do now! This much maligned little instrument is growing in popularity and is certainly making its mark in Whitworth.

One of the clubs under the auspices of Whitworth U3A - **Uke3A** started in September 2022. 12 months on, **Uke3A** has outgrown its original kitchen venue and now meets on a Monday evening at Riddiough Court. Many of the original members were complete beginners but are now confidently passing on their amazing skills to new players as they join up.



Do they perform? Of course! From their tentative debut performance at the U3A Christmas Meet, **Uke3A** has gone on to perform at local care homes, hospices, societies and shared the stage with Rochdale Festival Choir. The highlight of the year was being invited to perform at the 2023 Summer Strum Ukulele Festival in Rainford.

So long as it has a good tune, **Uke3A** gives it a go. The main motivation is having fun - and **Uke3A** laugh A LOT! - while developing some skills along the way. Other instruments are also welcomed.

Interested in **Uke3A**? Email Deborah: debwhitham@googlemail.com

Interested in U3A? Visit the Whitworth U3A website <https://u3asites.org.uk/whitworth/home>

WHITWORTH LEISURE CENTRE

Many of you will have been wondering what is going on with **WHITWORTH LEISURE CENTRE**. Here's what's happened since Rossendale Borough Council decided to close it.



June 1 and following days – public meeting called by Whitworth Town Council (WTC) – 200+ attended – an impassioned evening. Following this, a self-selecting group formed to see if it might be possible/sensible to keep WLC open. Facebook page opened, attracting 2400+ followers

June 28 – RBC's meeting at Futures Park confirms closure will go ahead on July 21, but leaves open the possibility that a community group might be formed to propose a rescue.

July 3 – informal meeting of group with WTC and Leader and CEO of Borough Council – they'd be prepared to consider proposals, but with no commitment. Members of group looking at government's Community Ownership Fund (COF) as possible major funding source

July 8 and following days – Nearly 200 Whitworth people attend meeting at the Ashcroft, with many signing up to volunteer their services. Following this, volunteers with managerial, legal, HR, construction and engineering backgrounds form Whitworth Leisure Centre Community Interest Company (WLC CIC) – a must for pursuing COF full application.

RBC state they will only transfer WLC to the Town Council, not to a newly-formed CIC. They close the building on **July 21** and board it up. Rossendale Leisure Trust are caretakers till August 31. From that point an RBC Manager takes over.

Summer/September – CIC send formal Expression of Interest sent to COF. CIC start to formulate full application to COF for funds, but can only complete this once there is a formal handover process agreed between RBC, WTC and CIC. Also, the application can be submitted only within a certain "window".

RBC have allowed weekly accompanied CIC access to the building so that local builders and CIC leaders can assess need and begin planning.

October – RBC have now drawn up the legal documents to transfer the Leisure Centre for a nominal sum, to Whitworth Town Council. The CIC will then, with the full agreement of WTC, be able to start the refurbishments, with the gym first in line (because it will generate an income stream quickly), the aim being to open part of the Leisure Centre as soon as possible.

If all that has happened without any major snags (legal or in terms of the building), the CIC will begin interviewing and taking on a small number of staff members. Meanwhile, the COF application will go ahead as quickly as it can (though obviously the outcome is not guaranteed). We'll also be seeking other funding, from smaller grants and from donations. And it will not be long now before those who volunteered their services/time/expertise, on July 8 and since, will be contacted to draw up plans for who is committing to doing what when. If you haven't volunteered already but would like to, please email whitworthleisurecentre2023@outlook.com

This whole project cannot happen without the passion of June 1 and the goodwill of July 8 being backed up by Whitworth people, lots of us, rallying round with action. If we want our Baths **WE** have to make it happen. And then, to quote Craig Brierley, who spoke so forcefully at the public meeting in the Ashcroft, and then started the group that has now become the CIC, it's **USE IT OR LOSE IT.**

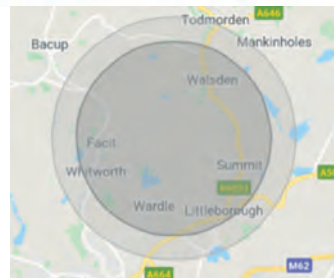
CROOK HILL COMMUNITY BENEFIT FUND



Is your community group within the inner or outer circle below?

Did you know that you could apply for a grant of between £250 and £10,000 from the Crook Hill Community Benefit Fund each year?

Applications are considered annually and will close on 7th February 2024, with decisions being announced by late April 2024. The fund is open to any community project which is for the benefit of residents of the local area and can provide both capital and revenue funding. Eligible organisations include voluntary and community groups, charities, schools and educational establishments and social enterprises and community interest companies.



For more information, please go to the Grantscape website.

HADES HILL

Sometimes a Whitworth tradition can pass you by. On the evening of September 7, 142 runners gathered in the Square to set out on the 38th edition of the Hades Hill Fell Race, 8km of running (and 360m of elevation) over Brown Wardle, then Middle Hill and up to the turning point on Hades.

Rob James of Royton won the race in a time of 32.26. Martha Tibbot of Saddleworth was first woman home (and 3rd overall) in 35.48.

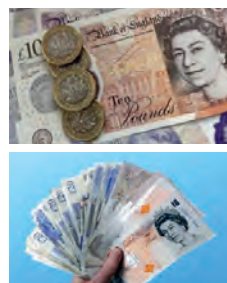
The event was invented by Joe Salt, of Whitworth, in 1978. Joe went on to become Chairman of Rochdale Harriers, who have continued to organise the race to this day. It's always on the first Thursday in September, and if you fancy running it next year there will be an award for the first Whitworth runner home.

If you feel you need to build up to the event, you could do worse than sign on with Rochdale Harriers – see helpful website for details.

WHITWORTH COMMUNITY PARTNERSHIPS

Are you a constituted community group in need of a small grant (up to £150)? Then please apply for a grant from the Whitworth Community Partnership. The WCP can give out grants that help to provide added value to residents and benefit the wider community. All applications are considered by a grants panel of 3 Rossendale Borough Council members and an observer from the community/voluntary sector.

Grants can only be given to local constituted community, voluntary and not for profit groups which are of an abundance in Whitworth so please apply if you are eligible! The maximum grant available is £150 and groups can only apply once per financial year.



For more information or to request an application form, please contact either Steph Thornton on 01706 252404 or stephaniethornton@rossendalebc.gov.uk or Jackie Flynn on 01706 252532 or jackieflynn@rossendalebc.gov.uk



Plumbing & Heating Services

Professional, Reliable, Affordable

- For all heating systems
- Installation
- Service
- Repairs



Mobile: 07515 100 161

Tel: 01706 653 581

Email: brad@bowerheatingservices.co.uk



Ashworth Energy
Energy Assessments

ENERGY EFFICIENCY



Does your business want to save £££ this year?

We now broker Gas, Electric, Water, phone and Data Supplies.

This is a **FREE** service no matter how big or small your business is

Call now

07581587990

ROSSENDALE LAW SOLICITORS

1011 Salford Road, Salford, Greater Manchester M6 7JH
Tel: 01706 654167 - 0800 0000000



If you have any legal queries, please do not hesitate to call us on 01706 854167. We are aiming to do most appointments by telephone or video conference in order to minimise the risks relating to Covid.

We have received a high number of enquiries regarding Power Of Attorneys recently. Our fees are £225 plus VAT and the registration fee of £81. Please note that we can only undertake such applications for clients who have mental capacity. Once the capacity has gone, we are unable to do such applications and a Court of Protection application is necessary instead which is significantly more expensive.



Facit Garden Centre



Christmas Trees
... get a **real** tree this Christmas

Plus Holly
Wreaths
Sale starts
Nov 24th!



Open 7 days a week

Off Grange Road, Facit, Whitworth

THEFT OF LIFE-SAVING EQUIPMENT!

A lowlife has been caught on camera stealing a defibrillator from outside The Ashcroft in Whitworth. This happened at 22.30 on Monday 4th September.

The unit is provided to help 24/7 in the event of a Cardiac Arrest in the area.

Thanks to a SELFISH individual, this is now no longer available, thereby putting others' lives at risk.

It could be YOU or YOURS who needs this equipment to save a life! If you know anything of this, please contact the Police on 101 quoting Crime Ref No. 04/150824/23.

Let's get this unit back where it belongs and the perpetrator apprehended! This could be your life they have put at risk!



FRIENDS OF WHITWORTH LIBRARY

Do you know someone in Whitworth who can't get to the library and is missing their books?

The Whitworth Library team can bring the library home to them with the fabulous, free Home Library Service. Marian loves getting her books delivered from Whitworth Library each month; she said, 'It's a real lifeline for me. I love reading, so getting the books delivered to my home is wonderful!'

Joining is easy and there are talking books and large print editions available too. For more information, Email the friendly librarians at whitworth.library@lancashire.gov.uk or pop in and ask.



CHRISTMAS SPECIALS AT WHITWORTH LIBRARY

Get in the festive spirit at the library – with lots of Christmas goodies for everyone to enjoy!

Shared Reading Christmas Special - Thursday 14 December, 10 - 11.30am

Get festive with our seasonal shared reading group. Join us to get cosy and listen to some cracking Christmas stories, whilst enjoying a nice warm cuppa, wonderful company, and tasty mince pies.

Bounce & Rhyme Christmas Special - Friday 15 December, 10.15 - 11am

Dig out those Christmas jumpers and bring your little ones along to our fab, festive Bounce & Rhyme Special. The library (and staff) will be dressed up for Christmas. Join us to sing seasonal songs, open some Christmas crackers and have lots of festive fun.

Ukelele Christmas Concert - Friday 15 December, 3:45 - 4:45pm

Come along for a unique seasonal singalong with the brilliant Whitworth Ukelele Group performing festive songs, old and new.

Storytime & Craft Christmas Special - Tuesday 19 December, 2 - 3pm

Bring your pre-schoolers to our Storytime & Craft Christmas Special. Santa's little helpers will be on hand to read some cracking Christmas stories and we'll have lots of crafts to get everyone in the Christmas spirit.

RESPONSIBLE GARDENING

Out of respect for our constantly threatened environment and wildlife, the Whitty Bloomers look for alternatives to chemicals when seeking ways to keep weeds and pests at bay.

A natural weed killer that has been used effectively on paths at Cowm Park Way North and the cycle track at Britannia involves mixing a gallon of white vinegar, a cup of salt and a dash of washing up liquid. Decant the mixture into a spray bottle and apply in dry conditions. Please note, this should not be used on flower beds as it could change the balance of the soil and damage existing plants. However, as a saviour for scruffy patios and paths, it does help if used regularly.



And if those pesky slugs are feasting on your hostas, start saving eggshells! In spring, before the new shoots start to show, sprinkle the dried and crushed eggshells around the base of the plant and cover with mulch or compost. The slugs will soon know to go elsewhere.

If you have any similar tips, please share them on the Whitworthinbloom Facebook page.

WHITWORTH COMMUNITY CHOIR ARE FINALISTS!

Whitworth Community Choir have done it and have reached the finals of Lancashire Choir Of The Year! The final takes place on the 29th of November at Lancaster University, please keep everything crossed for them. There is a 'People's Choice' vote which can be found online if you Google Lancashire Choir of the year and click vote now. Your support would be hugely appreciated and will help get our little village on the map.



They will also be performing over various locations in the village over the festive period to get you feeling all things Christmassy! Who knows it may inspire you to join them in the New Year, New members are always welcome.

They rehearse every Tuesday at Shawforth Chapel from 7pm (they are a community choir and not a church choir). If you want any more info or a chat about the choir, please contact Gill Pearson on 07779 713595 or email whitworthcommunitychoir@gmail.com

CANCER RESEARCH WHITWORTH LOCAL COMMITTEE

The committee have been very busy since the last edition. A golf tournament held at Lobden in September raised £850 and the Ladies Afternoon Tea raised £663. Thanks to the club for hosting both events and to Ruth from Seasons for her flower arranging display. A meal at the Rose and Bowl raised £1,010, a fantastic turn out and financial result. Thanks again to Christine and Gordon from Lords Caterers, and Carol and John from the Rose and Bowl for their generosity and another fantastic meal. Thanks to all who supported these events, donated raffle prizes and to Arnold and Michael for their organising these events.

The final event of the year will be the Annual Carol and Band Concert with Whitworth Vale and Healey Band on Sunday 10th December at the Ashcroft at 3pm. Tickets are £8 from numbers below. The committee would like to wish you all a Merry Christmas and Happy New year and thank you for your support. If you would like to attend any event, donate or even join the committee, please contact Michael Whitby on 852613, Elaine Bagshaw on 853935 or Arnold Ashworth on 343424.

OF COURSE IT'S THE WVN CROSSWORD OR TWO!

CRYPTIC CLUES

if new to this, or struggling, start with 15 across (hidden word),
or 3 across or 14 across (both anagrams)

ACROSS

- 1 From Gambia to Zambia, a useful street map (4)
- 3 Go film an awkward bird (8)
- 8 Miller goes north into wooded valley (4)
- 9 Southern horse wears out – reckons he's still the star (8)
- 11 Delayallows mother to get round speaker – me! (10)
- 14 People confuse lan...not! (6)
- 15 Sadness in professor rowing (6)
- 17 Turn, turn – O I love turning (10)
- 20 R.I.R.O. Data needs correcting. Are you getting warm? (8)
- 21 Little girl and little boy punch digits (4)
- 22 Two wides, and a third bungled! Get out! (8)
- 23 Bitter top detectives (4)

DOWN

- 1 Sh posh garment folded weirdly – that causes a row (8)
- 2 Value too highly how quick the cricket is? (8, or 4,4)
- 5 Drops, like the s in more dithery (6)
- 6 Ice-cream meets Beethoven? Great work (6,4)
- 6 Want a ramshackle garden? (4)
- 7 Saint supports Harold Wilson's greatest innovation... Get rid! (4)
- 10 OK, spread around a road to hospital unit (10)
- 12 I am squashed by taxi reversing in downpour: genius! (8)
- 13 Left 3D plonk to stew, and it got less and less (8)
- 16 Fizzy pop around the sun during an eclipse? (6)
- 18 Boast about angry words (4)
- 19 Notice object in mine entrance (4)

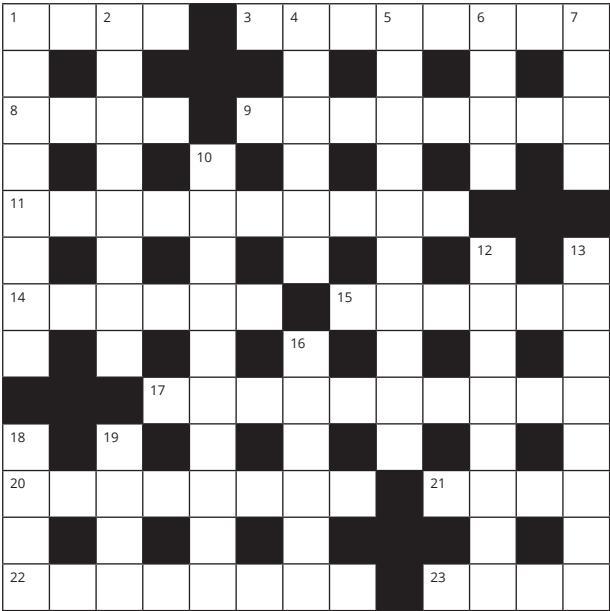
REGULAR CLUES

ACROSS

- 1 Street map (4)
- 3 Pink bird (8)
- 8 Whitworth's celebrity street cleaner (4)
- 9 Walks with annoying confidence (8)
- 11 An imposed delay (10)
- 14 Country (or people) (6)
- 15 Deep sadness (6)
- 17 Cycle (or overturning) (10)
- 20 Room heater (8)
- 21 Analogue indicator (or what you had to do on your old house phone) (4)
- 22 Get (or take) out (8)
- 23 Opposite of alkali (4)

DOWN

- 1 Way of explaining (or row) (8)
- 2 Give too much credit to (8)
- 4 Puts down (6)
- 5 Major work (of art or literature or music) (10)
- 6 Poverty (4)
- 7 Get rid of (4)
- 10 Specific part of a hospital (6,4)
- 12 Slangy word for someone academically smart (8)
- 13 Reduced (8)
- 16 Fuzzy bright bit around a dimmed light (6)
- 18 Bird (4)
- 19 Hole in side of hill, generally a mine entrance (4)



24 Day Reverse Advent Calendar



EACH DAY ADD AN ITEM TO A BOX.



THEN DONATE THE CONTENTS TO THE LIGHTHOUSE IN TIME TO BE GIVEN OUT FOR CHRISTMAS.



Donations can be taken to:

The Lighthouse Community Foodshare
551-553 Market Street, Whitworth, OL12 8QW

Open Days/Times:

Tuesday 10am - 4pm

Thursday 10am - 4pm

Saturday 10am - 3pm



07922 951 096



lighthousefoodshare@gmail.com



21 st November	22 nd November	23 rd November	24 th November
Tin of peas	Washing up Liquid	Long Life Milk	Custard
25 th November	26 th November	27 th November	28 th November
Tin of Fruit	Pack of Toilet Roll	Tin of Potatoes	Gravy
29 th November	30 th November	1 st December	2 nd December
Tin of Baked Beans	Pasta Sauce	Tin of Carrots	Chocolate
3 rd December	4 th December	5 th December	6 th December
Jar of Jam	Tin of Tuna or Meat	Shower Gel or Soap	Soup
7 th December	8 th December	9 th December	10 th December
Bottle of Squash	Tin of Tomatoes	Instant Mash	Crisps or Nuts
11 th December	12 th December	13 th December	14 th December
Biscuits	Cake	Packet of Stuffing	A Gift item

AERIALS & SATELLITE T.V.

Supplied & Fitted

Extra Points - Service Calls

**Call Neil on
07970 677 017**

FREE ESTIMATES



Whitworth Community Carol Service

Attended by the Mayor of Whitworth, Councillor Mike Royds

Monday 11th December 2023

7pm at The Ashcroft

Free entry— all welcome!

For more information

Please call

01706 852018



**Whitworth
Town Council**



**Joshua Law
Traditional Family**



Butchers...

- Cooked Meats (prepared & cooked on the premises)
- Bury Black Pudding
- Quality Steaks (matured for at least 21 days)
- Finest Sausages
- Finest English Spring Lamb
- Poultry, Bacon and Game
- Home Made Ready Meals (changed weekly)
- New Special Offers Every Week

...& Bakers

Freshly baked bread, pies and sandwich orders!

TELEPHONE ORDERS WELCOME
FREE HOME DELIVERY

Opening Hours:

Mon-Fri: 7.30am-5.30pm

Sat: 7.30am-1.30pm

Tel:

01706 852313

739 Market St., Facit, Whitworth, OL12 8LD

High Power Pressure Washing

**Path pavings cleaned
Patio cleaning
Driveways & Tarmac
Decking & Cobbles
Graffiti removal
Garden stone walls
Moss & algae removal**

**Eco-friendly chemicals used
in all cleaning procedures**



**Contact Sean on
0773 798078**

COWM RESERVOIR POLLUTION UPDATE

Chris Barron, the newly appointed catchment officer for the Upper Irwell and Roch Rivers at the Environment Agency, is playing an active role in ensuring Cowm Reservoir is cleaned up.

Chris Barron stated “I am aware of the ongoing pollution issue that is suspected to be in relation to the quarrying activities at Whitworth quarry. I am in contact with the owners of the quarry who are currently in the process of designing plans that improves their water management system across the entire site. There have been a number of meetings over the past year relating to this, with plans being submitted and feedback being given, to create the most effective plan to get this pollution stopped.”

Whitworth Town Council will receive further updates whilst this issue is progressed, and we will post any updates on our website.

Cowm Reservoir is enjoyed by all and is a particular favourite for dog walkers. Local people have expressed concern for a number of years about the ongoing pollution and subsequent lack of action to prevent this occurring. Local bird watchers have noticed a significant decline in diving birds due to the diminished water quality.

The local community are looking forward to having a clean reservoir once again, enticing the waterfowl back home.

SPRINGHILL'S DEMENTIA SERVICES

In June, Springhill Hospice was incredibly proud to launch its brand new, fantastic Dementia Garden. This was created specifically for patients with dementia, in order for them to enjoy an outside space that suits their specific needs. With sensory areas, kinetic sand, and specially selected plants to entice all the senses, the launch of the garden was a huge success; with patients and loved ones getting to make the most of the new space in the sunshine.



If you or a loved one need any more information on the dementia services Springhill offers, please visit www.springhill.org.uk/dementia - they also host Dementia Drop-in support sessions, to offer specialist guidance and advice to carers and loved ones dealing with dementia.

LIGHT UP A LIFE

Springhill Hospice understand that Christmas can be both a special and difficult time, so invite you to remember your loved one in a unique way, as part of Light up a Life. You can make a donation to the hospice in memory of your loved one, and they will commemorate a special light for them in the beautiful hospice grounds. During Springhill's Light up a Life campaign in December, the hospice trees will shine brightly with hundreds of lights, each in memory of those we love. With a donation to Light up a Life, you will receive a personalised card displaying the name of your loved one, and you will also have the opportunity to personalise a Light up a Life star that can be hung on your Christmas tree at home, or the Christmas Trees at Springhill Hospice.



All dedications will appear in our Book of Lights which will be displayed at our services and virtually on the Springhill website. For more information, please visit www.springhill.org.uk/LUAL

WHITWORTH COMMUNITY GALLERY

Whitworth Community Galleries have suffered an enforced snooze over the last few months, but one eye is open now, with exhibitions on again at the Library. The U3A got things going again there, but by now there should be photos of the Rush Cart celebrations, followed (Dec 8th) by another photographic record of a significant event in the life of Whitworth, charting the progress of the building (and demolition) work at the High School. On Jan 5th there will be artwork from Tonacliffe School – always a treat of ambition and youthful skill.

Each of those exhibitions is scheduled to move to the Ashcroft after their time at the Library. So the U3A display will be at the Ashcroft now, with the Rush Cart to follow on Dec 8th; and the High School on Jan 5th. Tonacliffe are pencilled in for Jan 26th.

The Gallery is crossing its collective fingers that it can soon go home to the Leisure Centre. Hopefully there are plenty of people out there who will not be crossing their fingers but using them – and their muscle, time and fundraising smarts – to make sure the LC does open successfully!

PS One of the Galleries is in need of a table (4x2 ft, or thereabouts) on which to mount exhibitions. If any kind reader has such a surplus table, please contact Jo on 07813 180 748 or jofurtado@hotmail.co.uk

WINTER AT THE ASHCROFT

The Ashcroft, situated in the heart of Whitworth, hosts year-round fun and family friendly community events. Their Winter calendar has some exciting events which can be enjoyed by everyone!

Visit the Ashcroft's annual Christmas Markets on Sunday 26th November. Kickstart your Christmas shopping, and explore a range of local businesses, showcasing their products and crafts. An event that will be filled with festive food, drinks & music! It's not to be missed.

Barmy Bingo returns to the Ashcroft on Friday 1st December with a Christmas special. This is bingo with a twist. Expect dancing, singalongs, and some great prizes!

If you are looking for a place to host your Christmas party, then the Ashcroft's party night on Saturday 16th December is the perfect celebration with live music and a delicious 3-course meal.

On Sunday 17th December, The Ashcroft are showing The Grinch with a special visit from Mr & Mrs Claus to give out presents to the little ones!

Say goodbye to 2023 and welcome in the New Year at their family party on 31st December with a DJ, dancing, and hot food.

To book tickets for these fun, festive events please visit www.the-ashcroft.co.uk



STRONGER TOGETHER

Stronger Together is a Whitworth venture run by two remarkably compassionate and selfless people, Kath Proctor and Angela Forster. They met at Shawforth Care, Millgate where Angela's son Mark attended and Kath was the Lead Support Carer. Unfortunately, Kath's partner Becky became very ill and required full-time care. So Kath lost a job she was dedicated to, and she watched her much-loved partner and wife of 25 years suffer painfully. However these devastating events strengthened her friendship with Angela.



In their conversations, Angela and Kath identified a real need in Whitworth for support for unpaid carers. From personal experience they know its importance. Caring for a loved one, whether they have dementia or a learning difficulty, can be emotionally and physically draining. Carers can feel isolated and their own wellbeing can falter. They decided to create somewhere for unpaid carers to get together – a place of warm smiles, food, drink and engaging conversation. This came to fruition in February 2023, when they opened at Sunnyside, funding the venture themselves, hoping and praying people would attend. They did, and Stronger Together is going from strength to strength.

They provide support and advice, promote wellbeing, and create friendships built on trust and respect. Initially aimed at unpaid carers, they've switched to an open-door policy where anyone can attend. So now, whether you are a carer, or simply elderly, lonely or in need of some advice, you are welcome. This safe space with its friendly atmosphere has translated into an amazing place that keeps on delivering.

Julie Bolton, a carers' advocate, calls into Sunnyside every two weeks. She helps anyone who needs support, with care packages, for example, ensuring people are receiving the right kind of help. Kath and Angela serve around 50 meals every Monday, doing all the catering themselves, starting 3 hours before they open up. Sample menu: sausage, mash with onion gravy, and veg; then cheese cake, fruit flan or apple crumble; with as much tea and coffee as you like. Donation boxes on every table allow people to contribute if they so choose – it's not obligatory. They hope this will cover their nominal rent and the food that is provided on the day. A special thank you to the following organisations that have donated from time to time to help Stronger Together continue this exceptional service to our community –

- Finlay Jude
- Market Street Kitchen
- Warburtons
- Whitworth Town Council
- Hollands Pies

If anyone would like to donate raffle or bingo prizes or even monetary gifts they will be gratefully received.

In October, Angela and Kath organised a day trip for 32 people, taking in a Garden Centre, then Cleveleys (chippy supper!) and Blackpool Illuminations. December 11 will be Christmas Party day, then on December 18 they will be putting on a special treat - traditional Christmas lunch, with all the trimmings. There's even a vegetarian option! No tickets required, just arrive with a smile. There may be a visit from Santa.

Everyone is very welcome to join Angela and Kath at Sunnyside, every Monday 11 to 2.

WHITWORTH MEN'S SHED

Following restructuring, the workshop of Whitworth Men's Shed has been a hive of activity adding a range of Christmas novelty items to its already extensive range of garden based wood products.



The Shed is always looking for new members, particularly those who have an interest in craft based activities but also from men who feel they would prefer to sit, enjoy a cup of tea and indulge in a chat. Over the course of the year, the Shed arranges visits to nearby museums and other places of interest and intends, in the near future, to invite guest speakers and demonstrators to come along and talk to the group.

If you, a friend or relative, feel membership of this group would be beneficial to your or their general health and wellbeing, come along and meet the team. The first three sessions are free of charge but in order to be a self sustaining organisation, the group encourages membership thereafter.

For further details, visit the Whitworth Men's Shed on any Wednesday or Friday morning between 10.00am and 12.00noon at 6 Milner Street, Whitworth OL12 8Q or visit the website <http://whitworthmenssheds.org.uk>. Alternatively, talk to Peter on 07478 134 183.

NEW HOUSING DEVELOPMENT LAUNCHES IN WHITWORTH

A new housing development has launched in Whitworth, providing affordable homes for local people. Residents have now moved into the scheme on Railway Close, off Station Road, which was developed by Westchurch Homes on behalf of local housing provider Jigsaw Homes Group.

Jigsaw Homes worked closely with Rossendale Council and Homes England to deliver the 37 homes on the site of the former Slingco factory, following the company's relocation to Rawtenstall. The development incorporates 7 two and 22 three-bedroom homes and 8 one-bedroom apartments, all for affordable rent.



It was officially opened by Jigsaw Homes Group Chief Executive Hilary Roberts, Group Director of Development Katie Marshall and Group Director of Neighbourhoods and Support Donna Kelly, alongside local councillor Janet Whitehead and Business Development Manager at Westchurch Homes, Oliver Chan.

Councillor Whitehead, who represents the residents of Facit and Shawforth, said "This is a lovely high-quality housing development. It's a beautiful environment and a lovely place for children to grow up and families to live. We have insufficient housing stock and desperately need more new housing like this for local people."

The homes benefit from private gardens, green car parking instead of tarmac spaces and electric vehicle charging points. Refuse/recycling storage is also included, and there will be a cycle lane re-opening shortly.



Live well, *your* way

Start your home care journey with
Home Instead® today.

- ♥ Home Help
- Personal Care
- 🏠 Live-in Care
- 👤 Companionship
- ♦ Dementia Care

01706 249100

rochdale@homeinstead.co.uk

Each Home Instead franchise is independently owned and operated. Copyright © Home Instead® 2021.




HELLO NEW YARIS CROSS HYBRID COMPACT SUV

**NOW AVAILABLE TO TEST
DRIVE AT RRG ROCHDALE**

RRG Rochdale Toyota
Edinburgh Way, Rochdale, OL11 2PD
Tel: 01706 863 253
rrgrochdale.toyota.co.uk

 /RRGRochdaleToyota

 @ToyotaRochdale

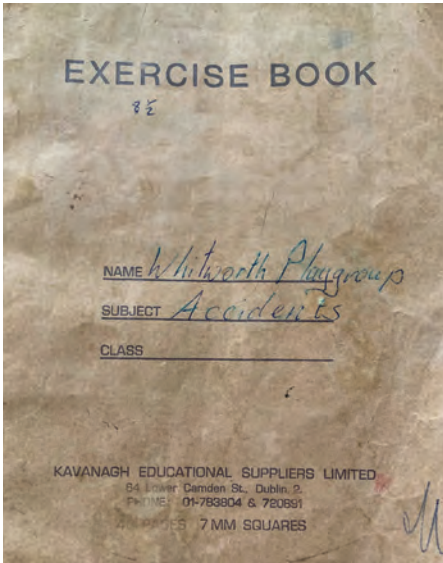


Model shown is MY23 Yaris Cross Design 1.5 VVT-i Auto PWD £26,655 including optional Metallic paint at £615. Prices correct at time of being published. Terms and conditions apply. Official fuel consumption figures in mpg (l/100km): combined 54.6 (5.2) - 62.8 (4.5). Combined CO2 117-102 g/km. Hybrid electric vehicle. Figures obtained using a combination of battery power and fuel. Figures are provided for comparability purposes; only compare fuel consumption, CO2 and/or equivalent all-electric range figures with other cars tested to the same technical procedures. These figures may not reflect real life driving results. Fuel consumption, CO2 produced, and equivalent all-electric range can vary significantly depending on a number of factors including the accessories fitted (post-registration), driving style, conditions, speed and vehicle load. All models and grades are certified according to the World Harmonised Light Vehicle Test Procedure (WLTP). All mpg and CO2 figures quoted are full WLTP figures. More information can be found by visiting: www.vehicle-certification-agency.gov.uk/fcb/wltp.asp.

WHITWORTH PLAYGROUP

While recently sorting through some old paperwork, the staff at Whitworth Playgroup found an old accident book dating from 1986. It was interesting to note how many of the children named in it have since been back as parents with their own little ones, which serves as a good reminder of the strong links they have with the families they work with and the role it has played in the community over the decades. A number of the parents have said that they enrolled their own children because of the fond memories they had of their own time at playgroup.

It also showed how first aid practices have changed over the years, with many of the reports saying that cuts and scrapes were treated with the application of Savlon and 'tender loving care.' Obviously, ointments and creams are no longer applied but the children do still receive the care even if it is not written in the reports.



Whitworth Playgroup is an Ofsted registered pre-school. If you would like more information or add your little one to the family, they can be contacted on 07538 104 812 or at whitworthplaygroup@hotmail.com.

Fill your belly at

HEALEY DELI

@HealeyDeli @healeydeli21

Afternoon Tea

Graze boxes

Cold Buffets

Hot pies / party trays

Grazing tables

Hog Roast

BBQs

Quotes given on an individual basis please contact us for more information!

We can cater for all dietary requirements.



Contact us

Tele - 07368682653

Email - hello@healeydeli.co.uk

WHITWORTH

DOUBLE GLAZING

REPAIRS

ALL FOGGED UP?

DRAFTS?

LOCKS & HANDLES

HINGES

ANY DOUBLE GLAZING

PROBLEM SOLVED

NO VAT

30 YEARS EXPERIENCE

JUST CONTACT RICHARD

07768 243081

WHITWORTH SKYLINE

Advance notice of Skyline 9, which will take place next year on Sunday May 12. It'll be a clockwise walk this time, which means trekking up Rooley Moor Road, but it also provides two options for those who don't fancy the full 14 miles – a Western Skyline terminating at Britannia (9 miles); and a Skyline Sunday Stroll, just 3 varied and delightful miles to the foot of Rooley Moor Road.

If you're interested in helping out for a few hours rather than walking, please contact Jo Furtado 07813 180 748 or jofurtado@hotmail.co.uk for details - he'll be delighted to hear from you. Ditto if you would like to walk, but only 2 or 3 miles, slowly... a vital job for you and a pal/partner is yours for the asking!

WHITWORTH MUSEUM

From time to time, photographs relating to Whitworth, sometimes just family snaps, appear on various platforms of social media. If contributors could contact Whitworth Museum and allow staff to make high resolution copies of these pictures, it would greatly assist in piecing together the history and heritage of the Valley. It is not necessary for the museum to keep the pictures, just to be able to copy them for formal archiving purposes. Where appropriate, copyright will always be acknowledged.



On display, Dinky Toy 260 issued between 1955 -1961

The archive already contains well over 8,000 photographs and images of various kinds but there is always room for more. Also of interest are audio, ciné film and video recordings. The museum has the facilities to copy and store this valuable material. Again, this material helps in the preservation of the Valley's heritage and provides a valuable research resource. If you can help, it would be greatly appreciated.

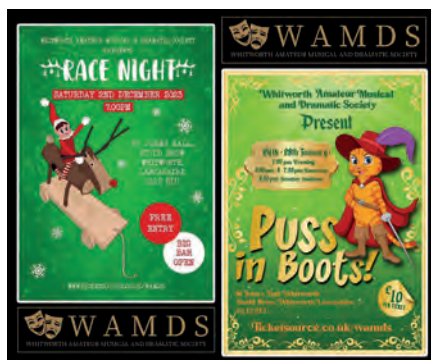
Membership of Whitworth Historical Society, operators of Whitworth Museum, is a modest £10 per year and is open to all. 100% of the income from membership goes directly towards the running of the museum.

The museum is open each Saturday from 11.00am until 4.00pm throughout the year.


WHITWORTH AMDS NEEDS YOU!

Whitworth Amateur Musical and Dramatic Society is a non profit theatre group based in Whitworth. Founded in 1963 Whitworth AMDS celebrated their 60th anniversary earlier this year. It is an organisation run by a group of volunteers and relies on the continual support of the local community to keep going and bring quality entertainment to Whitworth.

They are looking for more volunteers to come along and get involved ready to start work on their latest production, 'Puss in Boots', which is happening 24th - 28th January 2023. If you are interested in local theatre and would like to learn more about what goes on behind the scenes to make these fantastic shows happen then please contact them today at info@wamds.co.uk or over on their social media pages.



You could also go along to their next fundraiser event on Saturday 2nd December 2023. This is a family friendly Christmas Race Night. Entry to the event is free with the chance to place your bets on some very special reindeers!



**Phil Jones
Plumbing and
Heating**

**DOMESTIC AND COMMERCIAL
PLUMBING AND HEATING
REPAIRS AND
INSTALLATIONS INC LPG**

For more information please call me on
07976 886926
or email me on pjplumbingandheating@yahoo.com

**DAYTONA
DRIVING
SCHOOL**



Darren Lawler, ADI

- Local Whitworth Instructor
- Pass plus courses
- Motorway and refresher lessons



07814 566985
darrenjlawler@hotmail.co.uk
www.daytonadrivingschool.co.uk



**THE
CARPET
& FLOORING DEPOT**

**SPECIALISTS IN
DOMESTIC AND
DESIGNER FLOORS**

**CARPETS
VINYL
LAMINATES
LVT**

**Hundreds of Rolls
and Roll Ends in Stock**

- Free Local Delivery
- Free planning and measuring service
- Professional Fitting Service
- Stockists of all leading manufacturers
- Family business with over 100 years experience in the carpet trade
- Discounted prices—we will match any like for like written quote




**10 % DISCOUNT TO ALL
WHITWORTH RESIDENTS
*EXCLUDES FITTING CHARGE**

FAMILY BUSINESS, FAMILY VALUES

01706 656 466 **48 WHITEHALL ST,
ROCHDALE
OL12 8LN**

NEW RT FENCING HARDWARE STORE

RT Fencing are thrilled to announce the opening of a new hardware store complementing the existing superior fencing product on sale to support local tradespeople, the public and DIYers in Whitworth and the surrounding areas.

Stocking a much wider range of ironmongery, screws, and nails, now also on sale are timber paints, decking oils, paint brushes and other decorating tools. Alongside drill bits, silicon, and everyday DIY tools, there is an exciting new range of garden accessories such as garden and decking lights, hose pipes and digging equipment. The range of high quality and affordable products in store is far greater than before.

RT Fencing has been established in Whitworth for over 20 years, supplying fence panels, all of which are manufactured on site, concrete products, decking and timber to trade and the public. Bespoke gates and fence panels are a speciality.

Located at;

Rear of 307A Market Street
Whitworth
OL12 8PW

Opening hours are;

Monday – Thursday 7am - 4.30pm
Fridays 7am - 3pm
Saturdays 7am - 12pm



CELEBRATING 60 YEARS OF WHITWORTH VALLEY

2024 marks 60 years of Whitworth Valley Football Club and what better way to celebrate than with a celebration dinner! The dinner will be held at the Ashcroft on Saturday 18th May 2024 where you can enjoy a drinks reception, delicious 3 course dinner with wine from C&C Catering and during the meal there will be table magic performed by the amazing Darren Brand, followed by live entertainment from the fabulous Jukebox Band. There's even a photobooth for all those fun pics!

If you would like to be a part of this unforgettable celebration, exclusive sponsorship packages are still available providing a fantastic opportunity for local businesses to shine in the spotlight on the evening. Please email whitworthvalleysecretary@gmail.com for more details.

This event is sponsored by local business Bunny Boilers, for all your gas, central heating and plumbing requirements from installation and service to repair.



Whitworth Valley would welcome your photographs and stories from yester years to the present year so they can be displayed on the evening for everyone to enjoy. Let's make their 60th year celebration an evening to remember! Spread the word, invite your friends, and get ready for an evening filled with football, fun and memories.

Tickets on sale now from Vanessa Hancock 01706 853353



Whitworth Library, right at the heart of the community, where you'll always get a warm Whitworth welcome. Check out these activities at the library for everyone to enjoy. All are FREE unless stated.

Mondays

- 10:00 – 10:45 **Fitsteps** Upbeat dance exercises with Jan (£4.50)
11:00 – 11:45 **Pilates** Improve your strength, posture and balance with Jan (£7.50)
£10.00 for both above classes. Contact Jan Jenkins Fitness on 07939 087122
14:00 – 16:00 **Knit and Natter** Bring your knitting and enjoy a brew and good conversation

Tuesdays

- 10:00 – 12:30 **Scrabble Club** Great company and good fun – why not join us?
14:00 – 14:30 **Storytime and More!** Stories and themed activities (18 months - 5 years)
14:00 – 15:00 **Little Steps** featuring games, sing-alongs, stories and crafts on last Tuesday of month
15:00 – 17:00 **U3A Wellbeing** 1st Tuesday of month - 07762 757925 (Sheila) for info

Wednesdays

- 10:00 – 11:30 **Rossendale Children and Family Wellbeing Session** for children aged 0-5 yrs
12:00 – 13:30 **Meditation and Wellbeing** Contact Sheila Daly for details (07762 757925)
(suggested £5 donation)
18:00 – 19:00 **Line dancing** Contact Sheila Daly for details (07762 757925)
19:00 – 20:30 **Yoga, Pilates and Relaxation** Contact Sheila Daly for details (07762 757925)
(suggested £6 donation)

Thursdays

- 09:30 – 10:30 **Learn My Way** Get online – start your digital journey today!
10:00 – 11:30 **Shared Reading Group** All welcome!
10:00 – 12:00 **U3A Family History** on last Thursday of month. T. 07790192120 (Jean) for info
13:30 – 15:30 **U3A Art Group** 1st Thursday of month. T. 07800 820096 (Lindsay) for info
14:00 – 15:00 **U3A Creative Writing** 1st Thursday of month. T. 07903 570008 (Kay) for info
14:00 – 15:30 **U3A Flower Arranging** 3rd Thursday of month. T. 07411 520771 (Nina) for info

Fridays

- 10:15 – 11:00 **Baby Bounce and Rhyme** (birth to 3 yrs.)

Saturdays

- 10:30 – 12:30 **Lego Club** (for all ages)
10:30 – 11:30 **Garden Gang** (for children of all ages)

... and newspapers and books, including audio and large print. There's information on a whole host of topics. The library also offers the warm welcome scheme to help with the cost of living. Drop in for a cuppa and a welcome from the friendly library team. You can brush up your digital skills on the public computers, with free Wi-Fi and also print and photocopy too.

If you, a relative, or someone you care for, can't get to the library, the team can bring the library home to you, via the Home Library Service. Get in touch by calling 0300 123 6703 and ask to be put through to Whitworth Library, or email: whitworth.library@lancashire.gov.uk

Follow the library or the Friends of Whitworth Library Group Facebook page, for news about events. You can also contact friendsofwhitworthlibrarygroup@gmail.com to be added to the mailing list.

BunnyBoilers
Gas | Central Heating | Plumbing

Installation,
Service & Repair

All types of work undertaken



Call for a
free
quotation!

Michael Bunnell | 07792 635826

The Window And Door NEW YEAR
Outlet NEW LOOK

Great Products... Great Prices...



10 YEARS
GUARANTEE &
INSURANCE
BACKED FOR
PIECE OF MIND



YOUR LOCAL U.P.V.C.
& ALUMINIUM
SPECIALIST

Bi-Folding Doors | Sliding Doors
Conservatories | Composite Doors
Windows | Glass Balustrades | Porches

The Window & Door Outlet
Unit 8, Daniel Street,
Whitworth, Rossendale, OL12 8BX

sales@twado.co.uk

www.twado.co.uk

0%
FINANCE
OPTIONAL
FREE
CONSULTATION

01706 436444

FOLLOW
US ON



**Having a party
or a get-together?**

We have a wide range of menus available
(including our famous potato pie!)
for collection, delivery or with service

Official caterer on the East Lancs steam
train, Bury: 'Dining with Distinction'



FAST AND RELIABLE SERVICE

Call us now for a quote!

01706 853251

www.lordscaterers.co.uk

2 Spring Bank, Mills Street, Whitworth, OL12 8QP
(directly behind former premises)



A. J. Nuttall Ltd., Pharmacy

Mr A.J. Nuttall BSc (Hons), MRPharmS



- Confidential computerised records
- Repeat prescriptions
- Ostomy and Surgical Products
- Sports Injuries

So the next time you're unwell...
ask your pharmacist!
You'll be taking good advice.

Tel: 01706 853284

603 Market Street, Whitworth (opp Medical Centre)
Mon - Fri 8.30am - 6.30pm (closed for lunch 12.30 - 1.30pm)

LOCAL TRADES LIST



GILL CHORLTON

Ofsted Registered Childminder

Level 3 qualified, dedicated playroom and garden,
Local Authority funding accepted

Full and part time places,
Tel: 07962 190 667, follow on Facebook

HEALEY DELL HERITAGE CENTRE AND TEAROOMS

Fully Licensed tearoom and free venue hire
Open Thursday to Sunday from 10am to 5pm
Dell Road, Rochdale
Bookings and enquiries 01706 350 459
hello@healeydelheritagecentre.co.uk
www.healeydelltearooms.co.uk

CJ ROTHWELL LANDSCAPING AND DRAINAGE

cjrothwell@hotmail.com
Tel: 07846 107 922
39 Rawstron Street, Whitworth

RLH GAS & PROPERTY SERVICES

Richard Lyon-Hayes - Gas Engineer
Servicing, installation & repairs, kitchen & bathroom
Tel: 07970 470 019 www.rlhas.co.uk
rlhasandpropertyservices@yahoo.co.uk
GAS Safe registered 531279
33 Oak Street, Shawforth

SEAN BRADLEY

High power pressure washing paths & patio cleaning driveways
& tarmacking, decking & cobbles, graffiti removal, garden
stone walls, moss & algae removal, plus window cleaning
Tel: 01706 879 928 / 07773 798 078
Seanbrad09@gmail.com
28 Douglas Road, Bacup

ANDREW ROBINSON

Painting and Decorating

Tel: 01706 63979 / 07967 203 484
4 Meadow Head Avenue, Whitworth

PETER RICHARDSON

Painter and Decorator

Tel: 01706 854 729 / 07957 758 928
Over 30 years' experience, no job too small
9 Heatherlands, Whitworth

**List your business for
£5.83 + VAT per edition!**

**01706 852018
info@whitworth.gov.uk**

This community magazine is produced by Whitworth
Town Council. It is distributed to 3,900 properties in
Whitworth four times a year.

Editorial content is carried free of charge; advertising
rates can be provided upon request.

Whitworth Town Council cannot be held responsible for
the accuracy of any information provided for submission
by outside organisations, the quality of service offered by
advertisers, or the content of adverts within the magazine.

PHIL JONES

Plumbing and Heating

LPG (Gas Safe REG)
Tel: 07976 886 926
pjplumbingandheating@yahoo.com
4 The Hedgerows, Whitworth

OPENREACH Window & UPVC Cleaning

Carpet & Upholstery Cleaning Jet Washing
Tel: 0800 617 679
openreach-wcs@tiscali.co.uk
www.openreach-wcs.co.uk
35 Westgate, Whitworth

MILCARE

516 Market Street, Whitworth, OL12 8JT
For all your care support needs and benefits assessments
Tel: 01706 482002 www.milcare.co.uk

ETERNAL CEREMONIES - Tina Hall

Celebrate, creating unique and bespoke ceremonies to
celebrate all those special occasions.
Namings, Weddings and Funerals.
FB page - ETERNAL CEREMONIES
Tel: 07834 924 626
tinaann.hall@yahoo.com

MACLEOD PODIATRY

Bsc (Hons) qualified HCPC registered and
fully insured podiatry service
Available for home visits or clinic appointments
Tel: 07728 723657 macleodpodiatry@hotmail.com
(within the pharmacy AJ Nuttall, 603 Market St, Whitworth)

CHARLIE PRICE GARDENING SERVICES

Covering all area of landscaping - fencing, decking, gates,
turfing, shed bases, paving, pergolas, artificial grass, hedge
cutting and garden maintenance
Tel: 07925 141783 charliedavidprice@gmail.com

CROSSWORD ANSWERS see pg 16 for the puzzle





Lancashire Constabulary

police and communities together

IT IS REALLY IMPORTANT THAT ALL CRIMES ARE REPORTED

**PC SCOTT BENTLEY IS THE DEDICATED POLICE OFFICER FOR WHITWORTH,
YOU CAN CONTACT HIM ON 2973@LANCASHIRE.POLICE.UK**

**ALTERNATIVELY CONTACT COMMUNITY PCSO 7356 HEIDI KIRKBRIGHT
07970 970878 OR 7356@LANCASHIRE.POLICE.UK**

**ADDITIONALLY YOU CAN REPORT A NON-URGENT CRIME OR INCIDENT,
PLEASE DIAL 101 OR VISIT
WWW.LANCASHIRE.POLICE.UK/CONTACT-US/HOW-DO-I-REPORT-A-CRIME**

FOR EMERGENCIES DIAL 999

**SIGN UP TO "IN THE KNOW" TO RECEIVE ALERTS AROUND CRIME PATTERNS IN WHITWORTH
STAYINTHEKNOW.CO.UK/LANCASHIRETALKING**

Lancashire County Council:

0300 123 6701 (general enquiries)
www.lancashire.gov.uk

Initial Response Service

0800 013 0707
For urgent or general mental health issues

Highways 0300 123 6780

Email highways@lancashire.gov.uk
Out of hours social care emergencies
0300 123 6720

Rossendale Borough Council:

01706 217777 (council tax, bin collections
and other services)
0300 222 5944 (revenues and benefits)
0300 22 5946 (out of hours emergencies)
www.rossendale.gov.uk

The Lighthouse Community Foodshare:

551-553 Market Street, Whitworth
Tuesday & Thursday (10am-4pm)
Sat (10am-3pm) by appointment only
lighthousefoodshare@gmail.com
07922 951 096

Together Housing:

0300 555 5556 (general enquiries)

Homestart:

01706 214621
emma@homestartrbh.co.uk
www.home-start.org.uk

Carers Link Lancashire:

01254 387444
info@carereslink.net
www.eastlancscareres.org.uk

Citizens Advice Rossendale:

Financial, welfare and benefits advice
0300 456 2552
www.carh.org.uk

The Samaritans:

01706 830999
(Freephone) 0800 116 123

Universal Credit:

(Freephone) 0800 731 9344

Lancashire Volunteer Partnership:

Befriending service for people who want
someone to talk to
www.lancsvp.org.uk
07779 972114

WHITWORTH TOWN COUNCILLORS

FACIT & SHAWFORTH WARD

Tom Aldred (Labour): 01706 852183 • atomaldred@aol.com

Louise Burton (Independent): 01706 852018 • info@whitworth.gov.uk

David Chorlton (Independent): 07939 218266 • cllr davidchorlton@whitworth.gov.uk

Kim Olaolu (Independent): 07434 034784 • cllrkimolaolu@gmail.com

Sarah Rhodes (Independent): 07891 269998 • cllrsarahrhodes@whitworth.gov.uk

Janet Whitehead (Independent): 07795 577647 • cllrjanetwhitehead@whitworth.gov.uk

HEALEY & WHITWORTH WARD

Gareth Baron (Independent): 07773 307669 • cllrbaron@gmail.com

Robbie Blezard (Community First): 07506 609226 • cllrrobbieblezard@whitworth.gov.uk

Alan Neal (Community First): 07817 414721 • alanneal@rossendalebc.gov.uk

Dayne Powell (Community First): 07557 561803 • dayne.powell@outlook.com

Mike Royds (Community First): 07811 994458 • cllrmikeroyds@whitworth.gov.uk

Michael Whitworth (Community First): 07850 910321 • cllrmikewhitworth@gmail.com

WHITWORTH TOWN COUNCIL OFFICES

The Ashcroft, Market Street Whitworth, OL12 8DP

Contact: Rachel Hodson, Town Clerk

Tel: 01706 852018 • Email: info@whitworth.gov.uk • www.whitworth.gov.uk

Office hours: Mon–Fri 9.30am–2pm

FORTHCOMING WHITWORTH TOWN COUNCIL MEETING DATES

All the following Thursdays: 30th November, 14th December and 25th January

All meetings are open to the public and
take place at 7.30pm in the Council Chamber.

See the website for details or contact the Town Clerk.

ROSSENDALE BOROUGH COUNCILLORS

FACIT & SHAWFORTH WARD

Scott Smith and Janet Whitehead

HEALEY & WHITWORTH WARD

Dayne Powell and Alan Neal

LANCASHIRE COUNTY COUNCILLOR

Councillor Scott Smith

Scott.Smith2@lancashire.gov.uk

07891 695962

MEMBER OF PARLIAMENT

Jake Berry MP

0207 210 5000 (House of Commons)

01706 215547 (Constituency office)

jake.berry.mp@parliament.uk

www.jakeberry.org